



AIP
SUPPLEMENT
(SUP)

AIP SUP 01/2026

Email: dna@aactl.gov.tl

DATE:12 JUN 2026

PRODUCTION ERRORS AIP EDITION 12

1 INTRODUCTION

1.1 This AIP SUP details corrections to the Timor-Leste AIP Edition 12.

2 BACKGROUND

2.1 Following publication of AIP Edition dated 11 June 2026 several errors have been detected.

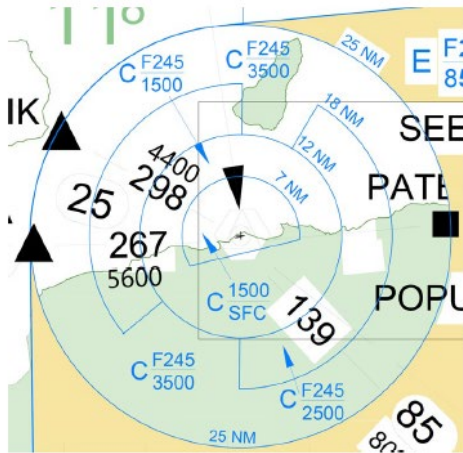
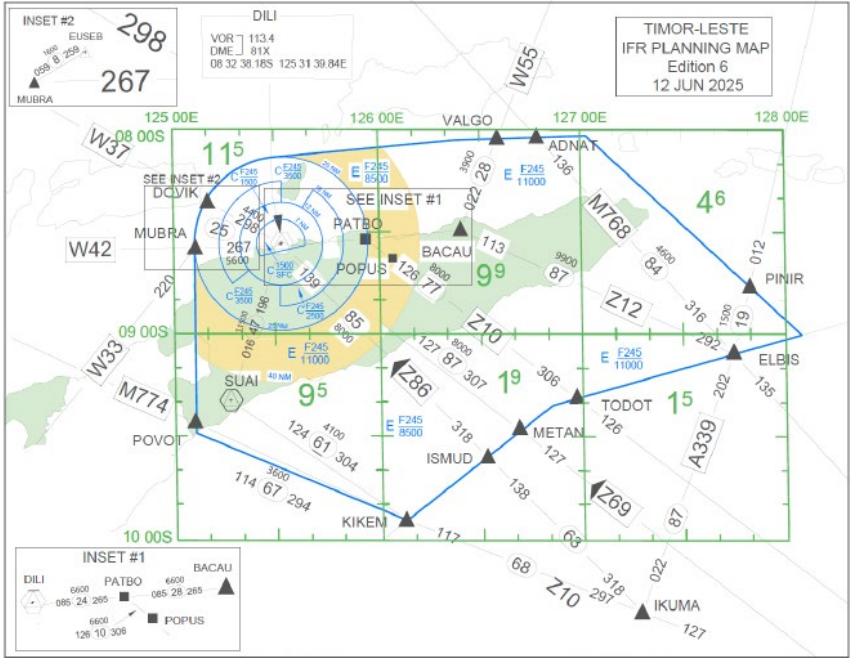
2.2 This AIP SUP details the corrections to be made in the current published AIP.

2.3 AIP Edition 13 will become effective on 06 AUG 2026 and will correct the current errors.

3 AIP EDITION 12 CORRECTIONS

3.1 Make the following amendments to AIP Edition 12.

Part	Page	Correction
1	1-7	Update AIP Amendment: NR 11 to 27 NOV 2025, NR 12 to 11 JUN 26
1	1-11	Update date to 11 JUN 26
1	1-114	Amend Planning Chart-IFR date to 12 JUN 25
1	1-114 & 1-115	Instrument Approach Chart-ICAO (Suai) amend to: VOR/DME RWY35 12 JUN 25 RNP RWY 35 12 JUN 25 SID RWY 17 DEP 27 NOV 25
2	2-12	Update date to 11 JUN 26
2	2-78	Insert amended chart as per below:



Part	Page	Correction
3	Cover Page 1	Cover Page 1 numbering is repeated. Amend second Cover page 1 (second page of AIP Part 3) to Cover Page 2
3	3-3 to 3-21	AD section starts at incorrect page no (3-3 instead of 3-1). Renumber all pages sequentially, restarting at 3-3 becoming 3-1. Continue this to page 3-21. Page numbers correct at second page numbered 3-20. Numbering from page 3-20 (second one) is correct until 3-78.
3	Page 3-78 Onwards	Page 3-78 is duplicated and causes errors in subsequent page numbering. From second Page 3-78 (WPSM-SAME data page), amend WPSM SAME Page to 3-77 and incrementally update each subsequent page number. (Note: Updated Table of Contents in this SUP indicates updated page numbering)
		All page numbering below now relates to the AIP page numbering having been updated as per the sections above.
3	Pages 3-1 to 3-18	Amend page date to 11 JUN 26

3	3-11 to 3-12	Replace AD 0.4 Checklist of AIP Timor-Leste Pages with the following table below:
---	--------------	---

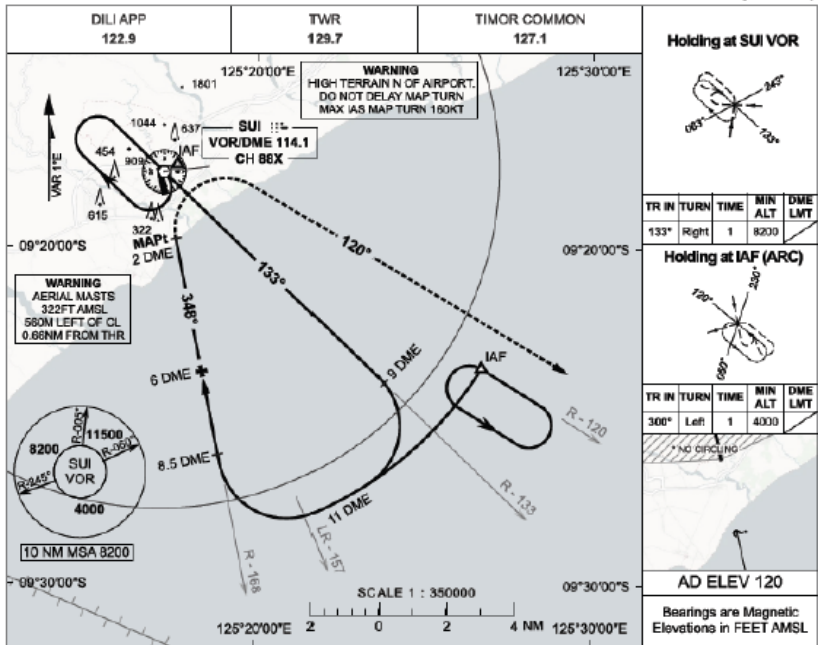
Edition No.	Page	Date
12	Cover Page 1 & 2	11 JUN 26
12	3-1 to 3-34	11 JUN 26
12	3-35	12 JUN 25
12	3-36 to 3-37	25 MAR 21
12	3-38 to 3-40	12 JUN 25
12	3-41 to 3-43	25 MAR 21
12	3-43 to 3-47	12 JUN 25
12	3-48 to 3-49	15 JUN 23
12	3-50 to 3-51	15 JAN 2004
12	3-52 to 3-53	12 NOV 15
12	3-54 to 3-55	03 NOV 22
12	3-56 to 3-57	15 JUN 23
12	3-58 to 3-59	30 NOV 23
12	3-60 to 3-61	APR 2012
12	3-62 to 3-63	12 JUN 25
12	3-64 to 3-66	25 MAR 21

12	3-67	12 JUN 25
12	3-68 to 3-69	25 MAR 21
12	3-70	12 JUN 25
12	3-71	11 JUN 26
12	3-72 to 3-74	12 JUN 25
12	3-75 to 3-76	11 JUN 26
12	3-77 to 3-78	11 JUN 26
12	3-79	12 JUN 25
12	3-80 to 3-81	25 MAR 21
12	3-82 to 3-85	12 JUN 25
12	3-86	15 JUN 23
12	3-87	01 DEC 22
12	3-88	27 NOV 25
12	3-89 to 3-90	12 JUN 2025
12	3-91	MAR 2017
12	3-92 to 3-93	12 JUN 25
12	3-94 to 3-95	25 MAR 21
12	3-96	25 MAR 21
12	3-97	11 JUN 26

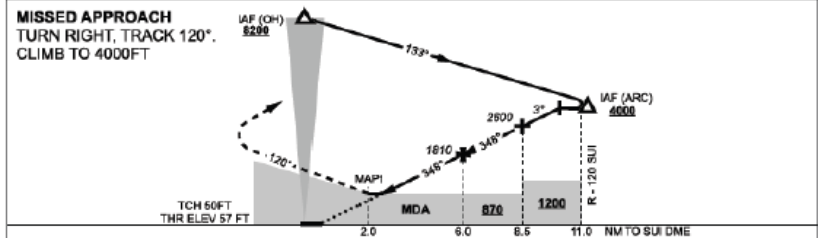
Part	Page	Correction
3	3-75 & 3-76	Amend chart date to 11 JUN 26
3	3-88	Replace RWY 17 Departures Chart with chart below:

Part	Page	Correction
3	3-89	Replace RWY 35 VOR/DME Chart with chart below:

12 JUN 2025 **USE QNH** **VOR/DME Rwy 35**
XANANA GUSMAO INTL (WPDB)



NM TO SUI DME	2.4	3	3.1	4	5	6	7	8	8.5	9
ALT (3° APCH PATH)	660	850	870	1170	1490	1810	2130	2440	2600	2760



CATEGORY	NOTES			
	A	B	C	D
S-I (2.5% MAP)	970 (913-4.9)			
S-I (4.0% MAP)	760 (703-3.7)			
CIRCLING*	880 (760-1.9)	1010 (890-2.8)	1110 (990-3.7)	NOT APPLICABLE

1. MAX IAS :
 IAF TURN : 16KLT
 2. NO CIRCLING ON RWY35 THR

Changes: MINIMA UPDATED AND EDITORIAL CHANGES

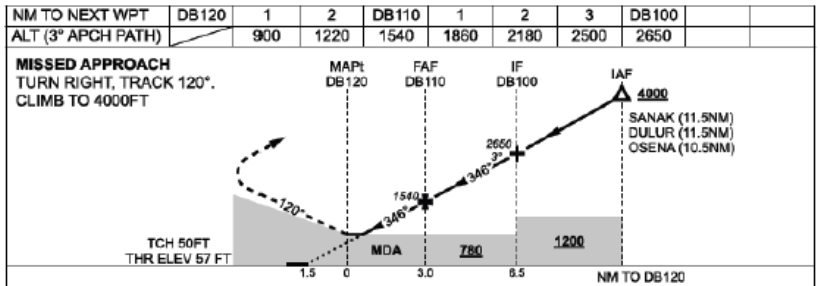
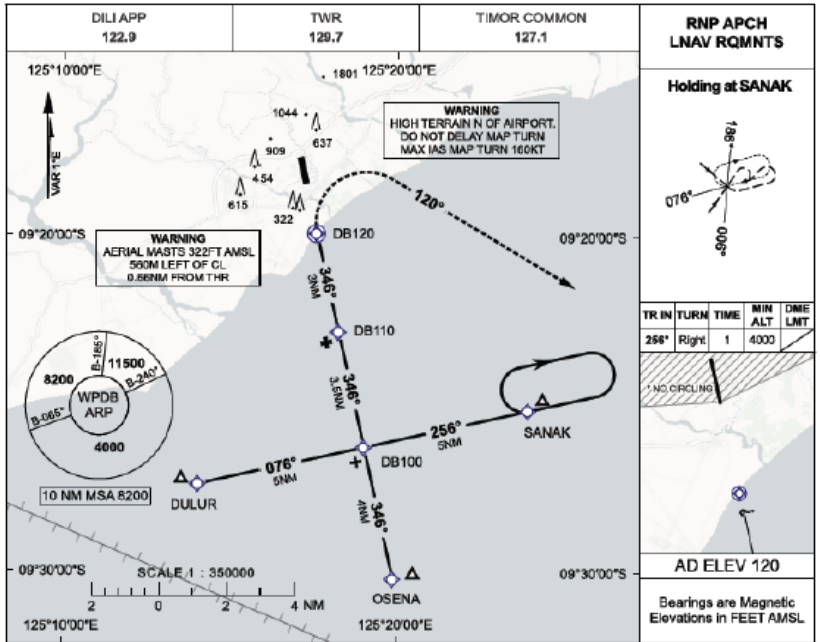


Part	Page	Correction
3	3-90	Replace RNP RWY 35 Chart with chart below:

12 JUN 2025

USE QNH

RNP RWY 35
XANANA GUSMAO INTL (WPDB)



CATEGORY	NOTES		
	A	B	C
LNAV (2.5% MAP)	880 (823-4.4)		
LNAV (4.0% MAP)	700 (643-3.3)		
CIRCLING*	880 (760-1.9)	1010 (890-2.8)	1110 (900-3.7)

NOT APPLICABLE

1. MAX IAS : 200KCT
INITIAL MAP TURN : 160KCT
2. NO CIRCLING N OF RWY35 THR

Changes: MINIMA UPDATED AND EDITORIAL CHANGES

© Civil Aviation Authority of Timor-Leste



4 EFFECTIVE DATE

The changes in this SUP become effective immediately.

5 CANCELLATION

5.1 This AIRAC SUP will self-cancel at 2608051500 when incorporated in AIP V13.

6 DISTRIBUTION

6.1 [AACTL website](#) only.