



AERONAUTICAL INFORMATION PUBLICATION TIMOR-LESTE Part 3

Edition 12

**CONSULT NOTAM AND AIP SUPPLEMENT
FOR LATEST INFORMATION**

This publication is copyright. Unless specified otherwise, you may use this publication only for information purposes. Except as permitted by the Timor-Leste Law, no part of this publication may be reproduced, stored in a retrieval system, transmitted, redistributed, republished or commercially exploited in any way without the prior written permission of AACTL.

If you wish to use any part of this publication in any way not permitted by this notice contact AACTL regarding a licence.

**Copyright © AACTL 2026
All rights reserved worldwide**

INTENTIONALLY BLANK

PART 3 – AERODROMES (AD)

AD 0

AD 0.1 PREFACE

1 NAME OF PUBLISHING AUTHORITY

- 1.1 The AIP is published under the authority of the Civil Aviation Authority of Timor-Leste (AACTL), Ministry of Transport and Communications Timor-Leste.

2 APPLICABLE ICAO DOCUMENTS

- 2.1 The AIP is prepared in accordance with the Standards and Recommended practices (SARPs) from the following ICAO Documents:
1. Annex 15 Aeronautical Information Services
 2. Annex 4 Aeronautical Charts
 3. Doc 8126 Aeronautical Information Services Manual
 4. Doc 8697 Aeronautical Chart Manual

3 AIP TIMOR-LESTE STRUCTURE

3.1 The AIP Structure

- 3.1.1 The AIP is made up of three Parts, being Part 1-General (GEN), Part 2.-Enroute (ENR) and Part 3-Aerodromes (AD). Each Part consists of sections and subsections. The AIP Structure is shown in graphic form at page 1-5.

3.2 Part 1 – General (GEN)

- 3.2.1 Part 1 consists of five sections. These sections are described below.

3.2.2 GEN 0 Preface

Preface, Record of AIP Amendments, Record of AIP SUPs, Checklist of AIP pages, List of Hand Amendments to the AIP and the table of Contents to Part 1.

3.2.3 GEN 1 National Regulations and Requirements

documents, Summary of national regulation and international agreements/conventions and differences from ICAO SARPs.

3.2.4 GEN 2 Tables and Codes

Measuring system, Aircraft markings, Holidays, Abbreviations, Chart symbols, Location indicators, List of radio navigation aids, Conversion tables, and Sunrise/sunset information.

3.2.5 GEN 3 Services

Aeronautical Information Service, Aeronautical Charts, Air Traffic Services, Communication Service, Meteorological Services and Search and Rescue Services.

3.2.6 GEN 4 Charges for Aerodromes/Heliports and Air Navigation Services

Aerodrome and helicopter charges/and Air Navigation Service charges.

3.3 Part 2 – Enroute (ENR)

3.3.1 Part 2 consists of seven sections. The sections are described below.

3.3.2 ENR 0 Preface

Record of AIP Amendments, Record of AIP SUPs Checklist of AIP pages, List of hand amendments to the AIP and the Table of contents to Part 2.

3.3.3 ENR 1 General Rules and Procedures

General rules, Visual flight rules, instrument flight rules, ATS airspace classification, holding approach and departure procedures, Radar service and procedures, Altimeter Setting procedures, regional supplementary procedures, Air traffic flow management, Flight plan messages, interception of civil aircraft, and Air traffic incidents.

3.3.4 ENR 2 Air Traffic Service Airspace

Detailed description of Timor-Leste airspace and other regulated airspace.

3.3.5 ENR 3 ATS Routes

Detailed description of lower ATS routes and helicopter routings.

3.3.6 ENR 4 Radio Navigation Aids/Systems

Radio navigation aids-enroute, Special navigation systems, Name-code designators for significant points, and Aeronautical ground lights en-route.

3.3.7 ENR 5 Navigation Warnings

Prohibited, restricted and danger areas, Military exercise and training areas and Air Defence Identification Zone (ADIZ), other activities of a dangerous nature and other potential hazards, Air navigation obstacles and bird migration areas with sensitive fauna.

3.3.8 ENR 6 En-Route Charts

En-route Charts, ICAO and index charts.

3.4 Part 3- Aerodromes (AD)

3.4.1 Part 3 consists of four sections. The sections are described below.

3.4.2 AD O Preface

Record of AIP Amendments, Record of AIP SUPs, Checklist of AIP pages, List of hand amendments to the AIP and the Table of Contents to Part 3.

3.4.3 AD 1 Aerodromes/Heliports – Introduction

Aerodrome/heliport availability, rescue and fire-fighting services, Index to aerodromes and heliports, Grouping of aerodromes and heliports and Handling services providers.

3.4.4 AD 2 Aerodromes

Detailed information on aerodromes including helicopter-landing areas, if located at the aerodromes.

3.4.5 AD 3 Heliports

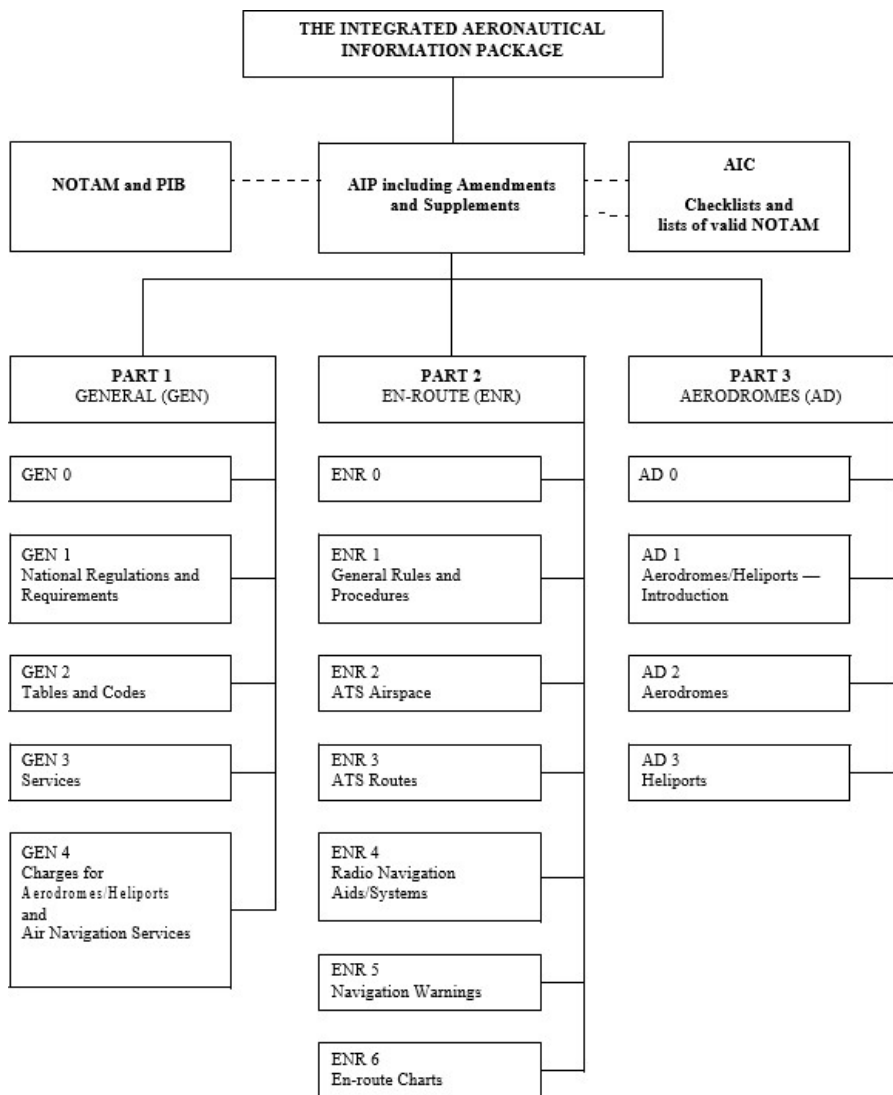
Detailed information on heliports.

4 REGULAR AMENDMENT INTERVAL

- 4.1 The Timor-Leste AIP will be amended every 12 months and will be replaced in its entirety. Interim amendments will be notified via AIC.

5 CONTACT IN CASE OF DETECTED ERRORS

- 5.1 All care has been taken to ensure that the information contained within this AIP is accurate and complete. Any errors and omissions which may be detected, as well as any correspondence concerning the Integrated Aeronautical Information Package, should be referred to AACTL, whose address is shown at GEN 1.



INTENTIONALLY BLANK

AD 0.2 RECORD OF AIP TIMOR-LESTE AMENDMENTS

AIP AMENDMENT			
NR/ Year	Publication date	Date Entered	Entered by
1	2004		
2	25 MAR 2021		
3	02 DEC 2021		
4	16 JUN 2022		
5	01 DEC 2022		
6	15 JUN 2023		
7	30 NOV 2023		
8	13 JUN 2024		
9	28 NOV 2024		
10	12 JUN 2025		
11	27 NOV 2025		
12	11 JUN 2026		
13			
14			
15			
16			
17			
18			
19			
20			

AIRAC AIP AMENDMENT			
NR/ Year	Publication date	Date Entered	Entered by
1			
2			
3			
4			
5			
6			
7			
8			
9			
10			
11			
12			
13			
14			
15			
16			
17			
18			
19			
20			

INTENTIONALLY BLANK

AD 0.4 CHECKLIST OF AIP TIMOR-LESTE PAGES

Edition No.	Page	Date
12	Cover 1-2	12 JUN 25
12	3-1 to 3-35	12 JUN 25
12	3-36 to 3-37	25 MAR 21
12	3-38	12 JUN 25
12	3-39 to 3-40	12 JUN 25
12	3-41 to 3-42	25 MAR 21
12	3-43 to 3-47	12 JUN 25
12	3-48 to 3-49	15 JUN 23
12	3-50 to 3-51	15 JAN 04
12	3-52 to 3-53	12 NOV 15
12	3-54 to 3-55	03 NOV 22
12	3-56 to 3-57	12 JUN 25
12	3-58 to 3-59	30 NOV 23
12	3-60 to 3-61	APR 2012
12	3-62 to 3-63	12 JUN 25
12	3-64 to 3-65	25 MAR 21
12	3-66 to 3-67	12 JUN 25
12	3-68 to 3-69	25 MAR 21
12	3-70 to 3-74	12 JUN 25
12	3-75	01 DEC 22
12	3-76	16 JUN 22
12	3-77	12 JUN 25
12	3-78 to 3-79	25 MAR 21

12	3-80 to 3-83	12 JUN 25
12	3-84	15 JUN 23
12	3-85	01 DEC 22
12	3-86	17 APR 25
12	3-87 to 3-88	20 FEB 25
12	3-89	MAR 2017
12	3-90 to 3-91	12 JUN 25
12	3-92 to 3-93	25 MAR 21
12	3-94 to 3-96	12 JUN 25

AD 0.5 LIST OF HAND AMENDMENTS TO AIP TIMOR-LESTE

AIP page (s) Affected	Amendment text	Introduced by AIP Amendment NR

INTENTIONALLY BLANK

AD 0.6 TABLE OF CONTENTS TO PART 3 (AD)

PART 3 – AERODROMES (AD).....	3-1
AD 0	3-1
AD 0.1 PREFACE.....	3-1
1 NAME OF PUBLISHING AUTHORITY	3-1
2 APPLICABLE ICAO DOCUMENTS.....	3-1
3 AIP TIMOR-LESTE STRUCTURE	3-1
3.1 The AIP Structure.....	3-1
3.2 Part 1 – General (GEN).....	3-1
3.3 Part 2 – Enroute (ENR)	3-2
3.4 Part 3- Aerodromes (AD).....	3-3
4 REGULAR AMENDMENT INTERVAL.....	3-4
5 CONTACT IN CASE OF DETECTED ERRORS.....	3-4
AD 0.2 RECORD OF AIP TIMOR-LESTE AMENDMENTS	3-7
AD 0.3 RECORD OF AIP TIMOR-LESTE SUPPLEMENTS.....	3-9
AD 0.4 CHECKLIST OF AIP TIMOR-LESTE PAGES	3-11
AD 0.5 LIST OF HAND AMENDMENTS TO AIP TIMOR-LESTE.....	3-13
AD 0.6 TABLE OF CONTENTS TO PART 3 (AD).....	3-15
AD 1	3-19
AERODROMES/HELIPORTS - INTRODUCTION.....	3-19
AD 1.1 AERODROMES/HELIPORTS AVAILABILITY	3-19
1 INTRODUCTION	3-19
2 GENERAL.....	3-19
3 LANDINGS MADE AT OTHER THAN DILI AERODROME	3-20
4 TRAFFIC OF PERSONS AND VEHICLES ON AERODROMES.....	3-20
5 MOVEMENT OF PERSONS.....	3-21
6 SECURITY AND POLICING	3-21
7 OPERATIONS OUTSIDE OF PUBLISHED HOURS (NIGHT OPERATIONS)	3-21
8 PARKING	3-22
9 CLOSURE OF AERODROMES.....	3-23
10 LOW VISIBILITY OPERATIONS.....	3-23
11 AERODROME MARKERS AND MARKINGS	3-23

12	LIGHTING	3-23
13	VISUAL DOCKING GUIDANCE SYSTEMS.....	3-23
14	PAVEMENT STRENGTH LIMITATIONS.....	3-24
AD 1.2	RESCUE AND FIRE FIGHTING SERVICES AND SNOW PLAN	3-25
1	RESCUE AND FIRE FIGHTING SERVICES	3-25
2	LEVELS OF EMERGENCY RESPONSE AT AERODROMES.....	3-25
3	LOCAL STANDBY.....	3-25
4	FULL EMERGENCY.....	3-25
5	AERODROMES WHERE NO RFFS ESTABLISHED	3-25
6	SNOW PLAN	3-25
AD 1.3	INDEX TO AERODROMES AND HELIPORTS.....	3-27
1	INDEX.....	3-27
AD 1.4	GROUPING OF AERODROMES/HELIPORTS	3-29
1	PRIMARY/MAJOR INTERNATIONAL AERODROME	3-29
2	SECONDARY/OTHER INTERNATIONAL AERODROME	3-29
3	NATIONAL AERODROME.....	3-29
AD 1.5	STATUS OF CERTIFICATION OF AERODROMES	3-31
4	STATUS	3-31
AD 2	3-33
AERODROMES	3-33
AD 2.1	AERODROME LOCATION INDICATOR AND NAME.....	3-33
1	GENERAL.....	3-33
2	GROUND HANDLING.....	3-33
3	WPAT-ATAURO ISLAND.....	3-35
3.1	Atauro Aerodrome Chart	3-36
4	WPEC-BAUCAU	3-39
4.3	Baucau Aerodrome Chart.....	3-41
5	WPDL-DILI	3-43
5.1	Dili Aerodrome Chart	3-48
5.2	Dili VOR Chart	3-50
5.3	Dili VOR/DME B, C & D Chart.....	3-51
5.4	Dili RNAV (GNSS) RWY 08 CAT H Chart.....	3-52
5.5	Dili RNAV (GNSS) RWY 26 CAT H Chart.....	3-53
5.6	Dili ATSEV TWO SID Chart	3-54

5.7	Dili FILOM TWO SID Chart.....	3-55
5.8	Dili RNP Z RWY 08 Chart.....	3-56
5.9	Dili RNP Z RWY 26 Chart.....	3-57
5.10	Dili STAR JEMZE FOUR VICTOR ARRIVAL Chart.....	3-58
5.11	Dili STAR JEMZE FOUR QUEBEC ARRIVAL Chart.....	3-59
5.12	Dili Type A Chart	3-60
6	WPFL-LOSPALOS FUILORO	3-63
6.1	Lospalos Fuiloro Aerodrome Chart.....	3-64
7	WPMN-MALIANA.....	3-67
7.1	Maliana Aerodrome Chart	3-68
8	WPOC-OECUSSI.....	3-71
8.1	Oecussi Aerodrome Chart.....	3-75
8.2	Oecussi Type A Chart	3-77
9	WPSM-SAME.....	3-79
9.1	Same Aerodrome Chart	3-78
10	WPDB-SUAI	3-81
10.1	Suai Aerodrome Chart.....	3-84
10.2	Suai RWY 17 Departures Chart.....	3-86
10.3	Suai RWY 35 VOR/DME Chart	3-87
10.4	Suai RWY 35 RNP	3-88
10.5	Suai Type A Chart.....	3-89
11	WPVQ-VIQUEQUE.....	3-91
11.1	Viqueque Aerodrome Chart.....	3-92
AD 3	3-95
HELIPORTS	3-95
AD 3.1	HELIPORT LOCATION INDICATOR AND NAME	3-95
1	RESERVED	3-95

INTENTIONALLY BLANK

AD 1

AERODROMES/HELIPORTS - INTRODUCTION

AD 1.1 AERODROMES/HELIPORTS AVAILABILITY

1 INTRODUCTION

- 1.1 Information regarding aerodromes within Timor-Leste is published in AIP and the standards for aerodromes and heliports are published under TL-CASR Part 139 and associated MOS.
- 1.2 All aerodromes in Timor-Leste are owned by the government.
- 1.3 The aerodrome and heliport directory are published in Part 3 of the AIP.

2 GENERAL

- 2.1 Aeroportu International Presidente Nicolau Lobatu and Baucau are designated as International Aerodromes and other aerodromes as authorised by government resolutions may be used as international aerodromes. However, Presidente Nicolau Lobato International Airport presently is the only aerodrome authorised by AACTL for regular commercial operations on a charter basis.
- 2.2 Operators intending to operate international flights to Baucau aerodrome must obtain prior approval from AACTL which will consider requests on a case-by-case basis. Operators must conduct operations in accordance with the approved slot time, and are responsible for making their own arrangements with and obtain prior approval of the relevant Timor-Leste border control agencies.
- 2.3 Several airstrips and helicopter landing sites exist throughout Timor-Leste that have not been assessed as suitable for civil aircraft operations. Inclusion of an aerodrome in this AIP does not necessarily mean that it is either certified or suitable for use by an operator.
- 2.4 Due to lack of taxiways at aerodromes, pilots may be required after landing to backtrack and taxi on the runway to proceed to

aprons and, likewise, it may be required to position for takeoff.

- 2.5 Visual signs may not be available at all aerodromes.
- 2.6 No friction measuring devices are available for measuring runway surface friction.
- 2.7 Timor-Leste has high and rugged terrain. High terrain and obstructions exist close to the aerodromes. Most obstructions are unmarked or unlit. Pilots must exercise caution especially when conducting circling approaches or operating in low visibility conditions. Details of known obstructions are provided respectively for the listed aerodromes under Section [AD 2](#).
- 2.8 Aerodrome operating minima are not established. Operators shall establish aerodrome operating minima for each of the aerodromes to which they operate into in accordance with the provisions of Annex 6, Part 1.

3 LANDINGS MADE AT OTHER THAN DILI AERODROME.

- 3.1 If a landing is made other than Dili aerodrome or a designated alternate aerodrome, the pilot-in-command shall report the landing as soon as practicable to the immigration, customs, and health authorities. This notification may be through any available communication facility.
- 3.2 The pilot-in-command shall ensure that:
- a. if permission has not been granted to the aircraft at the previous landing, contact between passengers/crew, and other persons is avoided;
 - b. Cargo, baggage, and mail are not removed from the aircraft.

4 TRAFFIC OF PERSONS AND VEHICLES ON AERODROMES.

- 4.1 The grounds at aerodromes are divided into two zones as follows:
- a. Public zone comprising that part of the aerodrome opened to public; and
 - b. Restricted zone comprising the rest of the aerodrome.

5 MOVEMENT OF PERSONS

- 5.1 Movement of vehicles in the restricted zone is strictly confined to vehicles driven or used by persons issued with a special permit. Persons so authorized must respect traffic direction, traffic signs and speed limits.

6 SECURITY AND POLICING

- 6.1 Security, care, and protection of aircraft, vehicles, equipment, and goods at aerodromes are not the responsibility of the State or of the aerodrome operator and they cannot be held responsible for any loss or damage.

7 OPERATIONS OUTSIDE OF PUBLISHED HOURS (NIGHT OPERATIONS)

- 7.1 Night operations generally are not permitted at the aerodromes. However, the ANATL, E.P. or the Regional Authority of Oé-Cusse Ambeno may permit night operations for emergency purposes only, such as for urgent medical evacuation or mercy flights and training flights at Presidente Nicolau Lobato International Airport or Aeroporto Internacional de Oé-Cusse Ambeno “Rota do Sândalo”.
- 7.2 Night operations where permitted are undertaken at the sole discretion of the operator and ANATL nor the Regional Authority of Oé-Cusse Ambeno shall not be held liable for any incident or an accident arising from such operations.
- 7.3 Emergency/Mercy Flight-Any operator intending to conduct emergency night operations should give as much prior notification as possible to ANATL or the Regional Authority of Oé-Cusse Ambeno of their intentions including stating any requirement for air traffic control and aerodrome services and obtain approval.
- 7.4 When circumstances do not permit prior notification to AACTL, operators shall notify ANATL or the Regional Authority of Oé-Cusse Ambeno prior to the flight, and AACTL the following day of any emergency flight operations including positioning flights conducted the previous night.

- 7.5 Operators/pilots shall comply with the following requirements appropriate with respect to airways clearance for departing international flights when arrangements have not been made for local air traffic services:
- Contact Brisbane Radio on HF before departure providing flight details and obtain airways clearance; or
 - Contact Ujung Pandang ATSU on telephone number +62 411 553053 or +62 411 4813225 for airways clearance to enter Ujung Pandang FIR before departure.
- 7.6 Operators/pilots shall comply as appropriate with the regulations of the State of the Operator when conducting emergency night operations at Dili aerodrome. The pilot-in-command should preferably have previous experience in daytime operations into Dili aerodrome and be familiar with the routes and terrain conditions. Additionally, the following must be complied with:
- Flights shall be flown under IFR;
 - ICAO requirements for lowest safe altitudes;
 - Adequate fuel for diversion purposes;
 - Runway inspection prior to take-off and landing; and
 - Arrangements with the border control agencies for approval.
- 7.7 Operators and/or pilots-in-command are responsible to assess and ensure that each emergency night operation can be conducted in a safe manner.
- 7.8 Night Training-ANATL may approve night training flights in the Dili CTR/aerodrome to enable flight crew to maintain their proficiency. Operators wishing to conduct night training shall make a request to ANATL and comply with all conditions stated in the approval.

8 PARKING

- 8.1 Aircraft parking space at aerodromes is limited. Overnight parking at Presidente Nicolau Lobato International Airport is subject to specific approval from ANATL. Requests for overnight

parking shall be included in the request for flight approval.

9 CLOSURE OF AERODROMES

- 9.1 Aerodromes will be closed under the following conditions:
- a. Whenever the landing area is unfit or is unsafe; or
 - b. At such other times as notified by NOTAM.
 - c. Unregistered or uncertified aerodromes may not be notified as closed even when the landing area is unsafe or unfit for use, see [AD 2.1](#).
- 9.2 Aerodromes will not be closed because of adverse weather conditions or unavailability of essential services. The pilot-in-command is responsible to decide whether to take-off or land during adverse weather conditions or when advised of unavailability of services
- 9.3 Aircraft experiencing an emergency will be permitted to land regardless of whether the aerodrome is closed, or conditions are unsafe. When ATC is operating, the pilot will be advised if conditions are unsafe. Outside of ATC operating hours the pilot will receive no advice

10 LOW VISIBILITY OPERATIONS

- 10.1 Low visibility operations are not approved in Timor-Leste.

11 AERODROME MARKERS AND MARKINGS

- 11.1 Where possible, aerodrome markers and markings are in accordance with ICAO DOC 9157.

12 LIGHTING

- 12.1 Lighting, where provided at aerodromes in Timor-Leste (except WPOC and WPDB) may not necessarily be in accordance with ICAO standards. Clarification of lighting at intended aerodromes should be confirmed with ANATL to ensure that it meets individual operational needs.

13 VISUAL DOCKING GUIDANCE SYSTEMS

- 13.1 VDGS are not currently used in Timor-Leste.

14 PAVEMENT STRENGTH LIMITATIONS

14.1 Aerodrome pavement strength limitations (where known) are published at AIP [AD 2](#).

AD 1.2 RESCUE AND FIRE FIGHTING SERVICES AND SNOW PLAN

1 RESCUE AND FIRE FIGHTING SERVICES

- 3.1 Information on Rescue and Fire Fighting Services is given on the relevant page for each aerodrome at AD 2.
- 3.2 No facilities are available for removal of disabled aircraft.

2 LEVELS OF EMERGENCY RESPONSE AT AERODROMES

- 2.1 ARFFS will respond at the appropriate airport category for all emergencies.

3 LOCAL STANDBY

- 3.1 Where a Local Standby is declared, on airport services will respond for the emergency.

4 FULL EMERGENCY

- 4.1 Where a Full Emergency is declared, on and off airport services will respond for the emergency.

5 AERODROMES WHERE NO RFFS ESTABLISHED

- 5.1 Limited or no support may be provided by local fire services remote from aerodromes.

6 SNOW PLAN

- 6.1 Due to the tropical climate in Timor-Leste there is no national snow plan.

INTENTIONALLY BLANK

AD 1.3 INDEX TO AERODROMES AND HELIPORTS

1 INDEX

- 1.1 A list of aerodromes included in AIP is shown below. Aerodromes marked with * do not have a NOTAM service, and information provided in AIP may not be representative of current aerodrome conditions and may be inaccurate.

Aerodrome/Heliport Name and Location Indicator	Type of Traffic permitted to use the Aerodrome/Heliport			Reference to AD Section and RMKS
	International (INTL)/ National (NTL)	IFR VFR	S=Scheduled NS=Non Scheduled P=Private	
Aerodromes				
WPAT-Atauro Island*	NTL	VFR	NS P	AD 2.2 Unmanned
WPEC-Baucau	INTL NTL	VFR	NS P	AD 2.3 Unmanned
WPDL-Dili	INTL NTL	VFR IFR	S NS P	AD 2.4 PPR
WPFL-Lospalos Fuiloro*	NTL	VFR	NS P	AD 2.5 Unmanned
WPMN-Maliana*	NTL	VFR	NS P	AD 2.6 Unmanned
WPOC-Oecussi	INTL NTL	VFR	NS P	AD 2.7 PPR
WPSM-Same*	NTL	VFR	NS P	AD 2.8 Unmanned
WPDB-Suai	INTL NTL	VFR IFR	NS P	AD 2.9 AFIS
WPVQ-Viqueque*	NTL	VFR	NS P	AD 2.10 Unmanned
Heliports				Reserved

INTENTIONALLY BLANK

AD 1.4 GROUPING OF AERODROMES/HELIPORTS

1 PRIMARY/MAJOR INTERNATIONAL AERODROME

- 1.1 The aerodrome of entry and departure for international air traffic where all formalities concerning customs, health, immigration, animal and plant quarantine and similar procedures are carried out and where air traffic services are available during published hours of operation.

2 SECONDARY/OTHER INTERNATIONAL AERODROME

- 2.1 An aerodrome available for entry and departure of international air traffic where air traffic services and the formalities concerning customs, health, immigration, animal and plant quarantine and similar procedures are made available on a restricted basis only to flights with prior approval.

3 NATIONAL AERODROME

- 3.1 An aerodrome available only for domestic air traffic where civil air traffic are permitted under conditions specified by ANATL.
- 3.2 Nomination as an aerodrome as a national aerodrome does not necessarily mean that the aerodrome is certified or registered.

INTENTIONALLY BLANK

AD 1.5 STATUS OF CERTIFICATION OF AERODROMES

4 STATUS

4.1 A list of certified aerodromes in Timor-Leste is shown below:

- a. WPDL- President Nicolau Lobato International Airport Dili

INTENTIONALLY BLANK

AD 2

AERODROMES

AD 2.1 AERODROME LOCATION INDICATOR AND NAME

1 GENERAL

- 1.1 Full details of all international and national aerodromes in Timor- Leste are provided in AIP.
- 1.2 Details of uncertified and unregistered aerodromes may also be included in AIP. It is the sole responsibility of a pilot intending to use any uncertified or unregistered aerodrome to obtain current information on that aerodrome from the owner/operator prior to flight planning and to assess the suitability of the aerodrome for the intended operation.
- 1.3 Inclusion of aerodrome information in AIP is based upon the information available at the time of publication and will not be updated by NOTAM for uncertified or unregistered aerodromes.

2 GROUND HANDLING

- 2.1 Contact details of aircraft fuel and ground handling service providers at Presidente Nicolau Lobato International Airport are listed in this section.
- 2.2 The provision of any firm or corporation name is for the information and convenience of aircraft operators and pilots only and in no manner constitutes an endorsement or recommendation by AACTL or ANATL.

INTENTIONALLY BLANK

3 WPAT-ATAURO ISLAND

Name: Atauro Island

- a. ICAO Code: WPAT
- b. IATA Code: AUT
- c. Airport Authority: ANATL
- d. Flight Approvals: AACTL
 - i. +670 77372679
 - ii. +670 7839131
 - iii. PPR 7 Business Days

ARP: 081435S 1253622E

Elevation: 10'

Runways:

- a. RWY 01/19
- b. Length: 700m
- c. Gravel

Declared Distances: Not available

Airport Lighting: NIL

Air Traffic Control: NIL

Navigation Aids: NIL

ARFFS: NIL

Fuel: NIL

Local Traffic Regulations:

- a. Traffic shall use Timor Common Freq 127.10MHz
- b. Airport available HJ only
- c. VFR Traffic only
- d. Right hand circuits RWY 01

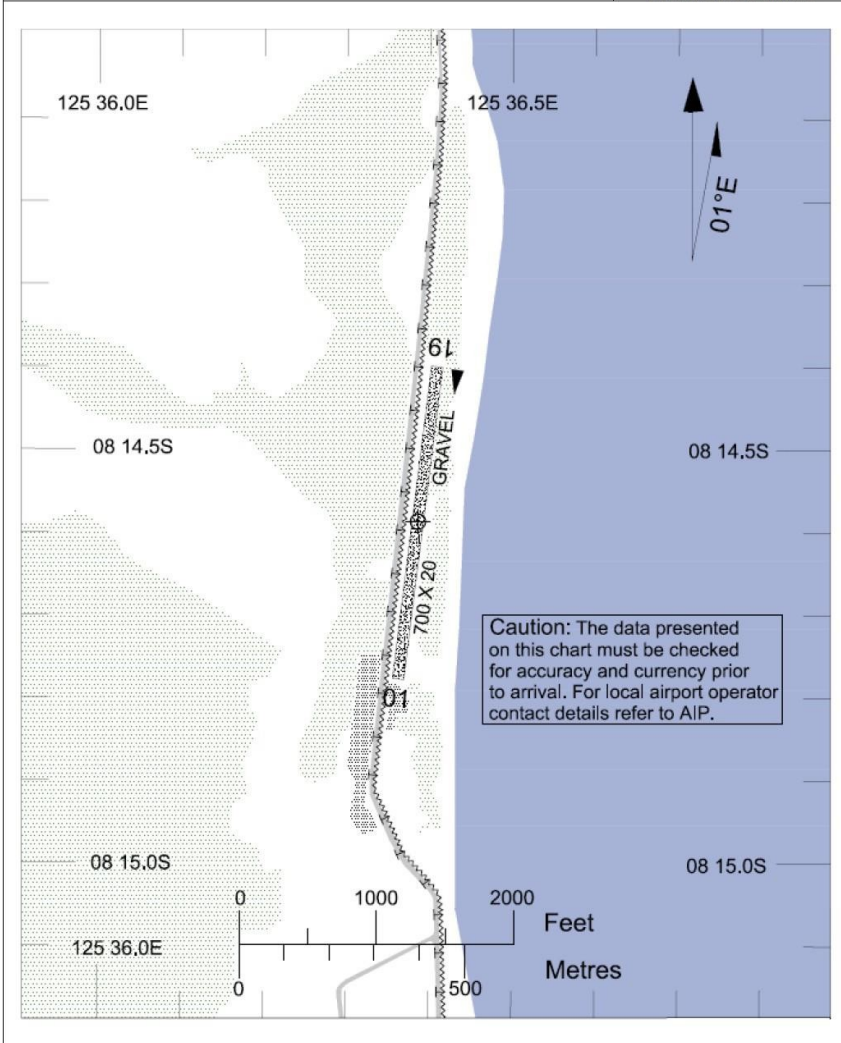
3.1 Atauro Aerodrome Chart

AERODROME
CHART AD 2-2

AD ELEV 10
08 14 35S 125 36 22E
TIMOR COMMON
127.1

ATAURO (WPAT)
TIMOR-LESTE

Bearings are Magnetic
Elevations in FEET AMSL
Dimensions in METRES



25MAR21

AERODROME
CHART AD 2-2

AD ELEV 10
08 14 35S 125 36 22E

ATAURO (WPAT)
TIMOR-LESTE

TIMOR COMMON 127.1		Bearings are Magnetic Elevations in FEET AMSL Dimensions in METRES
RWY	DIRECTION	
01	006°	
19	186°	

NOTES

CAUTION: HOUSES, TREES AND FENCES LOCATION IMMEDIATELY PRIOR TO THR RWY 01.

ANIMAL HAZARDS EXIST.
AIRPORT AVAILABLE HJ ONLY
RIGHT HAND CIRCUITS RWY 01
VFR TRAFFIC ONLY

25MAR21

INTENTIONALLY BLANK

4 WPEC-BAUCAU

Name: Baucau Airport

- a. ICAO Code: WPEC
- b. IATA Code: BCH
- c. Airport Authority: ANATL (Approval Required)
- d. Flight Approvals: AACTL
 - i. +670 77372679
 - ii. +670 7839131
 - iii. PPR-7 business days

ARP: 082907.70S 1262357.60E

Elevation: 1777'

Runways:

- a. Asphalt PCN: 49/F/A/W/T
- b. THR 14 Co-Ordinates 082835.31S 1262332.36E
 - i. Elevation: 1692'
- c. THR 32 Co-Ordinates 082939.85S 1262422.64E
 - i. Elevation: 1777'
- d. RWY Bearing: 139°/319°M
- e. Length: 2509m
- f. Width: 56m
- g. Shoulders: Nil
- h. RWS: 2629x300m
- i. RESA: Nil
- j. CWY: Nil

Declared Distances:

- a. TORA: 14/32 2509m
- b. TODA 14/32: 2509m
- c. ASDA 14/32: 2509m
- d. LDA 14/32: 2509m

Taxiways:

- a. Asphalt PCN: 49/F/A/W/T
- b. TWY width: 37m

Apron Information:

- a. Asphalt PCN: 49/F/A/W/T
- b. 100x108m

4.1**Airport Lighting:**

- a. MIRL (PAL)
 - i. Manual activation by ANATL staff
- b. Taxiways

4.2**Air Traffic Control: Nil****Navigation Aids: Nil****ARFFS: Nil****Fuel: Nil****Local Traffic Regulations:**

- a. Traffic shall use Timor Common Freq
127.10MHz
- b. Pilots must overfly aerodrome to observe prior
to making an approach
- c. VFR traffic only

4.3 Baucau Aerodrome Chart

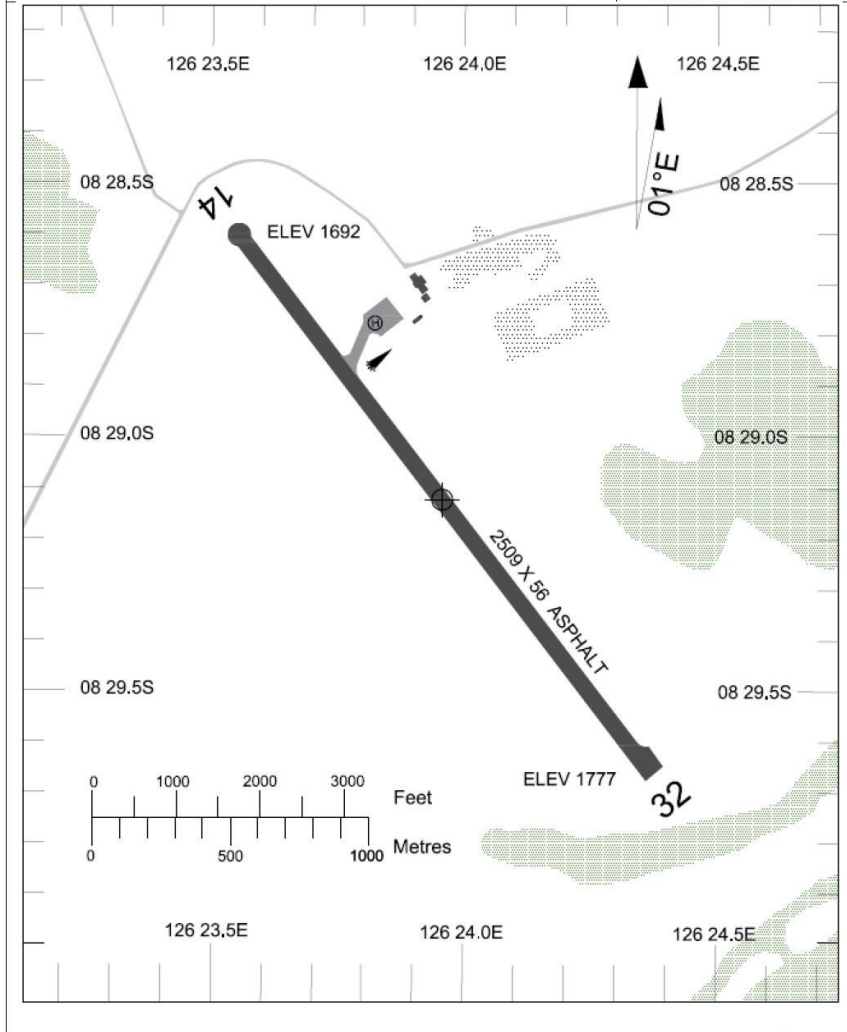
AERODROME
CHART AD 2-3

AD ELEV 1777
08 29 07.7S 126 23 57.6E

BAUCAU (WPEC)
TIMOR-LESTE

TIMOR COMMON
127.1

Bearings are Magnetic
Elevations in FEET AMSL
Dimensions in METRES



AERODROME
CHART AD 2-3

AD ELEV 1777
08 29 08S 126 23 58E

BAUCAU (WPEC)
TIMOR-LESTE

TIMOR COMMON 127.1				Bearings are Magnetic Elevations in FEET AMSL Dimensions in METRES
RWY	DIRECTION	THR	RWS	BEARING STRENGTH
14	139°	08 28 35.3S 126 23 32.4E	2629 X 300	PCN 49/F/A/W/T
32	319°	08 29 39.9S 126 24 22.6E		

NOTES

ANIMAL HAZARDS EXIST.
PILOTS MUST OVERFLY AD TO OBSERVE PRIOR TO MAKING AN APPROACH
AIRPORT AVAILABLE HJ ONLY

25MAR21

5 WPDL-DILI

Name: President Nicolau Lobato International Airport Dili

- a. ICAO Code: WPDL
- b. IATA Code: DIL
- c. Airport Authority: ANATL (Approval Required)
- d. Flight Approvals: AACTL
 - i. +670 77372679
 - ii. +670 7839131
 - iii. WPDLYDYX, WPDLZTZX
 - iv. PPR 7 Business Days
- e. CASR Part 139 Certified Airport

ARP: 083248.88S 1253129.89E

Aerodrome Reference Code: 3C

Exemptions:

- a. OLS Horizontal surface penetrations-Permanent
- b. No RESA (exemption till 31/12/25)
- c. Obstacle markings (exemption till 31/12/25)
- d. Establishment of fixed emergency operation centre (exemption till 31/12/25)
- e. Water rescue equipment (exemption till 31/12/25)
- f. Runway friction measuring equipment (exemption till 31/12/25)
- g. GRF not implemented

Elevation: 29'

Runways:

- a. Asphalt/Concrete
 - i. PCN: 42/F/B/X/U
- b. THR 08 Co-Ordinates 083254.12S 1253059.06E
 - i. Elevation: 21'

- c. THR 26 Co-Ordinates 083240.73S 1253158.04E
 - i. Elevation: 29'
- d. RWY Bearing: 075°/255°M
- e. Length: 1850m
- f. Width: 30m
- g. Shoulders: Not provided
- h. RWS: 1970x150m
- i. RESA: Not provided
- j. CWY: Not provided

Declared Distances:

- a. TORA 08/26: 1850m
- b. TODA 08/26: 1850m
 - i. Fence 5' ABV THR and 40m right of centreline not assessed for TODA RWY 26
- c. ASDA 08/26: 1850m
- d. LDA 08/26: 1850m

Taxiways:

- a. TWY D width: 23m
- b. TWY A width: 15m
- c. TWY B width: 15m
- d. TWY C width: 15m
- e. TWY E width: 11m
- f. TWY W width:....m

Apron Information:

- a. Asphalt/Concrete:
 - i. PCN: 42/F/B/X/U

Parking Stands:

- a. International Apron
 - i. Bays D1, D2, D3 and VIP Code C

- b. Other Aprons
 - i. Apron A-Rotary and fixed wing up to 3C
 - ii. Apron B- Rotary and fixed wing up to 3C
 - iii. Apron C- Rotary and fixed wing up to 3C
 - iv. Apron E-Rotary and General Aviation

Airport Lighting:

- a. PAPI
- b. ABN GW

Air Traffic Control:

- a. Dili Approach: 122.90MHz
 - i. TX/RX located at Dili and Talabela, Hohonaro Liquilibato
- b. Dili Tower: 133.90MHz
- c. ATC Hrs 2130 – 0900 UTC daily
- d. TIBA: 127.10MHz
 - i. TX/RX located at Dili and Talabela, Hohonaro Liquilibato

Navigation Aids:

- a. VOR/DME: 113.40 MHz/CH81X (DIL)
 - i. 083238.18S 1253139.84E
 - ii. VOR/DME has limited range due terrain to the south

Standby Power:

- a. Available for critical systems, max switchover time 15 seconds

ARFFS:

- a. Category 6
- b. Water rescue service not available

Fuel (JET A1):

- a. ETO MOVING ENERGY
 - i. Tel: +670 3322 793,
Mobile: +670 77231420 , +670 7757 1385
WhatsApp: +659622849
 - ii. Email: anthony.chan@eto.tl,
 - iii. Website: www.eto.tl,
- b. PERTAMINA INTERNATIONAL TIMOR SA
 - i. Tel: +670 3321 760
 - ii. Mobile: +670 7310 6060
 - iii. E-mail: roni.viera@pitsa.tl,
 - iv. Website: www.pitsa.tl,

Handling

- a. Ceva Logistic.
 - i. Tel: +670 3322818, +670 3311564
 - ii. Mobile: +670 77230522(H24), +670 77231113
 - iii. Fax: Main office +670 3324077
 - iv. E-mail: manuel.soares@cevalogistic.com,
 - v. Website: www.cevalogistic.com,
- b. STAT
 - i. Tel: +670 3321 025,
Mobile: +670 74849333, +670 74911854,
+670 77237433

- ii. E-mail: info@statdili.com,
dora.statdili@gmail.com,
- iii. Website: www.statdili.com.

Local Traffic Regulations:

- a. Right hand circuits RWY 26
- b. Helicopters must use runway for ARR and DEP and shall ground taxi to/from aprons
- c. Obstacles infringing OLS may not be lit
- d. Penetration of VSS by telecommunications mast, 526' AMSL, BRG 248M/2.59NM from DIL VOR, lit. VSS penetrated by 44.9m
- e. Transient ships may infringe the RWY APCH slope clearance and VSS.

5.1 Dili Aerodrome Chart

PRESIDENTE NICOLAU LOBATO

INTL (WPDL)

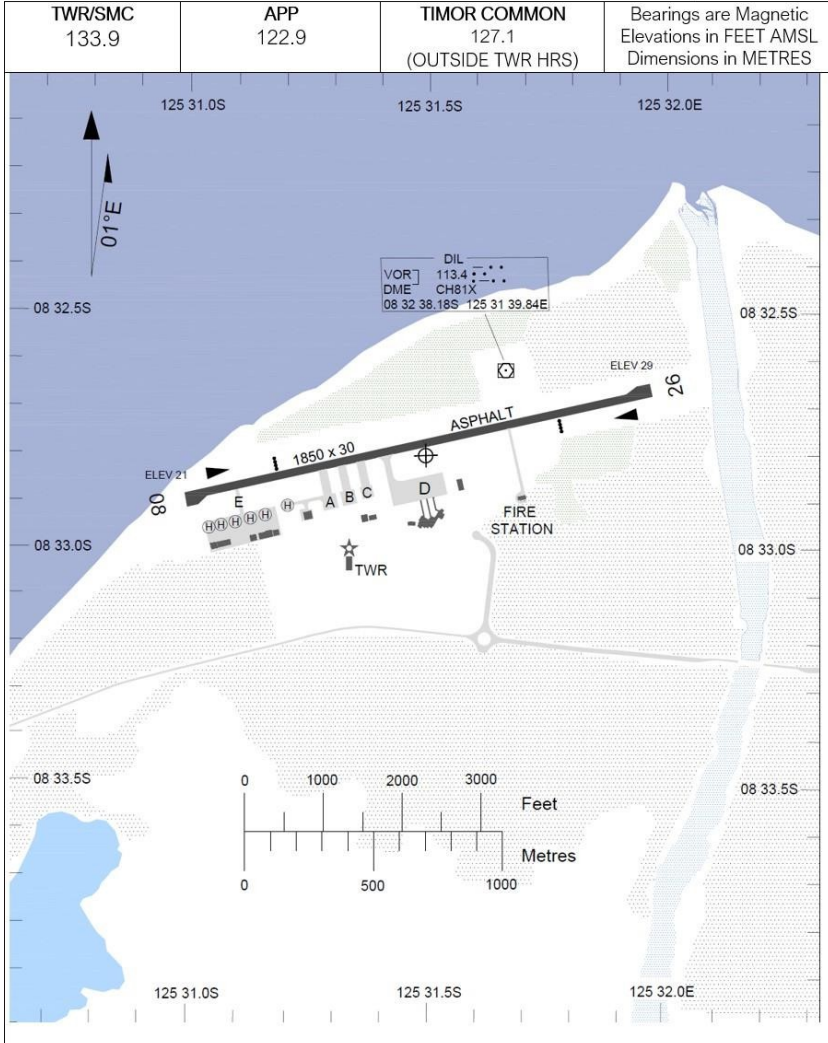
AERODROME

AD ELEV 29

CHART AD 2-4

08 32 48.88S 125 31 29.89E

DILI, TIMOR-LESTE



Changes: TWR/SMC FRQ CORRECTION

15JUN23

PRESIDENTE NICOLAU LOBATO

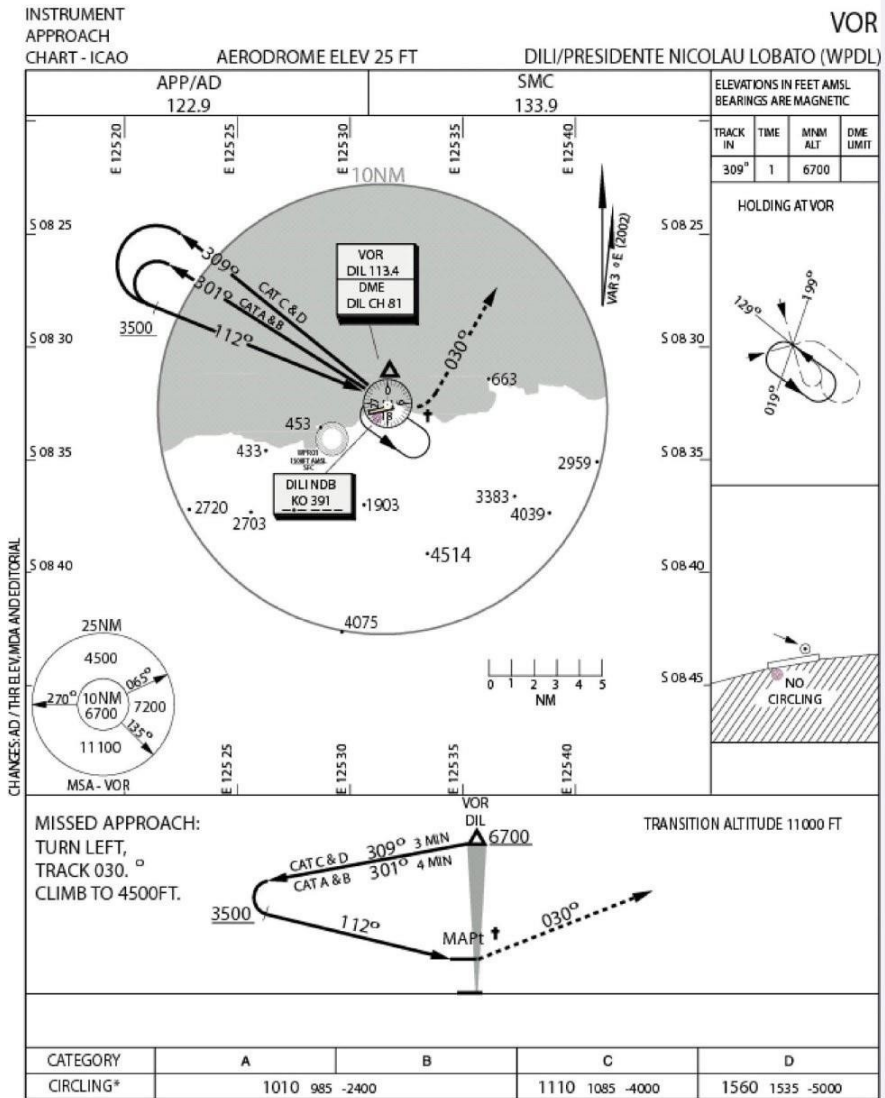
AERODROME
CHART AD 2-4AD ELEV 29
8 32 48.88S 125 31 29.89EINTL (WPDL)
DILI, TIMOR-LESTE

TWR/SMC 133.9		APP 122.9		TIMOR COMMON 127.1 (OUTSIDE TWR HRS)		Bearings are <u>Magnetic</u> Elevations in FEET AMSL Dimensions in METRES	
RWY	DIRECTION	THR	RWS	BEARING STRENGTH			
08	075°	08 32 54.13S	1970 X 150	PCN 42/F/B/X/U			
		125 30 59.06E					
26	255°	08 32 40.73S					
		125 31 58.04E					
RWY	AERODROME LIGHTING						
08	PAPI LEFT SIDE 3°		ABN GW				
26	PAPI LEFT SIDE 3°						
<p>NOTES</p> <p>CAUTION: HILLS WEST AND EAST NEAR BOTH ENDS OF RWY. CAUTION: BIRD AND ANIMAL HAZARDS EXIST.</p> <p>RWY 26 RH CIRCUITS AIRPORT AVAILABLE HJ ONLY PRIOR PERMISSION REQUIRED FOR NGT OPS (EMERGENCY ONLY). ACFT WITH MTOW GREATER THAN 7000KG MUST ROLL TO RWY END AFTER LANDING AND BACKTRACK TO PREVENT DAMAGE TO RWY. HELICOPTERS MUST USE RWY FOR ARR AND DEP AND TAXI TO/FROM APRONS</p>							

Changes: TWR/SMC FRQ CORRECTION

15JUN23

5.2 Dili VOR Chart



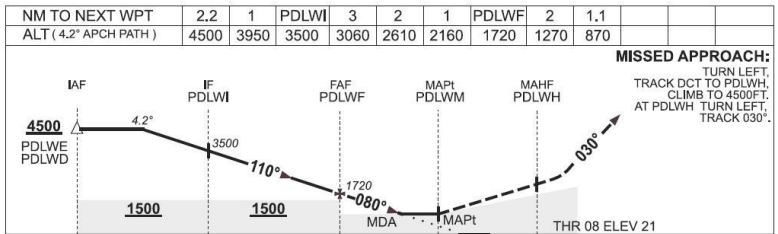
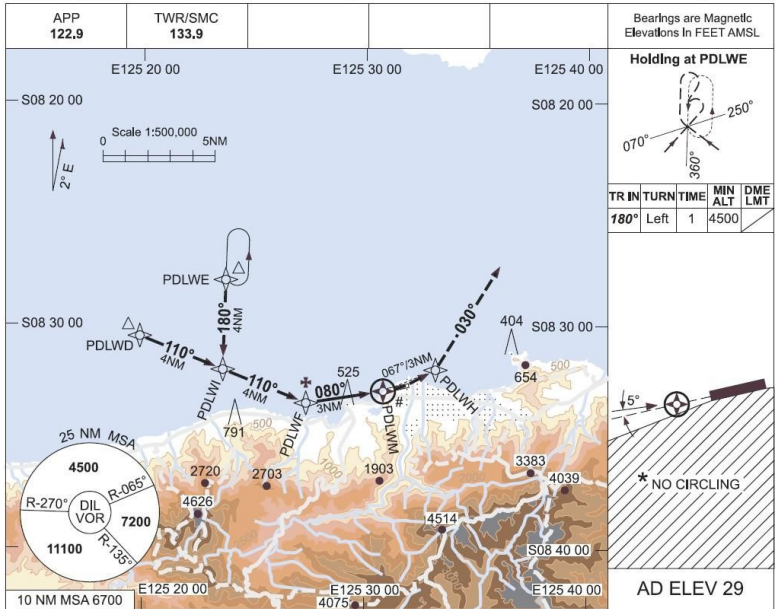
NOTES:

- * 1. NO CIRCLING SOUTH OF RWY 08/26
- 2. MAX IAS:- HOLDING, INITIAL & MAPt TURN: 210KT

WPDL/VOR/01

5.4 Dili RNAV (GNSS) RWY 08 CAT H Chart

CAD APPROVED OPERATORS ONLY
 USE QNH
 12 NOV 2015
 RNAV (GNSS) RWY 08
 DILI, PRESIDENTE NICOLAU LOBATO (WPDL)



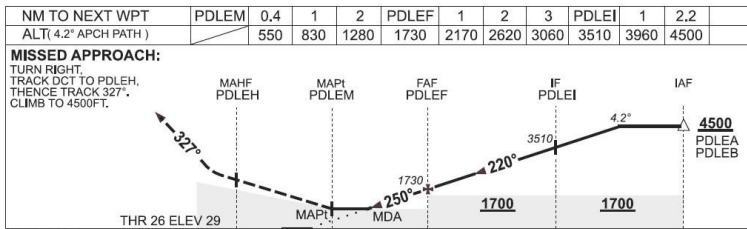
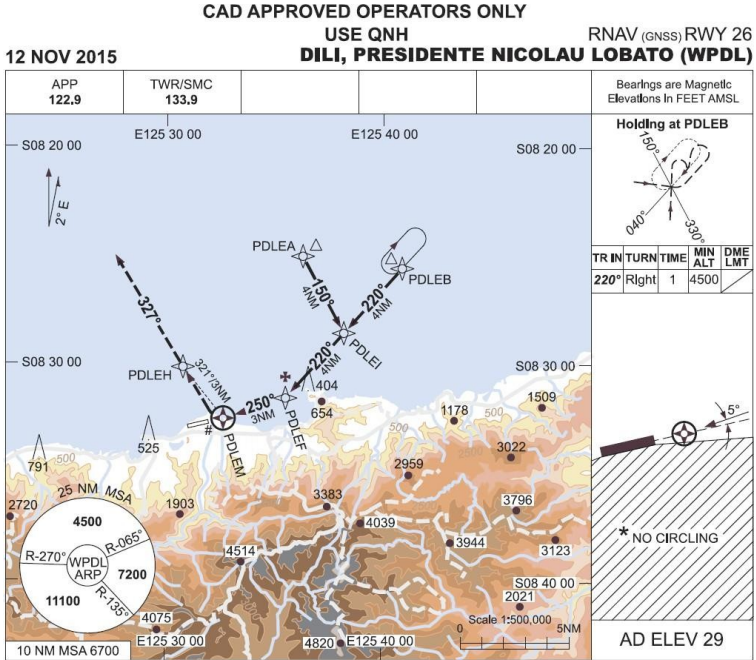
CATEGORY	H
S-I GNSS	870 (849-3.5)
	NOT AUTHORISED

- MISSED APPROACH:**
 TURN LEFT, TRACK DCT TO PDLWH, CLIMB TO 4500FT. AT PDLWH TURN LEFT, TRACK 030°.
- NOTES**
1. WPDL QNH REQUIRED.
 2. MAX IAS: HOLDING : 100KT INITIAL : 100KT
 3. APCH PATH ANGLE DOES NOT COINCIDE WITH PAPI ON GLIDE SLOPE INDICATION.

Changes: NEW PROC.



5.5 Dili RNAV (GNSS) RWY 26 CAT H Chart



NOTES

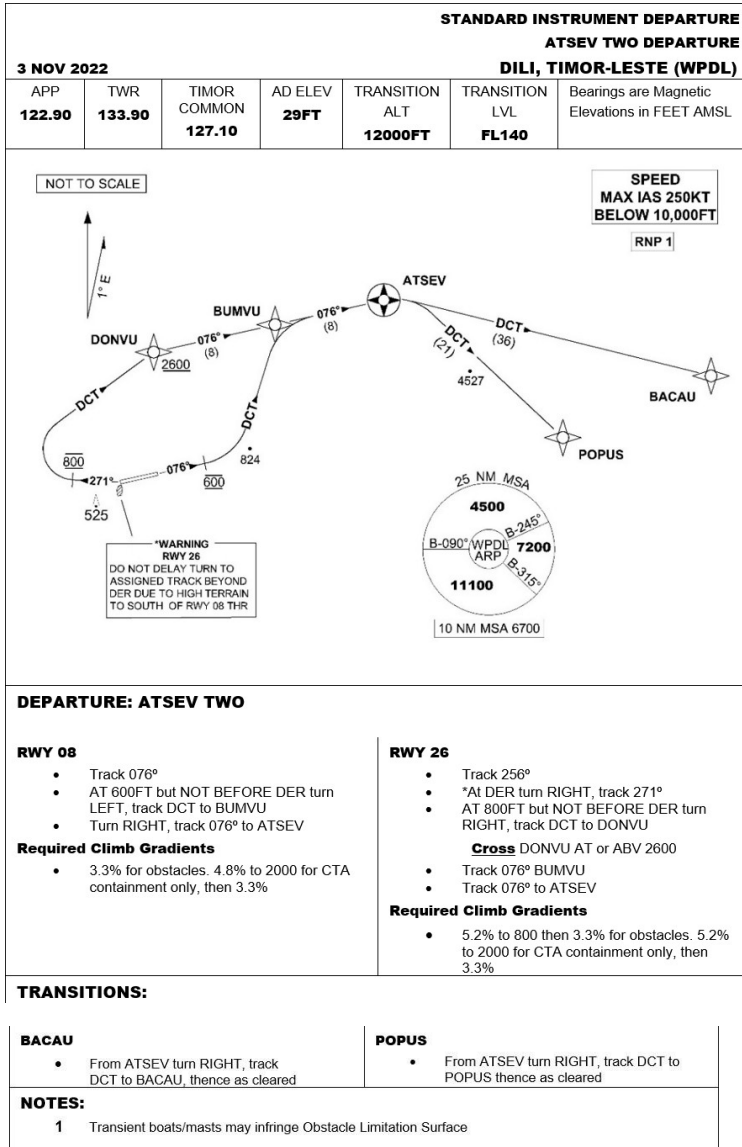
- WPDL QNH REQUIRED.
- MAX IAS: HOLDING: 100KT
INITIAL : 100KT
MAP TURN: 90KT.
- APCH PATH ANGLE DOES NOT COINCIDE WITH PAPI ON GLIDE SLOPE INDICATION.

CATEGORY	H
S-I GNSS	550 (521-2.2)
	NOT AUTHORISED

Changes: NEW PROC.



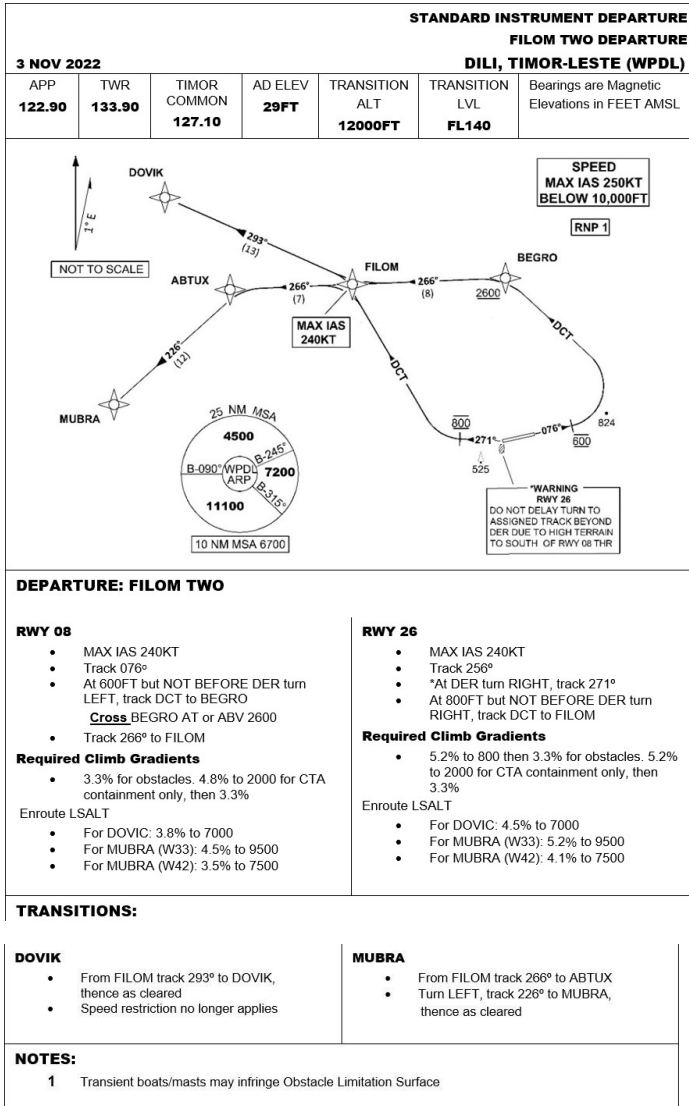
5.6 Dili ATSEV TWO SID Chart



PROC NAME, TURN AT DER, TRANSITION INFO, GRADIENT LAYOUT, EDITORIAL CHANGES



5.7 Dili FILOM TWO SID Chart



DEPARTURE: FILOM TWO

RWY 08

- MAX IAS 240KT
- Track 076°
- At 600FT but NOT BEFORE DER turn LEFT, track DCT to BEGRO
- Cross BEGRO AT or ABV 2600
- Track 266° to FILOM

Required Climb Gradients

- 3.3% for obstacles. 4.8% to 2000 for CTA containment only, then 3.3%

Enroute LSALT

- For DOVIC: 3.8% to 7000
- For MUBRA (W33): 4.5% to 9500
- For MUBRA (W42): 3.5% to 7500

RWY 26

- MAX IAS 240KT
- Track 256°
- *At DER turn RIGHT, track 271°
- At 800FT but NOT BEFORE DER turn RIGHT, track DCT to FILOM

Required Climb Gradients

- 5.2% to 800 then 3.3% for obstacles. 5.2% to 2000 for CTA containment only, then 3.3%

Enroute LSALT

- For DOVIC: 4.5% to 7000
- For MUBRA (W33): 5.2% to 9500
- For MUBRA (W42): 4.1% to 7500

TRANSITIONS:

DOVIK

- From FILOM track 293° to DOVIK, thence as cleared
- Speed restriction no longer applies

MUBRA

- From FILOM track 266° to ABTUX
- Turn LEFT, track 226° to MUBRA, thence as cleared

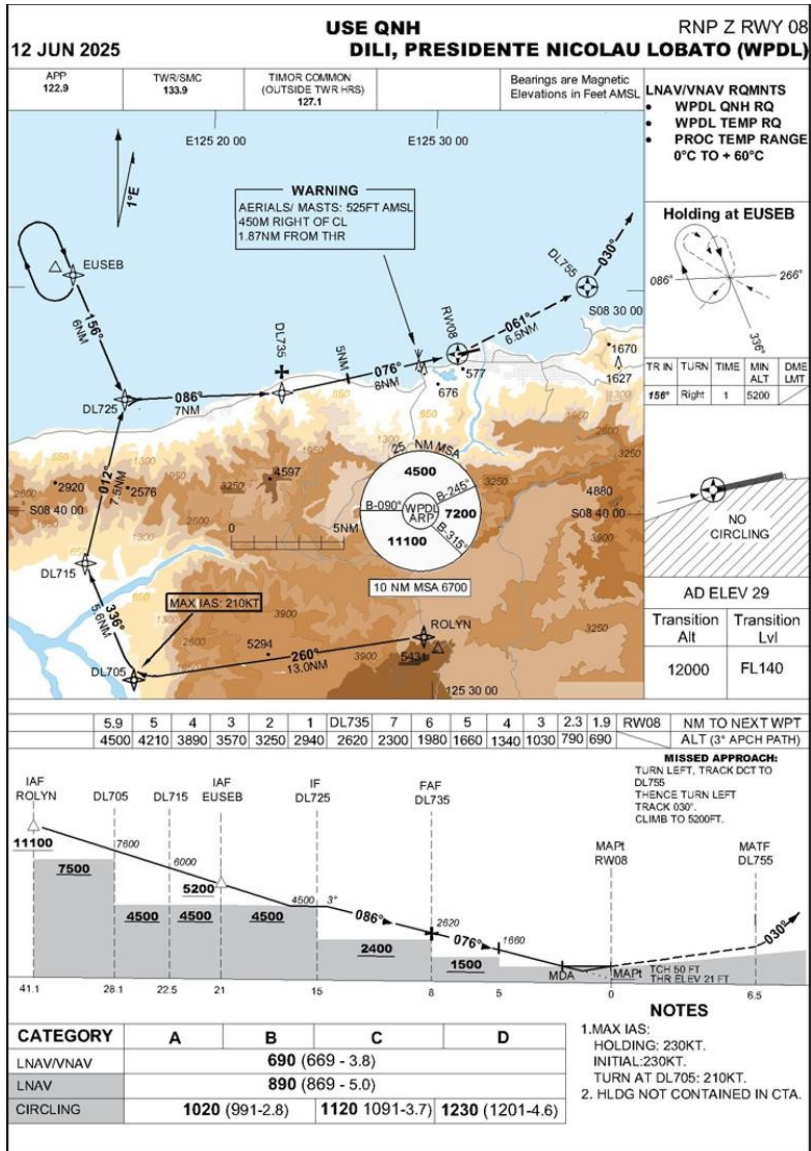
NOTES:

- 1 Transient boats/masts may infringe Obstacle Limitation Surface

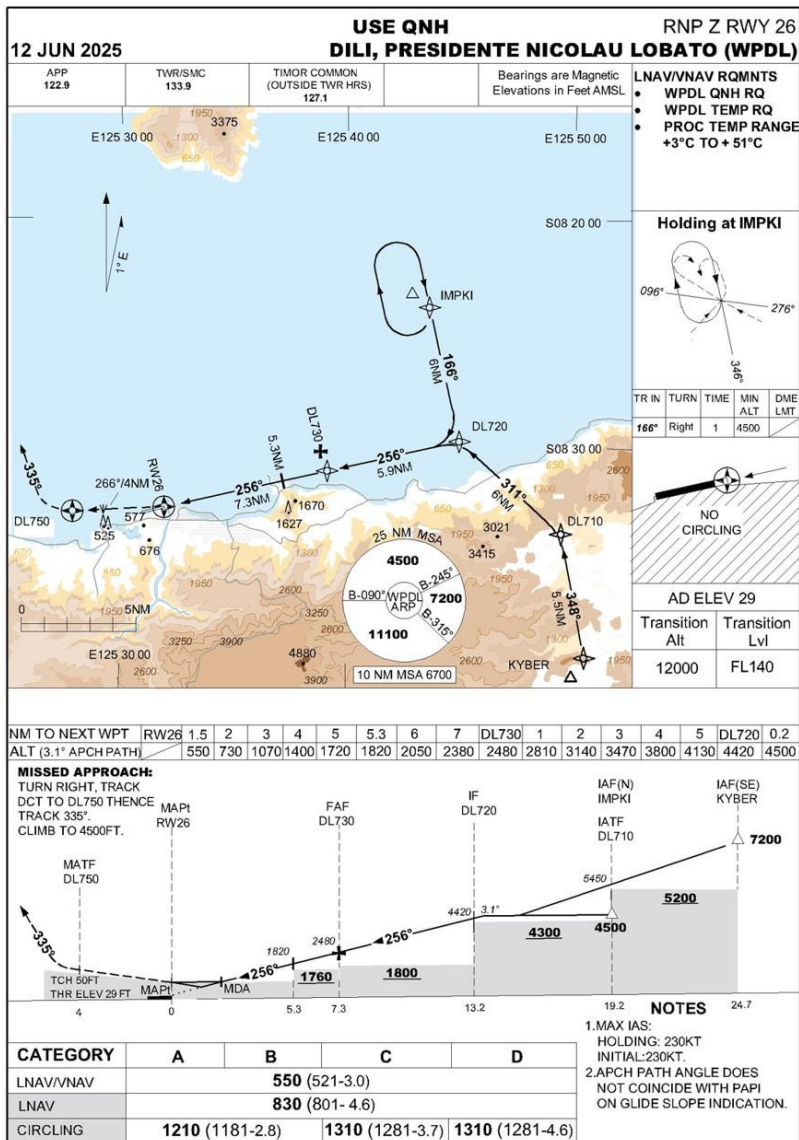
PROC NAME, TURN AT DER, TRANSITION INFO, GRADIENT LAYOUT, EDITORIAL CHANGES



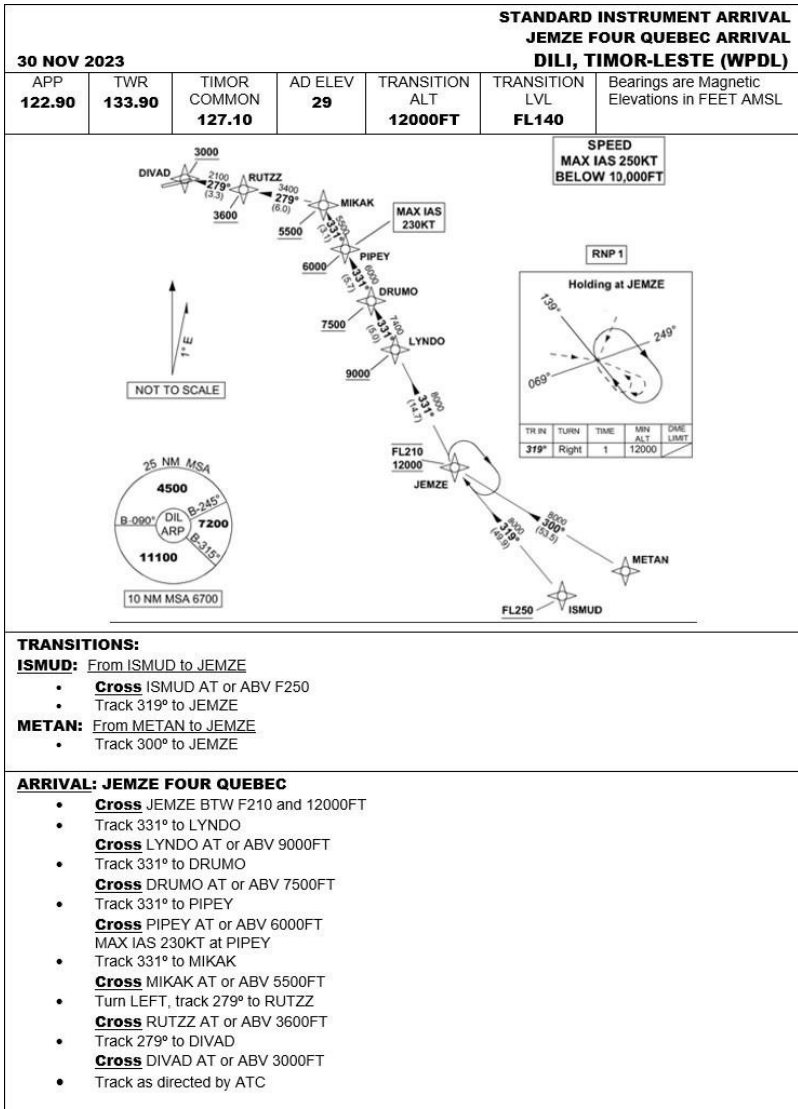
5.8 Dili RNP Z RWY 08 Chart



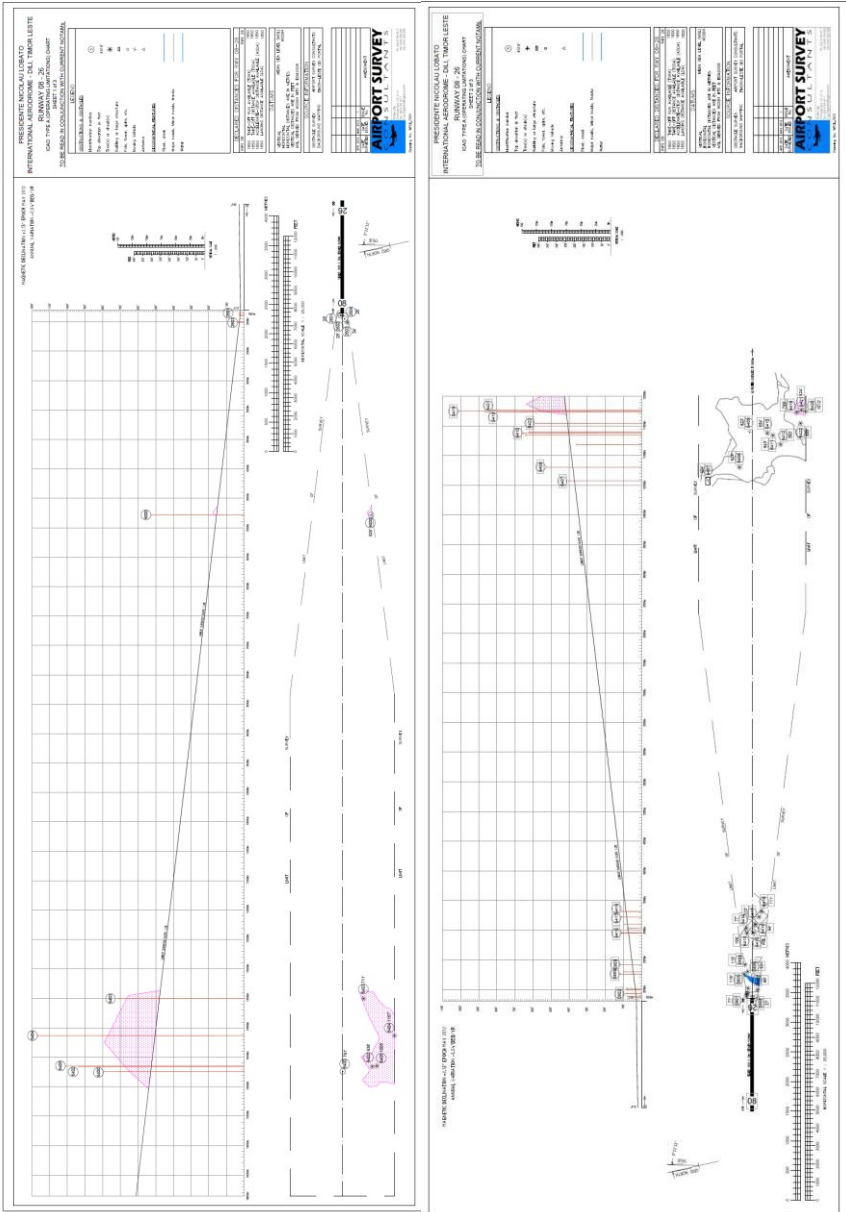
5.9 Dili RNP Z RWY 26 Chart




5.11 Dili STAR JEMZE FOUR QUEBEC ARRIVAL Chart



5.12 Dili Type A Chart



PRESIDENTE NICOLAU LOBATO INTERNATIONAL AERODROME - DILI							
TYPE A OPERATING CHART - OBSTACLE DATA							
SURVEYED: P.FITZGERALD							
DATE: APRIL 2012							
SHEET 3 OF 3 SHEETS							
							
Point ID	Dist from SOT	Offset (-ve is L, +ve is R)	WGS84 Zone 51		MSL Elev (m)	MSL Elev (ft)	Description
			Easting	Northing			
0808	1856.5	74.1	778838.0	9054502.6	11.2	37	Perimeter Fence
0801	1877.6	-93.5	778822.4	9054670.9	23.6	77	Tree
0802	1920.8	-95.1	778864.3	9054681.8	28.0	92	Tree
0803	1926.1	-73.7	778874.1	9054662.0	24.5	80	Tree
0807	1987.5	89.0	778969.2	9054516.4	24.3	80	Tree
0804	2013.5	-70.1	778960.3	9054677.4	25.2	83	Tree
0805	2254.9	-136.2	779181.8	9054794.2	35.9	118	Tree
0806	2294.9	-76.6	779233.8	9054744.6	28.5	93	Tree
0809	2411.7	-118.1	779338.9	9054810.4	35.1	115	Tree
6413	2942.5	-87.1	779864.2	9054894.8	32.3	106	Tree
6415	2947.0	17.9	779891.2	9054793.2	33.5	110	Tree
6414	3026.5	-97.8	779943.9	9054923.5	23.5	77	Tree
6416	3092.2	48.7	780039.8	9054794.5	28.5	94	Tree
6417	3216.4	117.0	780175.9	9054754.7	33.5	110	Tree
6418	3307.0	159.6	780273.6	9054732.6	33.7	111	Tree
6407	10564.4	-743.2	787168.3	9057183.6	123.2	404	Cristo Rei Statue
6408	10795.9	-213.1	787509.1	9056715.7	160.0	525	Tree
6412	11180.3	477.9	788034.0	9056123.7	109.7	360	Tree
6411	11334.0	348.9	788156.3	9056282.9	195.9	643	Tree
6410	11369.5	256.8	788171.1	9056380.6	199.3	654	Tree
6409	11393.1	-42.6	788129.4	9056678.2	190.0	623	Terrain
6422	11535.3	816.0	788453.9	9055870.2	178.3	585	Tree
6419	11728.1	754.9	788629.1	9055971.5	243.5	799	Tree
6420	11738.6	900.0	788670.7	9055832.0	308.4	1012	Tree
6421	11758.6	830.2	788675.2	9055904.5	251.1	824	Tree
2601	1851.7	43.8	776997.3	9054216.1	8.5	28	Perimeter Fence
2602	1887.2	27.9	776966.0	9054192.9	8.5	28	Perimeter Fence
2604	1947.2	-40.9	776922.3	9054112.7	7.8	26	Sign
2603	2008.7	-85.8	776871.9	9054055.5	10.2	34	Tree
6000	5274.7	-495.5	773769.9	9052949.2	159.9	525	Comms Tower
6403	13491.2	-367.7	765716.3	9051298.1	216.8	711	Tree
6404	14122.2	-900.1	765215.0	9050641.7	355.7	1167	Tree
6405	14636.8	-596.2	764646.7	9050827.3	307.3	1008	Tree
6402	14646.4	-516.4	764620.1	9050903.2	285.8	938	Tree
6400	14730.3	-8.1	764428.2	9051381.5	241.0	791	Comms Tower

INTENTIONALLY BLANK

6 WPFL-LOSPALOS FUILORO**Name:** Lospalos Fuiloro

- a. ICAO Code: WPFL
- b. Airport Authority: ANATL
- c. Flight Approvals: AACTL
 - i. +670 77372679
 - ii. +670 7839131
 - iii. PPR 7 Business Days

ARP: 082651S 1265916E**Elevation:** 1350'**Runways:**

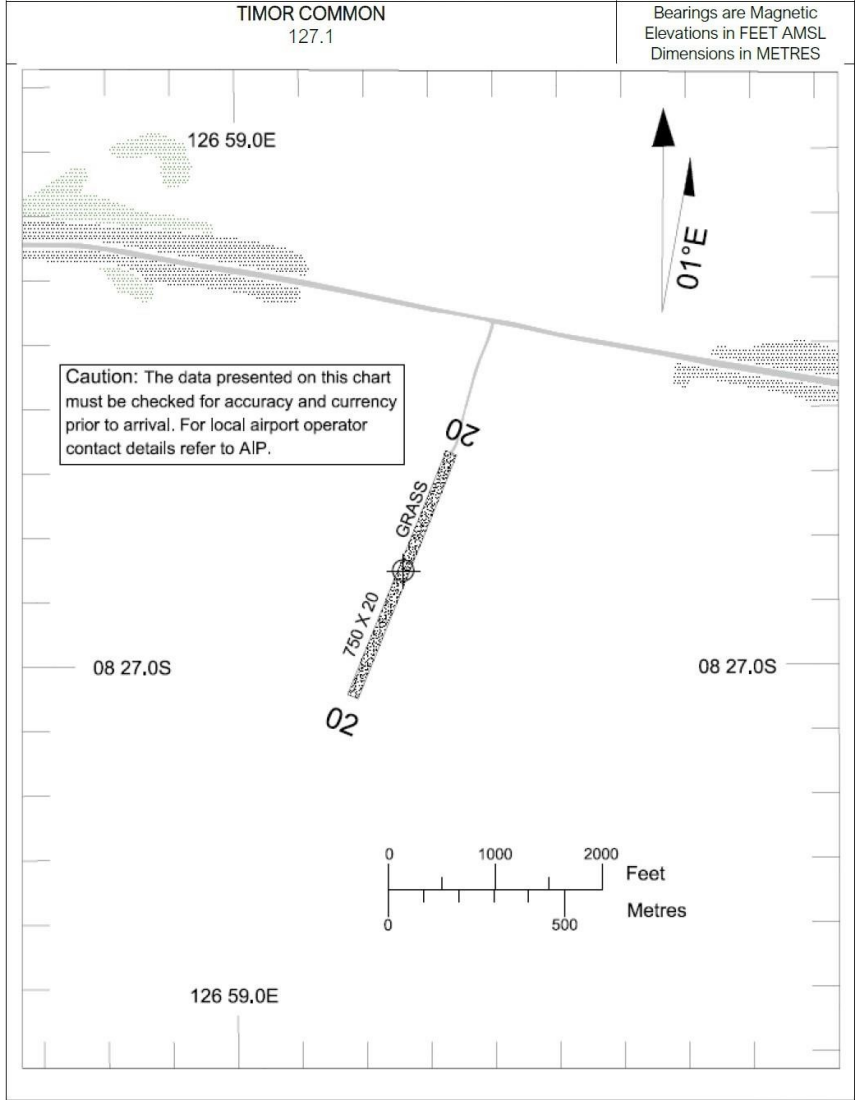
- a. RWY 02/20
- b. Length: 750m
- c. Grass

Declared Distances: Not available**Airport Lighting:** NIL**Air Traffic Control:** NIL**Navigation Aids:** NIL**ARFFS:** NIL**Fuel:** NIL**Local Traffic Regulations:**

- a. Traffic shall use Timor Common Freq 127.10MHz
- b. Airport available HJ only
- c. VFR traffic only

6.1 Lospalos Fuiloro Aerodrome Chart

AERODROME AD ELEV 1350 LOSPALOS FUILORO (WPFL)
CHART AD 2-5 08 26 51S 126 59 16E TIMOR-LESTE



25MAR21

AERODROME
CHART AD 2-5

AD ELEV 1350
08 26 51S 126 59 16E

LOSPALOS FUILOORO (WPFL)
TIMOR-LESTE

TIMOR COMMON 127.1		Bearings are Magnetic Elevations in FEET AMSL Dimensions in METRES
RWY	DIRECTION	
02	021°	
20	201°	

NOTES

ANIMAL HAZARDS EXIST.
VEHICLES USE RWY AS A ROADWAY.
RWY CONDITION DETERIORATES AFTER HEAVY RAIN.
AIRPORT AVAILABLE HJ ONLY.
VFR TRAFFIC ONLY.

25MAR21

INTENTIONALLY BLANK

7 WPMN-MALIANA**Name:** Maliana

- a. ICAO Code: WPMN
- b. IATA Code: MPT
- c. Airport Authority: ANATL
- d. Flight Approvals: AACTL
 - i. +670 77372679
 - ii. +670 7839131
 - iii. PPR 7 Business Days

ARP: 085820S 1251254E**Elevation:** 700'**Runways:**

- a. RWY 11/29
- b. Length: 860m
- c. Gravel/Grass

Declared Distances: Not available**Airport Lighting:** NIL**Air Traffic Control:** NIL**Navigation Aids:** NIL**ARFFS:** NIL**Fuel:** NIL**Local Traffic Regulations:**

- a. Traffic shall use Timor Common Freq 127.10MHz
- b. Airport available HJ only
- c. VFR traffic only

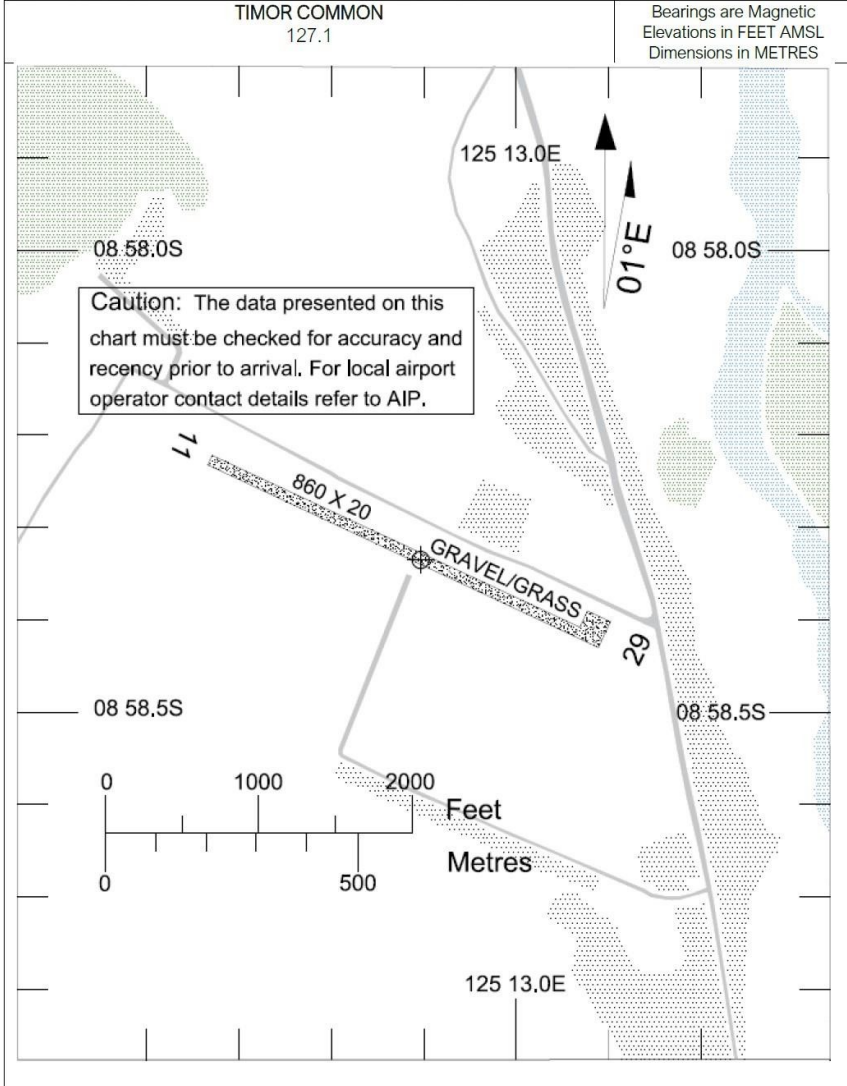
7.1 Maliana Aerodrome Chart

AERODROME
CHART AD 2-6

AD ELEV 700
8 58 20S 125 12 54E
TIMOR COMMON
127.1

MALIANA (WPMN)
TIMOR-LESTE

Bearings are Magnetic
Elevations in FEET AMSL
Dimensions in METRES



25MAR21

AERODROME
CHART AD 2-6

AD ELEV 700
8 58 20S 125 12 54E

MALIANA (WPMN)
TIMOR-LESTE

TIMOR COMMON 127.1		Bearings are Magnetic Elevations in FEET AMSL Dimensions in METRES
RWY	DIRECTION	
11	114°	
29	294°	
<p>NOTES</p> <p>ANIMAL HAZARDS EXIST. AIRPORT AVAILABLE HJ ONLY VFR TRAFFIC ONLY</p>		

25MAR21

INTENTIONALLY BLANK

8 WPOC-OECUSSI

Name: Rota Do Sandalo International Airport Oecussi

- a. ICAO Code: WPOC
- b. IATA Code: OEC
- c. Airport Authority: RAEOA/ZEESM
- d. Flight Approvals: AACTL
 - i. +670 77372679
 - ii. +670 7839131
 - iii. PPR 7 Business Days

ARP: 091158.63S 1242026.80E

Elevation: 14'

Runways:

- a. Asphalt flexible pavement PCN: 120/F/A/W/T
- b. THR 27 Co-Ordinates 091152.27S 1242053.19E
 - i. Elevation: 14'
- c. THR 09 Co-Ordinates 091156.17S 1241941.23E
 - i. Elevation: 14'
- d. RWY Bearing: 266/086°M
- e. Length: 2200m
- f. Width: 45m
- g. Shoulders: 7.5m (asphalt)
- h. RWS: 2440x300m
 - i. Note: Last 75m of RWS are flyover not graded
- i. RESA 27/09: 90x90m (compacted gravel)
- j. CWY 27/09: 300m

Declared Distances:

- a. TORA: 27/09 2200m
- b. TODA: 27/09: 2260m

- c. ASDA: 27/09; 2260m
- d. LDA: 27/09: 2200m

Turning Pads:

- a. Turning nodes approved for Code E with max wheelbase of 25.6m

Taxiways:

- a. Asphalt flexible pavement PCN: 120/F/A/W/T
- b. TWY A width: 23m
- c. TWY B width: 23m
- d. TWY Shoulders: 10.5m (asphalt)

Apron Information:

- a. Rigid concrete, 138x250m
- b. Flexural strength 615.25psi/4.242MPa

Parking Stands:

- a. Remote stands 1A/1B for turboprop aircraft
- b. Stands 2/3 aerobridges for Code C aircraft
- c. Remote stands 4A/B nose in for Code C aircraft
- d. Remote stand 4 nose in for Code E aircraft

Airport Lighting:

- a. SALS
- b. HIRL
- c. RTIL
- d. PAPI
- e. Turn Pads CTR line insets
- f. Taxiway A, B and Apron Taxi Lane
- g. ABN GW

Air Traffic Control:

- a. Primary Freq 122.35MHz

- b. Secondary Freq 133.60 MHz
- c. ATIS 126.80MHz
- d. NOTE: ATC services currently not manned

Navigation Aids:

- a. DVOR/DME: 113.60 MHz/CH83X
- b. 091149.89S 1241950.22E
- c. DVOR unusable as follows:
 - i. Radial 090 CCW 250 beyond 40NM below A030
 - ii. Radial 250 CCW 220 beyond 40NM below A100
 - iii. Radial 220 CCW 190 beyond 40NM below F140
 - iv. Radial 190 CCW 150 beyond 40NM below F130
 - v. Radial 150 CCW 090 beyond 40NM below F150

Standby Power

- a. Available max switchover time 15 seconds
- b. UPS for critical systems max 30 min

ARFFS:

- a. Category 7 provided including ambulance
- b. Pante Macassar City Fire Fighting Station information:
 - i. Contact Number: +670 2530039
 - ii. Person in Charge: Fidelio da Cunha (+670 75833234)
 - iii. Distance: 5 km from Airport
 - iv. Vehicle Operation: 1 vehicle
 - v. Capacity: 5000 ltrs /water
 - vi. Consist of (3 shift operation): 21 personnel

- c. Pante Macassar Regional Hospital information:
 - i. Contact Number: +670 2530027
 - ii. Person in Charge: (+670 78526100) Manuel da Cunha
 - iii. Distance: 6 km from Airport
 - iv. Max available beds: 48

Fuel:

- a. Jet Fuel not available
- b. AVGAS not available

Local Traffic Regulations:

- a. Traffic shall use Timor Common Freq 127.10MHz
- b. Airport available HJ only
- c. VFR traffic only
- d. RWY 27 left hand traffic pattern only
- e. RWY 09 right hand traffic pattern only

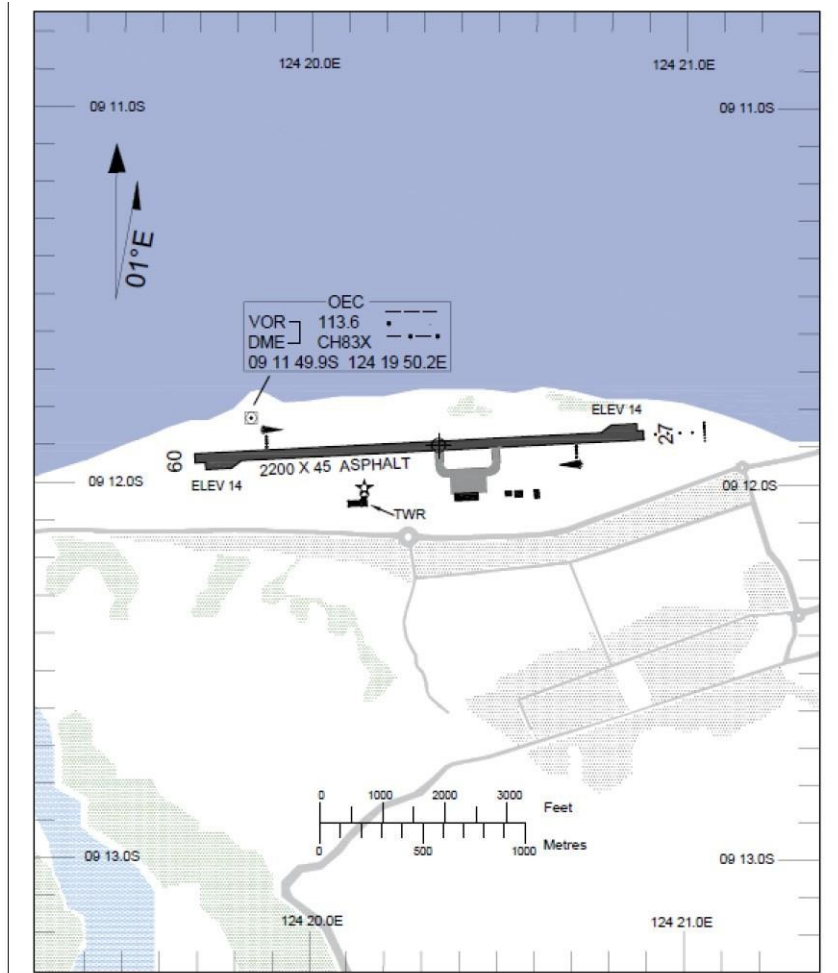
8.1 Oecussi Aerodrome Chart

AERODROME CHART AD 2-7
 AD ELEV 14'
 09 11 54.05S 124 20 20.49E

ROTA DO SANDALO INTL (WPOC)
 OECUSSI, TIMOR-LESTE

AFIS SANDALO INFO 122.35	TIMOR COMMON 127.1
-----------------------------	-----------------------

Bearings are Magnetic
 Elevations in FEET AMSL
 Dimensions in METRES



Changes: CORRECTED DIAGRAM

01DEC22

AERODROME AD ELEV 14'
 CHART AD 2-7 09 11 54.05S 124 20 20.49E

INTL (WPOC)
 OECUSSI, TIMOR-LESTE

AFIS SANDALO INFO 122.35	TIMOR COMMON 127.1	Bearings are Magnetic Elevations in FEET AMSL Dimensions in METRES
-----------------------------	-----------------------	--

RWY	DIRECTION	THR	RWS	BEARING STRENGTH
09	086°	09 11 56.16S	2320 X 300	PCN 120/F/A/W/T
		124 19 41.24E		
27	266°	09 11 52.27S	2320 X 300	PCN 120/F/A/W/T
		124 20 53.18E		

RWY	AERODROME LIGHTING	
09	SALS HIRL RTIL PAPI LEFT SIDE 3°	TWY B ABN GW
27	SALS HIRL RTIL PAPI LEFT SIDE 3°	

NOTES

AIRPORT AVAILABLE HJ ONLY

Changes: Coordinates changed to hundredths

INTENTIONALLY BLANK

9 WPSM-SAME**Name:** Same

- a. ICAO Code: WPSM
- b. Airport Authority: ANATL
- c. Flight Approvals: AACTL
 - i. +670 77372679
 - ii. +670 7839131
 - iii. PPR 7 Business Days

ARP: 090002S 1254102E**Elevation:** 1100'**Runways:**

- a. RWY 18/36
- b. Length: 820m
- c. Grass

Declared Distances: Not available**Airport Lighting:** NIL**Air Traffic Control:** NIL**Navigation Aids:** NIL**ARFFS:** NIL**Fuel:** NIL**Local Traffic Regulations:**

- a. Traffic shall use Timor Common Freq 127.10MHz
- b. Airport available HJ only
- c. VFR traffic only

9.1 Same Aerodrome Chart

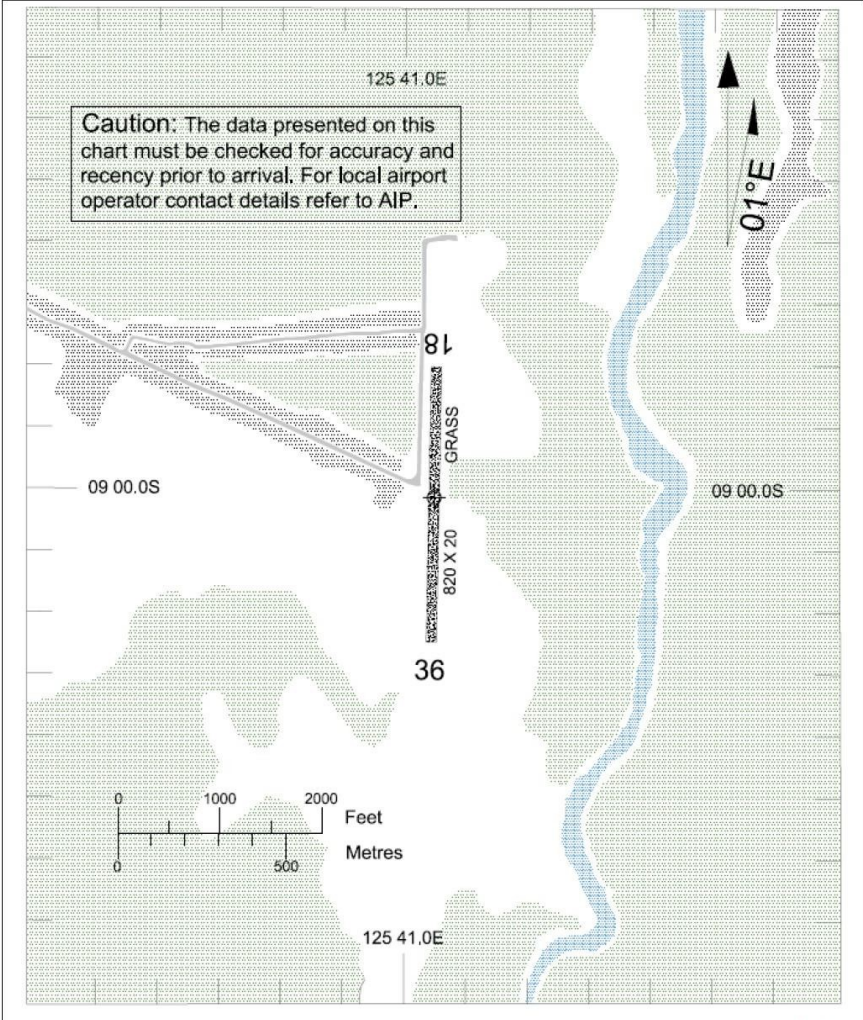
AERODROME
CHART AD 2-8

AD ELEV 1100
09 00 02S 125 41 02E

SAME (WPSM)
TIMOR-LESTE

TIMOR COMMON
127.1

Bearings are Magnetic
Elevations in FEET AMSL
Dimensions in METRES



25MAR21

AERODROME
CHART AD 2-8

AD ELEV 1100
09 00 02S 125 41 02E

**SAME (WPSM)
TIMOR-LESTE**

TIMOR COMMON 127.1		Bearings are Magnetic Elevations in FEET AMSL Dimensions in METRES
RWY	DIRECTION	
18	180°	
36	360°	

NOTES

ANIMAL HAZARDS EXIST.
AIRPORT AVAILABLE HJ ONLY
VFR TRAFFIC ONLY

25MAR21

INTENTIONALLY BLANK

10 WPDB-SUAI**Name:** Xanana Gusmao International Airport Suai

- a. ICAO Code: WPDB
- b. IATA Code: UAI
- c. Airport Authority: ANATL
- d. Flight Approvals: AACTL
 - i. +670 77372679
 - ii. +670 7839131
 - iii. PPR 7 business days

ARP: 091742.68S 1251705.66E**Aerodrome Reference Code:** 3C**Elevation:** 120'**Runways:**

- a. Asphalt
 - i. PCN: 20/F/C/Y/T
- b. THR 35 Co-Ordinates 091826.49S 1251715.54E
 - i. Elevation: 57'
- c. THR 17 Co-Ordinates 091738.87S 1251704.80E
 - i. Elevation: 119'
- d. RWY Bearing: 166°/346°M
- e. Length: 1500m
- f. Width: 30m
- g. Shoulders: NIL
- h. RWS: 1620x150m
- i. RESA: 90x60m
- j. CWY: NIL
- k. Longitudinal slope 1.28%

Declared Distances:

- a. TORA: 17 1500m

- b. TODA: 17 1500m
- c. ASDA: 17 1500m
- d. LDA: NIL 17 Not available for landing
- e. TORA: NIL 35 Not available for take off
- f. TODA: NIL 35 Not available for take off
- g. ASDA: NIL 35 Not available for take off
- h. LDA: 35 1500m

Taxiways:

- a. PCN: 20/F/C/Y/T
- b. TWY width: 15m

Apron Information:

- a. PCN: 20/R/C/Y/T
- b. 297x97m

Airport Lighting:

- a. SALS
- b. MIRL
- c. PAPI RWY 35 ONLY
- d. TWY
- e. ABN

Air Traffic Control:

- a. AFIS: "Kayrala Info" 129.70MHz
- b. Available DLY 2200-0500

Navigation Aids:

- a. VOR/DME: 114.10 MHz/CH88X
- b. 091746.27S 1251713.85E
- c. DVOR unusable as follows:
 - i. Radial 080-260 outside 40NM below A040
 - ii. Radial 030-080 outside 40NM below A100
 - iii. Radial 350-020 outside 40NM below F140

- iv. Radial 270-350 outside 40NM below F150

ARFFS:

- a. Category 5
- b. DLY 2200-0500

Fuel:

- a. Jet Fuel not available
- b. AVGAS not available

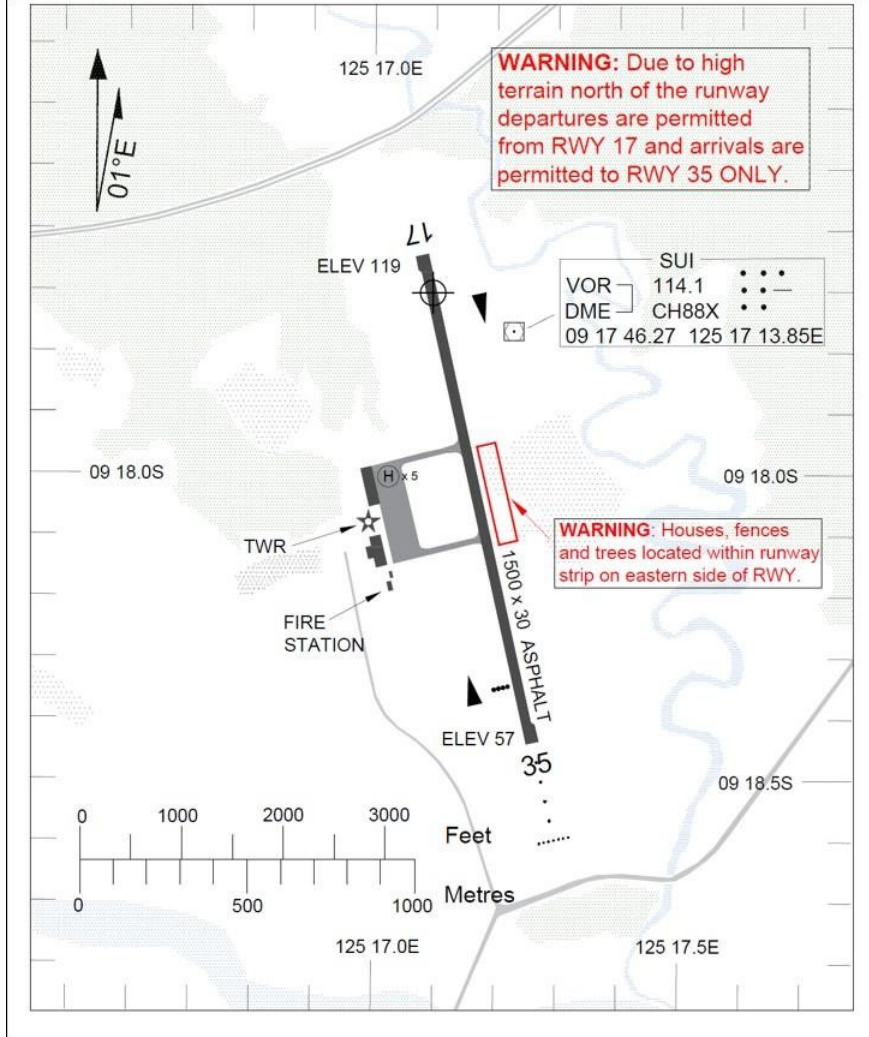
Local Traffic Regulations:

- a. Traffic shall use Timor Common Freq 127.10MHz outside AFIZ hours
- b. Airport available HJ only
- c. VFR traffic only
- d. Except for approved GNSS approach operators
- e. Departures RWY 17 only
- f. Arrivals RWY 35 only

10.1 Suai Aerodrome Chart

AERODROME AD ELEV 120 XANANA GUSMAO INTL (WPDB)
 CHART AD 2-9 9 17 42.68S 125 17 05.66E SUAI, TIMOR-LESTE

<p>AFIZ KAYRALA INFO (2200-0500) 129.7</p>	<p>TIMOR COMMON 127.1 (OUTSIDE AFIZ HRS)</p>	<p>Bearings are Magnetic Elevations in FEET AMSL Dimensions in METRES</p>
---	---	---



Changes: DME CH WARNING SIZE

15 JUN 23

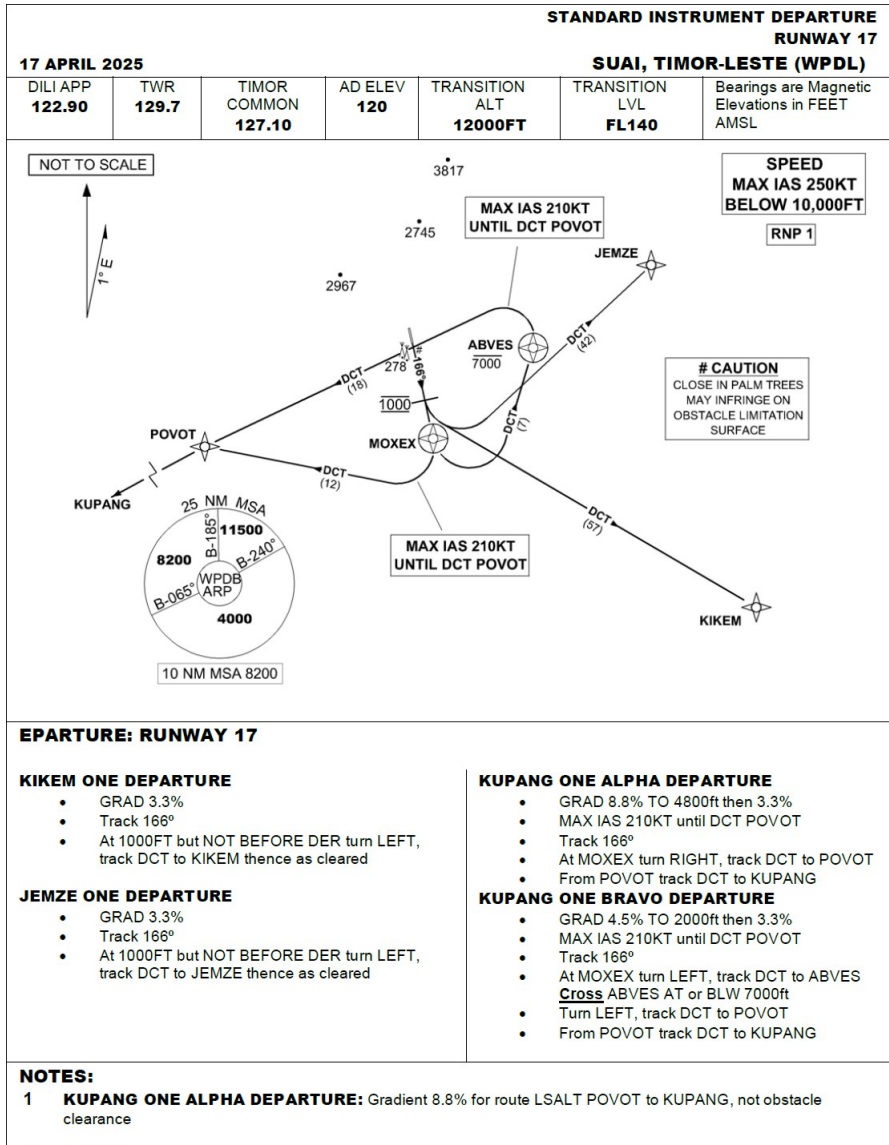
AERODROME AD ELEV 120 XANANA GUSMAO INTL (WPDB)
 CHART AD 2-9 09 17 42.68S 125 17 05.66E SUAI, TIMOR-LESTE

AFIZ KAYRALA INFO (2200-0500) 129.7			TIMOR COMMON 127.1 (OUTSIDE AFIZ HRS)		Bearings are Magnetic Elevations in FEET AMSL Dimensions in METRES
RWY	DIRECTION	THR	RWS	BEARING STRENGTH	
17	166°	09 17 38.87S 125 17 04.80E	1620 X 150	PCN 20/F/C/Y/T	
35	346°	09 18 26.49S 125 17 15.54E			
AERODROME LIGHTING					
17	MIRL		TWY ABN		
35	SALS MIRL PAPI LEFT SIDE 3°				
<p>NOTES</p> <p>PILOTS MUST OVERFLY AD TO OBSERVE PRIOR TO MAKING AN APPROACH IF NOT IN COMMS WITH AFIZ AIRPORT AVAILABLE HJ ONLY LONGITUDINAL SLOPE 1.28%</p>					

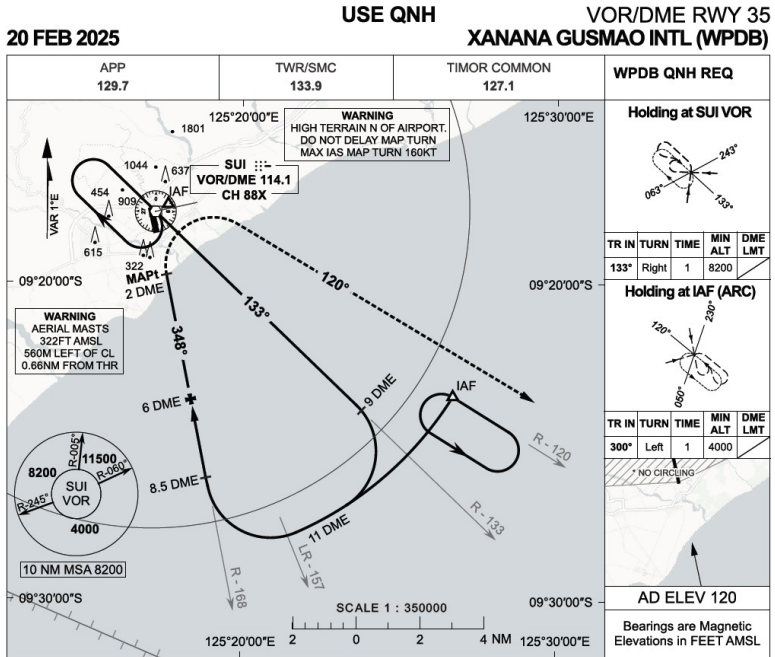
Changes: Longitudinal slope

01DEC22

10.2 Suai RWY 17 Departures Chart



10.3 Suai RWY 35 VOR/DME Chart



NM TO SUI DME	2.4	3	3.1	4	5	6	7	8	8.5	9
ALT (3° APCH PATH)	660	850	870	1170	1490	1810	2130	2440	2600	2760

MISSED APPROACH
TURN RIGHT, TRACK 120°. CLIMB TO 4000FT

TH 50FT THR ELEV 57 FT	2.0	6.0	8.5	11.0
	MDA 870	1810	2600	4000
		348°	348°	3°

NOTES

CATEGORY	A	B	C	D
S - I (2.5% MAP)		870 (813-4.3)		NOT APPLICABLE
S - I (4.0% MAP)		660 (603-3.1)		
CIRCLING*	870 (750-2.0)	910 (790-2.4)	1010 (890-4.0)	

1. MAX IAS :
MAP TURN : 160KT
2. PROC AVBL HJ ONLY.
3.*NO CIRCLING N OF RWY35 THR

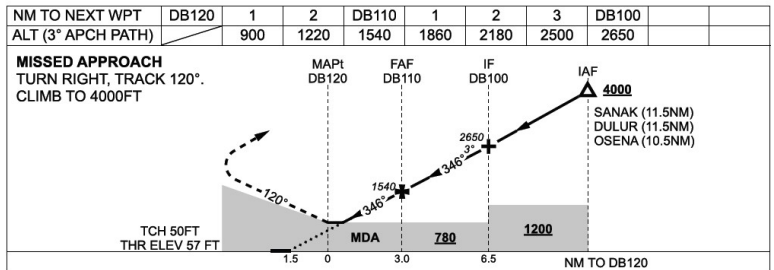
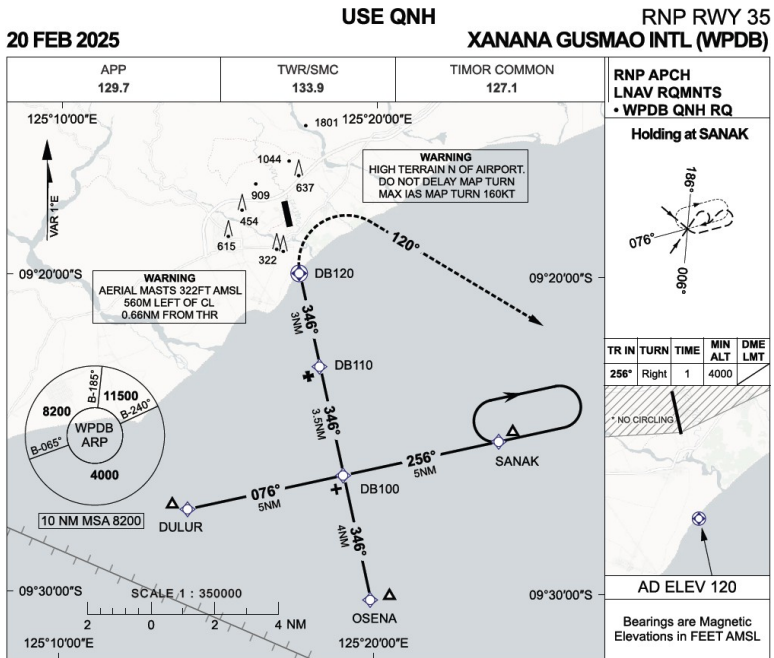
Changes: NEW CHART

© Civil Aviation Authority of Timor-Leste



10.4

Suai RWY 35 RNP



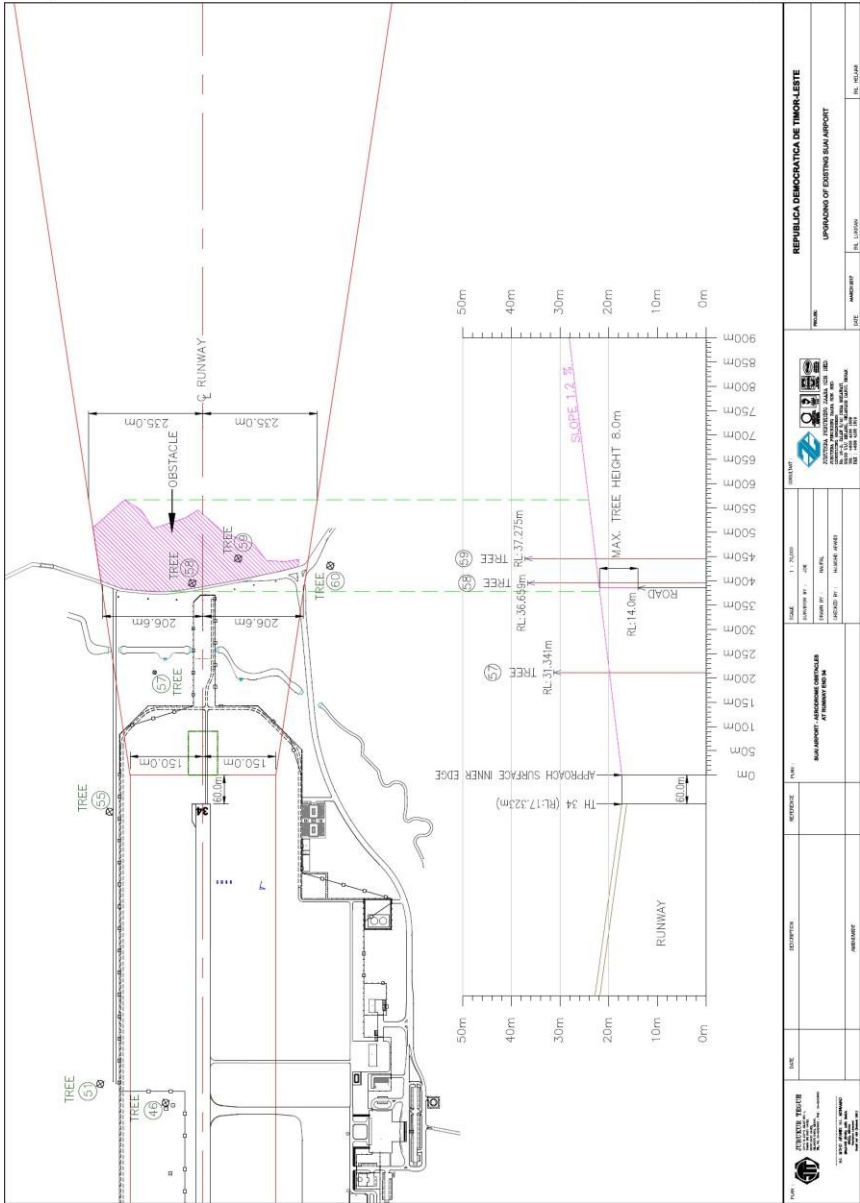
NOTES

CATEGORY	A	B	C	D
LNAV (2.5% MAP)		780 (723-3.8)		NOT APPLICABLE
LNAV (4.0% MAP)		600 (543-2.8)		
CIRCLING*	780 (660-2.0)	910 (790-2.4)	1010 (890-4.0)	

1. MAX IAS : 200KT
INITIAL MAP TURN : 160KT
2. PROC AVBL HU ONLY.
3. NO CIRCLING N OF RWY35 THR

Changes: NEW CHART

10.5 Suai Type A Chart



<p>REPÚBLICA DEMOCRÁTICA DE TIMOR-LESTE UPGRADING OF SUAI AIRPORT</p>	PROJECT: SUAI AIRPORT DRAWING NO: 10.5 DATE: 11 June 2026
	DRAWN BY: [Name] CHECKED BY: [Name] APPROVED BY: [Name]
PROJECT: SUAI AIRPORT DRAWING NO: 10.5 DATE: 11 June 2026	DRAWN BY: [Name] CHECKED BY: [Name] APPROVED BY: [Name]

INTENTIONALLY BLANK

11 WPVQ-VIQUEQUE**Name:** Viqueque

- a. ICAO Code: WPVQ
- b. Airport Authority: ANATL
- c. Flight Approvals: AACTL
 - i. +670 77372679
 - ii. +670 7839131
 - iii. PPR 7 Business Days

ARP: 085300S 1262223E**Elevation:** 100'**Runways:**

- a. RWY 15/33
- b. Length: 960m
- c. Gravel

Declared Distances: Not available**Airport Lighting:** NIL**Air Traffic Control:** NIL**Navigation Aids:** NIL**ARFFS:** NIL**Fuel:** NIL**Local Traffic Regulations:**

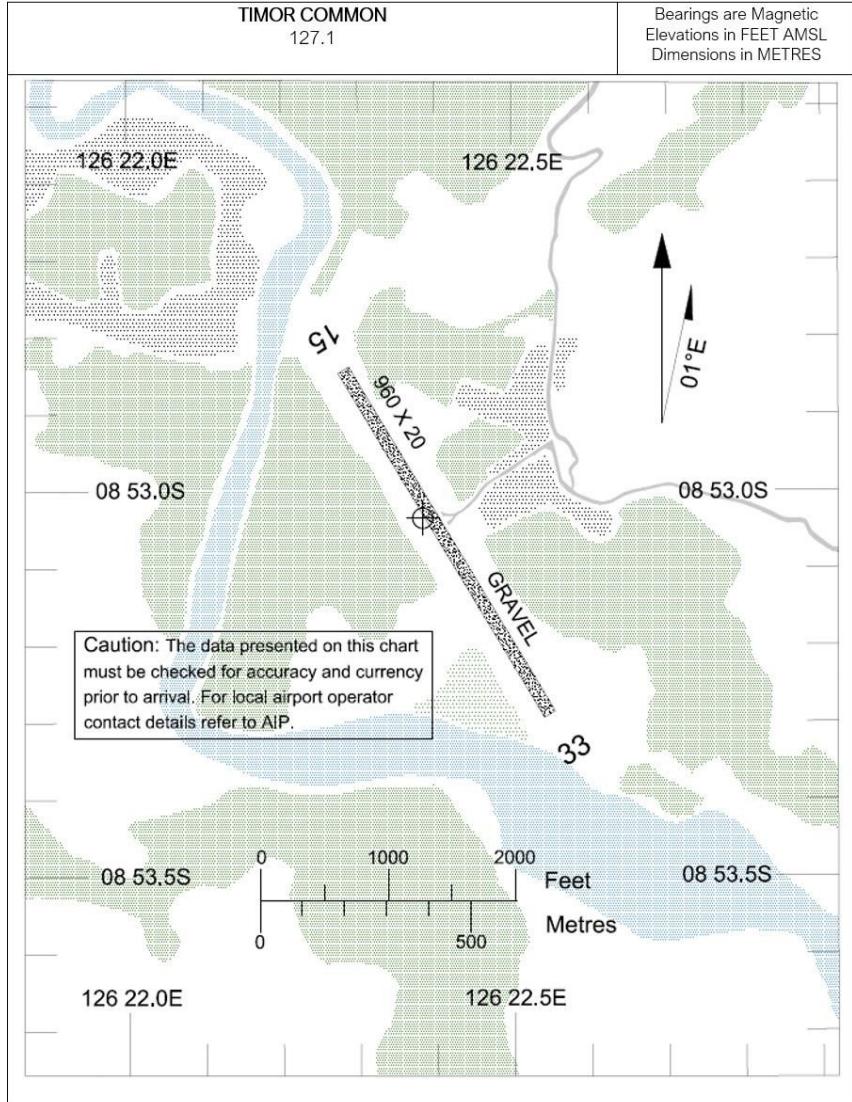
- a. Traffic shall use Timor Common Freq 127.10MHz
- b. Airport available HJ only
- c. VFR traffic only
- d. RWY 15 right hand traffic pattern only
- e. RWY 33 left hand traffic pattern only
- f. RWY 15 THR displaced 250m due obstacles, not marked

11.1 Viqueque Aerodrome Chart

AERODROME
CHART AD 2-10

AD ELEV 100
08 53 00S 126 22 23E

VIQUEQUE (WPVQ)
TIMOR-LESTE



25MAR21

AERODROME
CHART AD 2-10

AD ELEV 100
08 53 00S 126 22 23E

VIQUEQUE (WPVQ)
TIMOR-LESTE

TIMOR COMMON 127.1		Bearings are Magnetic Elevations in FEET AMSL Dimensions in METRES
RWY	DIRECTION	
15	148°	
33	328°	

NOTES

ANIMAL HAZARDS EXIST.
RWY CONDITION DETERIORATES AFTER HEAVY RAIN.
AIRPORT AVAILABLE HJ ONLY.
VFR TRAFFIC ONLY.

25MAR21

AD 3

HELIPORTS

AD 3.1 HELIPORT LOCATION INDICATOR AND NAME

1 RESERVED

See [AD 1.3](#).

INTENTIONALLY BLANK