



**AIRAC AIP
SUPPLEMENT
(SUP)**

AIP SUP 02/2025

Email: cnoronha@aactl.gov.tl

DATE: 21 JAN 2025

NEW INSTRUMENT FLIGHT PROCEDURES FOR SUAI AIRPORT (WPDB)

1 INTRODUCTION

- 1.1 This AIRAC SUP describes new Instrument Flight Procedures (IFP) being introduced for Suai Airport.

2 BACKGROUND

- 2.1 The existing flight procedures at Suai will be withdrawn from service and new procedures published.
- 2.2 Existing procedures at Suai will be withdrawn by NOTAM.
- 2.3 This AIP SUP replaces AIP SUP 01/25 which included several minor errors.

3 NEW PROCEDURES

- 3.1 The following new procedures are detailed in this AIP SUP:

- RNP RWY 35 Dated 20th February 2025
- VOR/DME RWY 35 Dated 20th February 2025

4 IFP FLIGHT VALIDATION

- 4.1 Flight validation of these IFPs is scheduled to occur shortly, this may necessitate minor changes to these IFPs or effective date.
- 4.2 Any changes will be advised by NOTAM or amended AIP SUP.

5 RNP RWY 35

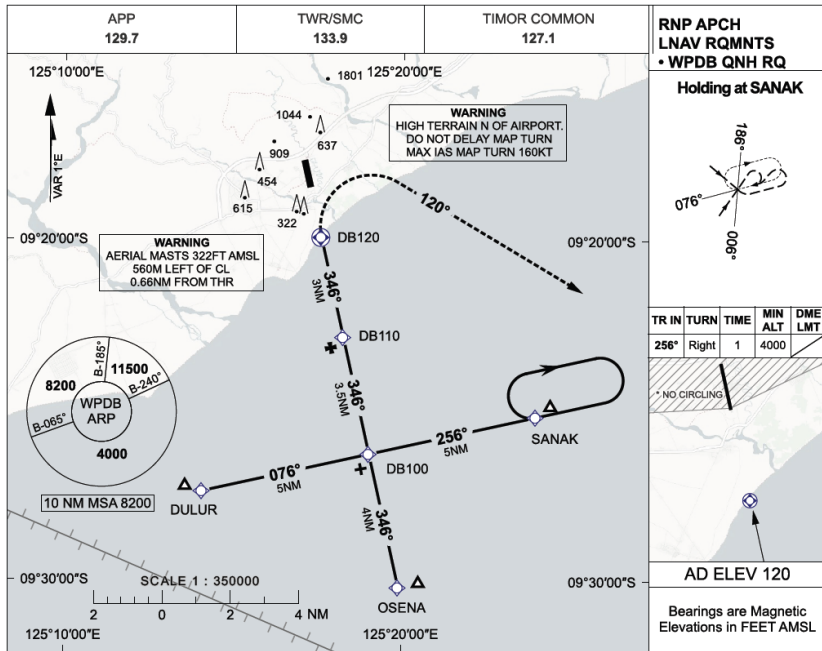
5.1 Waypoint Data

| Waypoint Name Type) | (Fix | Co-ordinates |
|------------------------|-------|--------------------------------------|
| OSENA (S) (IAF) | | S09°30'12.3486" E125°19' 54.8035" |
| DULUR (W) (IAF) | | S09°27'22.9194" E125°14' 05.4882" |
| SANAK (E) (IAF) | | S09°25'11.1379" E125°23' 57.8920" |
| DB100 (IF) | | S09°26'17.0633" E125°19' 01.7058" |
| DB110 | (FAF) | S09°22'51.1878" E125°18' 15.2540" |
| DB120 (MAPt) | | S09°19'54.7230" E125°17' 35.4419" |

5.2 Coding Data

| Waypoint Name | Fix Type | Path Terminator | Flyover (Y/N) | Course (°T) | Mag Var (E/W) | Distance (NM/M) | Turn Direction (L/R) | Altitude (FT) | Speed (KT) | VPA (°) | TCH (FT) | Nav Spec |
|---------------|----------|-----------------|---------------|-------------|---------------|-----------------|----------------------|---------------|------------|---------|----------|----------|
| SANAK (IAF E) | IAF | IF | N | – | 1.68E | – | – | +4000 | – | – | – | RNP 1 |
| IAF (E) | IAF | HM | N | 257.37 | 1.68E | – | R | +4000 | -250 | – | – | RNP 1 |
| IAF (E) | IAF | IF | N | – | 1.68E | – | – | +4000 | -200 | – | – | RNP APCH |
| DB100 | IF | TF | N | 257.37 | 1.68E | 5.0/9262 | R | +2650 | -200 | 2.90 | – | RNP APCH |
| OSENA (IAF S) | IAF | IF | N | – | 1.68E | – | – | – | – | – | – | RNP APCH |
| DB100 | IF | TF | N | 347.37 | 1.68E | 4.0/7410 | – | +2650 | -200 | 3.45 | – | RNP APCH |
| DULUR (IAF W) | IAF | IF | N | – | 1.68E | – | – | – | – | – | – | RNP APCH |
| DB100 | IF | TF | N | 077.37 | 1.68E | 5.0/9260 | L | +2650 | -200 | 2.90 | – | RNP APCH |
| DB100 | IF | – | N | – | 1.68E | – | – | +2650 | – | – | – | RNP APCH |
| DB110 | FAF | TF | N | 347.37 | 1.68E | 3.5/6484 | – | +1540 | -160 | 3.00 | – | RNP APCH |
| DB120 | MAPt | DF | Y | 347.37 | 1.68E | 3.0/5557 | – | +590 | -160 | 3.00 | 50 | RNP APCH |
| – | – | CA | – | 121.68 | 1.68E | – | R | +4000 | -160 | – | – | – |

20 FEB 2025 **USE QNH** RNP Rwy 35
XANANA GUSMAO INTL (WPDB)



| NM TO NEXT WPT | DB120 | 1 | 2 | DB110 | 1 | 2 | 3 | DB100 | | |
|--------------------|-------|------|------|-------|------|------|------|-------|--|--|
| ALT (3° APCH PATH) | 900 | 1220 | 1540 | 1860 | 2180 | 2500 | 2650 | | | |

| MAPt | FAF | IF | IAF |
|-------|-------|-------|-----|
| DB120 | DB110 | DB100 | |

MISSED APPROACH
 TURN RIGHT, TRACK 120°. CLIMB TO 4000FT

NOTES

| CATEGORY | A | B | C | D |
|-----------------|---------------|---------------|----------------|----------------|
| LNAV (2.5% MAP) | | 780 (723-3.8) | | NOT APPLICABLE |
| LNAV (4.0% MAP) | | 600 (543-2.8) | | |
| CIRCLING* | 780 (660-2.0) | 910 (790-2.4) | 1010 (890-4.0) | |

1. MAX IAS : INITIAL : 200KT
 MAP TURN : 160KT
 2. PROC AVBL HU ONLY.
 3. NO CIRCLING N OF RWY35 THR

Changes: NEW CHART

© Civil Aviation Authority of Timor-Leste



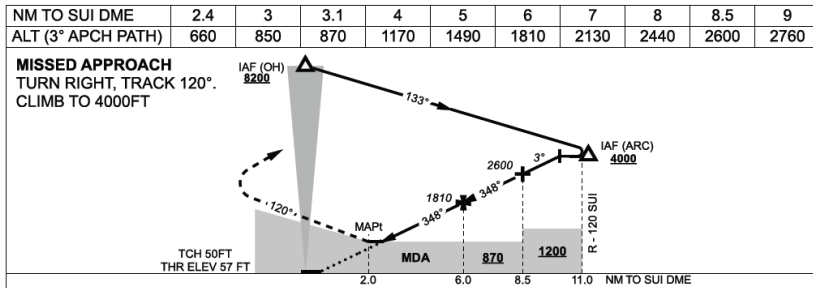
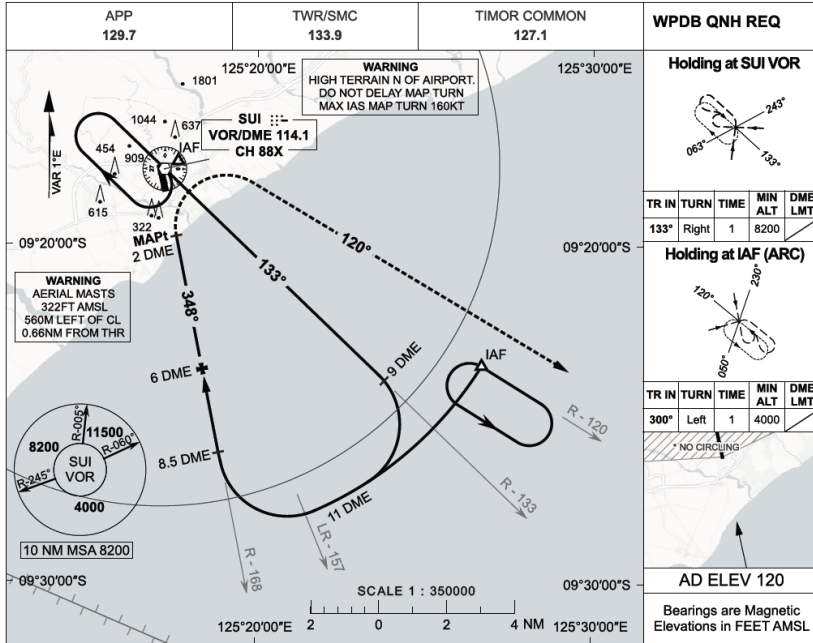
6 VOR/DME RWY 35**6.1 Fix Coordinates**

| Name (Fix Type) | Co-ordinates |
|----------------------------|-----------------------------------|
| IAF (VOR) (IAF) | S09°17' 46.27" E125°17' 13.85" |
| IAF (Arc) (IAF) | S09°23' 34.38" E125°26' 42.07" |
| IF | S09°26' 09.27" E125°18' 52.32" |
| FAF | S09°23' 41.30" E125°18' 23.34" |
| MAPt | S09°19' 44.91" E125°17' 35.16" |

20 FEB 2025

USE QNH

VOR/DME RWY 35
XANANA GUSMAO INTL (WPDB)



| CATEGORY | A | B | C | D |
|------------------|---------------|---------------|----------------|----------------|
| S - 1 (2.5% MAP) | | 870 (813-4.3) | | NOT APPLICABLE |
| S - 1 (4.0% MAP) | | 660 (603-3.1) | | |
| CIRCLING* | 870 (750-2.0) | 910 (790-2.4) | 1010 (890-4.0) | |

NOTES

1. MAX IAS : 160KTS
2. PROC AVBL HJ ONLY.
3. *NO CIRCLING N OF RWY35 THR

Changes: NEW CHART

© Civil Aviation Authority of Timor-Leste



7 EFFECTIVE DATE

The changes in this SUP become effective on AIRAC 2502, 2502191500 UTC.

8 CANCELLATION

8.1 This AIRAC SUP replaces AIP SUP 01/25 and will self-cancel when incorporated in AIP.

9 DISTRIBUTION

9.1 [AACTL website](#) only.