



**AIRAC AIP
SUPPLEMENT
(SUP)**

AIP SUP 01/2025

Email: cnoronha@aactl.gov.tl

DATE: 09 JAN 2025

NEW INSTRUMENT FLIGHT PROCEDURES FOR SUAI AIRPORT (WPDB)

1 INTRODUCTION

- 1.1 This AIRAC SUP describes new Instrument Flight Procedures (IFP) being introduced for Suai Airport.

2 BACKGROUND

- 2.1 The existing flight procedures at Suai will be withdrawn from service and new procedures published.

3 NEW PROCEDURES

- 3.1 The following new procedures are detailed in this AIP SUP:
- RNP RWY 35 Dated 20th February 2025
 - VOR/DME RWY 35 Dated 20th February 2025

4 IFP FLIGHT VALIDATION

- 4.1 Flight validation of these IFPs is scheduled to occur shortly, this may necessitate minor changes to these IFPs or effective date.

4.2 Any changes will be advised by NOTAM or amended AIP SUP.

5 RNP RWY 35

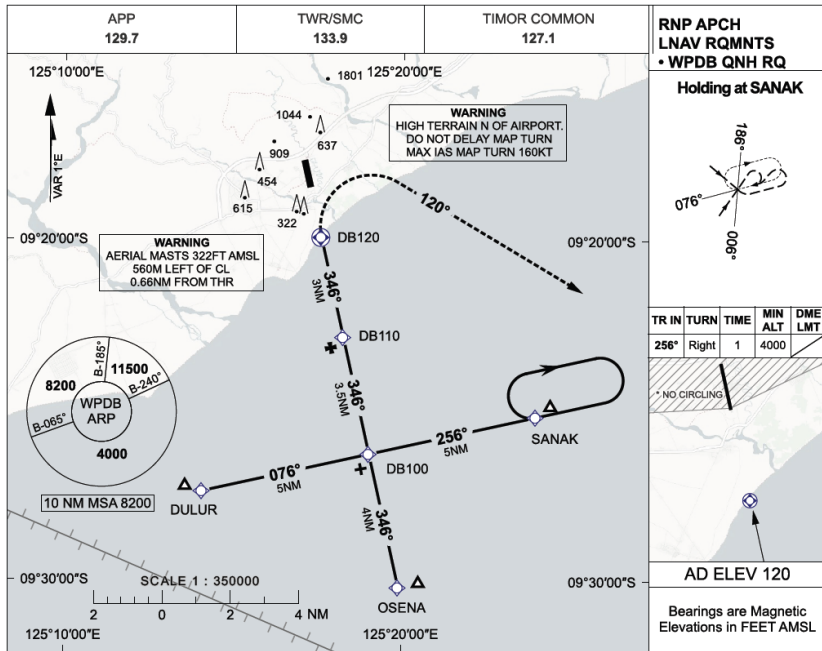
5.1 Waypoint Data

Waypoint Name Type)	(Fix	Co-ordinates
OSENA (S) (IAF)		S09°30'12.3486" E125°19'54.8035"
DULUR (W) (IAF)		S09°27'22.9194" E125°14'05.4882"
SANAK (E) (IAF)		S09°25'11.1379" E125°23'57.8920"
DB100 (IF)		S09°26'17.0633" E125°19'01.7058"
DB110	(FAF)	S09°22'51.1878" E125°18'15.2540"
DB120 (MAPt)		S09°19'54.7230" E125°17'35.4419"

5.2 Coding Data

Waypoint Name	Fix Type	Path Terminator	Flyover (Y/N)	Course (°T)	Mag Var (E/W)	Distance (NM/M)	Turn Direction (L/R)	Altitude (FT)	Speed (KT)	VPA (°)	TCH (FT)	Nav Spec
SANAK (IAF E)	IAF	IF	N	–	1.68E	–	–	+4000	–	–	–	RNP 1
IAF (E)	IAF	HM	N	257.37	1.68E	–	R	+4000	-250	–	–	RNP 1
IAF (E)	IAF	IF	N	–	1.68E	–	–	+4000	-200	–	–	RNP APCH
DB100	IF	TF	N	257.37	1.68E	5.0/9262	R	+2650	-200	2.90	–	RNP APCH
OSENA (IAF S)	IAF	IF	N	–	1.68E	–	–	–	–	–	–	RNP APCH
DB100	IF	TF	N	347.37	1.68E	4.0/7410	–	+2650	-200	3.45	–	RNP APCH
DULUR (IAF W)	IAF	IF	N	–	1.68E	–	–	–	–	–	–	RNP APCH
DB100	IF	TF	N	077.37	1.68E	5.0/9260	L	+2650	-200	2.90	–	RNP APCH
DB100	IF	–	N	–	1.68E	–	–	+2650	–	–	–	RNP APCH
DB110	FAF	TF	N	347.37	1.68E	3.5/6484	–	+1540	-160	3.00	–	RNP APCH
DB120	MAPt	DF	Y	347.37	1.68E	3.0/5557	–	+590	-160	3.00	50	RNP APCH
–	–	CA	–	121.68	1.68E	–	R	+4000	-160	–	–	–

20 FEB 2025 **USE QNH** **RNP Rwy 35**
XANANA GUSMAO INTL (WPDB)



RNP APCH
LNAV RQMNTS
• WPDB QNH RQ

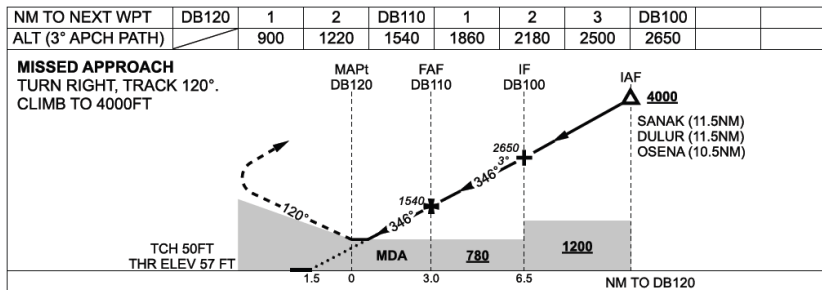
Holding at SANAK

TR	IN	TURN	TIME	MIN ALT	DME LMT
256°	Right	1	1	4000	

* NO CIRCLING

AD ELEV 120

Bearings are Magnetic Elevations in FEET AMSL



NOTES

CATEGORY	A	B	C	D
LNAV (2.5% MAP)		780 (723-3.8)		NOT APPLICABLE
LNAV (4.0% MAP)		600 (543-2.8)		
CIRCLING*	780 (660-2.0)	910 (790-2.4)	1010 (890-4.0)	

1. MAX IAS : INITIAL : 200KT MAP TURN : 160KT
 2. PROC AVBL HU ONLY.
 3. NO CIRCLING N OF RWY35 THR

Changes: NEW CHART



6 VOR/DME RWY 35**6.1 Fix Coordinates**

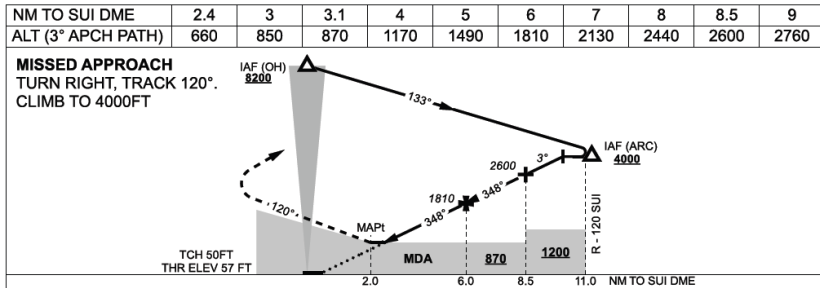
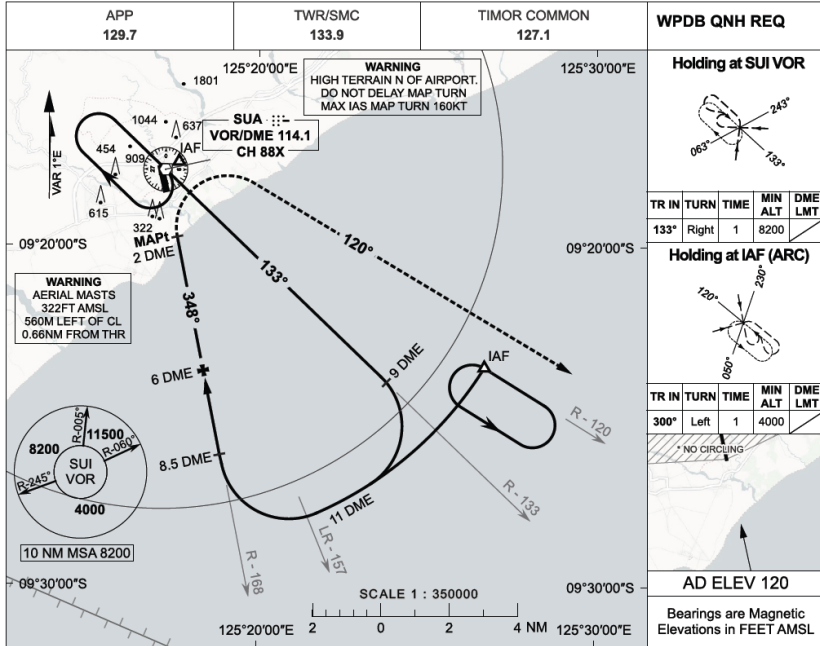
Name (Fix Type)	Co-ordinates
IAF (VOR) (IAF)	S09°17' 46.27" E125°17' 13.85"
IAF (Arc) (IAF)	S09°23' 34.38" E125°26' 42.07"
IF	S09°26' 09.27" E125°18' 52.32"
FAF	S09°23' 41.30" E125°18' 23.34"
MAPt	S09°19' 44.91" E125°17' 35.16"

USE QNH

VOR RWY 35

20 FEB 2025

XANANA GUSMAO INTL (WPDB)



NOTES

CATEGORY	A	B	C	D
S - I (2.5% MAP)		870 (813-4.3)		NOT APPLICABLE
S - I (4.0% MAP)		660 (603-3.1)		
CIRCLING*	870 (750-2.0)	910 (790-2.4)	1010 (890-4.0)	

1. MAX IAS : MAP TURN : 160KT
2. PROC AVBL HJ ONLY.
- 3.*NO CIRCLING N OF RWY35 THR

Changes: NEW CHART

© Civil Aviation Authority of Timor-Leste



7 EFFECTIVE DATE

The changes in this SUP become effective on AIRAC 2502, 2502191500 UTC.

8 CANCELLATION

8.1 This AIRAC SUP will self-cancel when incorporated in AIP.

9 DISTRIBUTION

9.1 [AACTL website](#) only.