



**AIRAC AIP
SUPPLEMENT
(SUP)**

AIP SUP 02/2023

Email: cnoronha@aactl.gov.tl

DATE: 18 SEP 2023

AIRSPACE CHANGES IN TIMOR-LESTE

1 INTRODUCTION

- 1.1 This AIRAC SUP describes changes being made to Timor-Leste airspace WEF 30th November 2023 (AIRAC 2312). These changes introduce modifications to dimensions of existing Class C and G airspace within 25NM of DIL VOR.

2 BACKGROUND

- 2.1 The current Timor-Leste airspace architecture has been in place since 16th June 2022. In the period since its introduction, identification has been made to changes that can be introduced to benefit both ATC and industry. The changes only affect Class C and G airspace within 25NM of DIL VOR. These changes are detailed below. This SUP corrects an error in AIRAC SUP 01/2023.

3 EXISTING AIRSPACE

3.1 There is now change to existing airspace outside of 25NM DIL VOR.

4 AIRSPACE FROM 30TH NOVEMBER 2023

4.1 Dili CTR (no change)

- Vertical Limits
 - SFC-A015
- Lateral Dimensions
 - 083611.2S 1252534.7E then along a clockwise arc of a circle radius 7.0 NM centre 083238.2S 1253139.8E (DIL/VOR) – 083312.6S 1253842.0E - 083611.2S 1252534.7E

4.2 Dili CTA C1 Class C

- Vertical Limits
 - A015-A045
- Lateral Dimensions
 - A circle of radius 12.00NM centre 083238.2S 1253139.8E (DIL/VOR)
- Hours of Activation
 - 2130-0900 Daily

4.3 CTA C2 Class C

- Vertical Limits
 - A025-A045
- Lateral Dimensions
 - 081434.8S 1253159.8E (DIL306R18DME) then counter clockwise a circle of radius

18.00NM centre 083238.2S 1253139.8E
(DIL/VOR) to 084358.8S 1251732.7E
(DIL230R18DME) then a straight line to
084012.00S 1252215.2E (DIL230R12DME)
then clockwise a circle of radius 12NM centre
083238.2S 1253139.8E (DIL/VOR) to
082035.9S 1253153.2E (DIL360R12DME)

- Hours of Activation
 - 2130-0900 Daily

4.4 CTA C3 Class C

- Vertical Limits
 - A025-A045
- Lateral Dimensions
 - 081709.8S 1254101.0E (DIL030R18DME)
then clockwise a circle of radius 18.00NM
centre 083238.2S 1253139.8E (DIL/VOR) to
085041.6S 1253119.4E (DIL180R18DME)
then a straight line to 084440.4S 1253126.3E
(DIL180R12DME) then counter clockwise a
circle of radius 12NM centre 083238.2S
1253139.8E (DIL/VOR) to 082219.3S
1253754.0E (DIL030R12DME)
- Hours of Activation
 - 2130-0900 Daily

4.5 CTA C4 Class C

- Vertical Limits
 - A035-A045
- Lateral Dimensions

- Between 081709.8S 1254101.0E (DIL030R18DME) then clockwise a circle of radius 18.00NM centre 083238.2S 1253139.8E (DIL/VOR) to 085041.6S 1253119.4E (DIL180R18DME) then a straight line to 084440.4S 1253126.3E (DIL180R12DME) then clockwise a circle of radius 12NM centre 083238.2S 1253139.8E (DIL/VOR) to 084012.0S 1252215.2E (DIL230R12DME) then a straight line to 084358.8S 1251732.7E (DIL230R18DME) then clockwise a circle of radius 18.00NM centre 083238.2S 1253139.8E (DIL/VOR) to 081434.8S 1253159.8E (DIL360R18DME) then a straight line to 082035.9S 1253153.2E (DIL360R12DME) then clockwise a circle of radius 12.00NM centre 083238.2S 1253139.8E (DIL/VOR) to 082219.3S 1253754.0E (DIL030R12DME) then a straight line to 081709.8S 1254101.0E (DIL030R18DME)

- Hours of Activation
 - 2130-0900 Daily

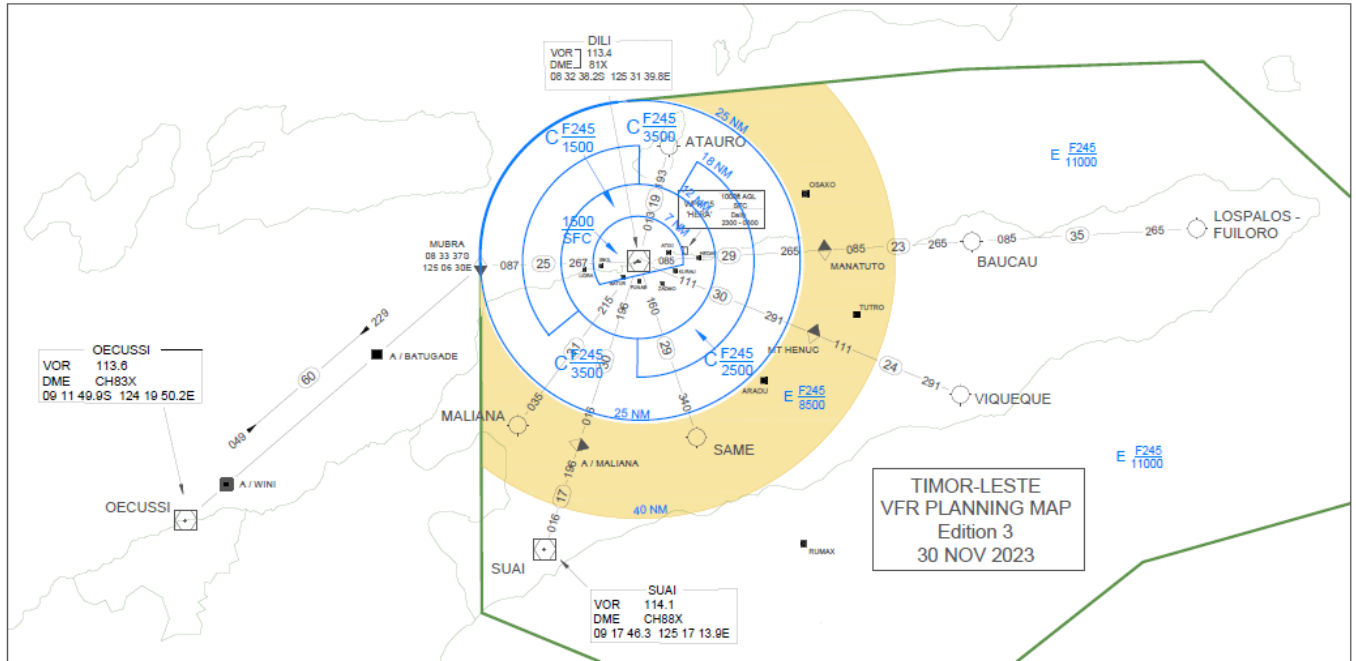
4.6 CTA C5 Class C

- Vertical Limits
 - A045-F245
- Lateral Dimensions
 - A circle of radius 25.00NM centre 083238.2S 1253139.8E (DIL/VOR)
- Hours of Activation

- 2130-0900 Daily
- 4.7 Class G within 25NM DIL VOR
 - Vertical Limits
 - SFC-Base of overlying Class C
 - Lateral Dimensions
 - A circle of radius 25.00NM centre 083238.2S 1253139.8E (DIL/VOR)
 - Excluding Dili CTR lateral dimensions when active
 - Hours of Activation
 - H24

5 CHARTS

- 5.1 The updated IFR and VFR Planning Charts are shown below:



6 EFFECTIVE DATE

6.1 The changes in this SUP become effective on AIRAC 2312, 2311301530 UTC.

7 CANCELLATION

7.1 This AIRAC SUP replaces AIRAC SUP 01/2023 and will self-cancel on 2311301530 when incorporated in AIP Edition 7.

8 DISTRIBUTION

8.1 [AACTL website](#) only.