



AERONAUTICAL INFORMATION PUBLICATION TIMOR-LESTE Part 3

Edition 4

**CONSULT NOTAM AND AIP SUPPLEMENT
FOR LATEST INFORMATION**

This publication is copyright. Unless specified otherwise, you may use this publication only for information purposes. Except as permitted by the Timor-Leste Law, no part of this publication may be reproduced, stored in a retrieval system, transmitted, redistributed, republished or commercially exploited in any way without the prior written permission of AACTL.

If you wish to use any part of this publication in any way not permitted by this notice contact AACTL regarding a licence.

**Copyright © AACTL 2022
All rights reserved worldwide**

INTENTIONALLY BLANK

PART 3 – AERODROMES (AD)

AD 0

AD 0.1 PREFACE

1 NAME OF PUBLISHING AUTHORITY

- 1.1 The AIP is published under the authority of the Civil Aviation Authority of Timor-Leste (AACTL), Ministry of Transport and Communications Timor-Leste.

2 APPLICABLE ICAO DOCUMENTS

- 2.1 The AIP is prepared in accordance with the Standards and Recommended practices (SARPs) from the following ICAO Documents:
1. Annex 15 Aeronautical Information Services
 2. Annex 4 Aeronautical Charts
 3. Doc 8126 Aeronautical Information Services Manual
 4. Doc 8697 Aeronautical Chart Manual

3 AIP TIMOR-LESTE STRUCTURE

3.1 The AIP Structure

- 3.1.1 The AIP is made up of three Parts, being Part 1-General (GEN), Part 2.-Enroute (ENR) and Part 3-Aerodromes (AD). Each Part consists of sections and subsections. The AIP Structure is shown in graphic form at page 1-5.

3.2 Part 1 – General (GEN)

- 3.2.1 Part 1 consists of five sections. These sections are described below.

3.2.2 GEN 0 Preface

Preface, Record of AIP Amendments, Record of AIP SUPs, Checklist of AIP pages, List of Hand Amendments to the AIP and the table of Contents to Part 1.

3.2.3 GEN 1 National Regulations and Requirements

Designated authorities, Entry, transit and departure of aircraft, Entry transit and departure of cargo, Aircraft instruments, equipment and documents, Summary of national regulation and international agreements/conventions and differences from ICAO SARPs.

3.2.4 GEN 2 Tables and Codes

Measuring system, Aircraft markings, Holidays, Abbreviations, Chart symbols, Location indicators, List of radio navigation aids, Conversion tables, and Sunrise/sunset information.

3.2.5 GEN 3 Services

Aeronautical Information Service, Aeronautical Charts, Air Traffic Services, Communication Service, Meteorological Services and Search and Rescue Services.

3.2.6 GEN 4 Charges for Aerodromes/Heliports and Air Navigation Services

Aerodrome and helicopter charges/and Air Navigation Service charges.

3.3 Part 2 – Enroute (ENR)

3.3.1 Part 2 consists of seven sections. The sections are described below.

3.3.2 ENR 0 Preface

Record of AIP Amendments, Record of AIP SUPs Checklist of AIP pages, List of hand amendments to the AIP and the Table of contents to Part 2.

3.3.3 ENR 1 General Rules and Procedures

General rules, Visual flight rules, instrument flight rules, ATS airspace classification, Holding approach and departure procedures, Radar service and procedures, Altimeter Setting procedures, regional supplementary procedures, Air traffic flow management, Flight plan messages, interception of civil aircraft, and Air traffic incidents.

3.3.4 ENR 2 Air Traffic Service Airspace

Detailed description of Timor-Leste airspace and other regulated airspace.

3.3.5 ENR 3 ATS Routes

Detailed description of lower ATS routes and helicopter routings.

3.3.6 ENR 4 Radio Navigation Aids/Systems

Radio navigation aids-enroute, Special navigation systems, Name-code designators for significant points, and Aeronautical ground lights-en-route.

3.3.7 ENR 5 Navigation Warnings

Prohibited, restricted and danger areas, Military exercise and training areas and Air Defence Identification Zone (ADIZ), other activities of a dangerous nature and other potential hazards, Air navigation obstacles and bird migration areas with sensitive fauna.

3.3.8 ENR 6 En-Route Charts

En-route Charts, ICAO and index charts.

3.4 Part 3- Aerodromes (AD)

3.4.1 Part 3 consists of four sections. The sections are described below.

3.4.2 AD O Preface

Record of AIP Amendments, Record of AIP SUPs, Checklist of AIP pages, List of hand amendments to the AIP and the Table of Contents to Part 3.

3.4.3 AD 1 Aerodromes/Heliports – Introduction

Aerodrome/heliport availability, rescue and fire-fighting services, Index to aerodromes and heliports, Grouping of aerodromes and heliports and Handling services providers.

3.4.4 AD 2 Aerodromes

Detailed information on aerodromes including helicopter-landing areas, if located at the aerodromes.

3.4.5 AD 3 Heliports

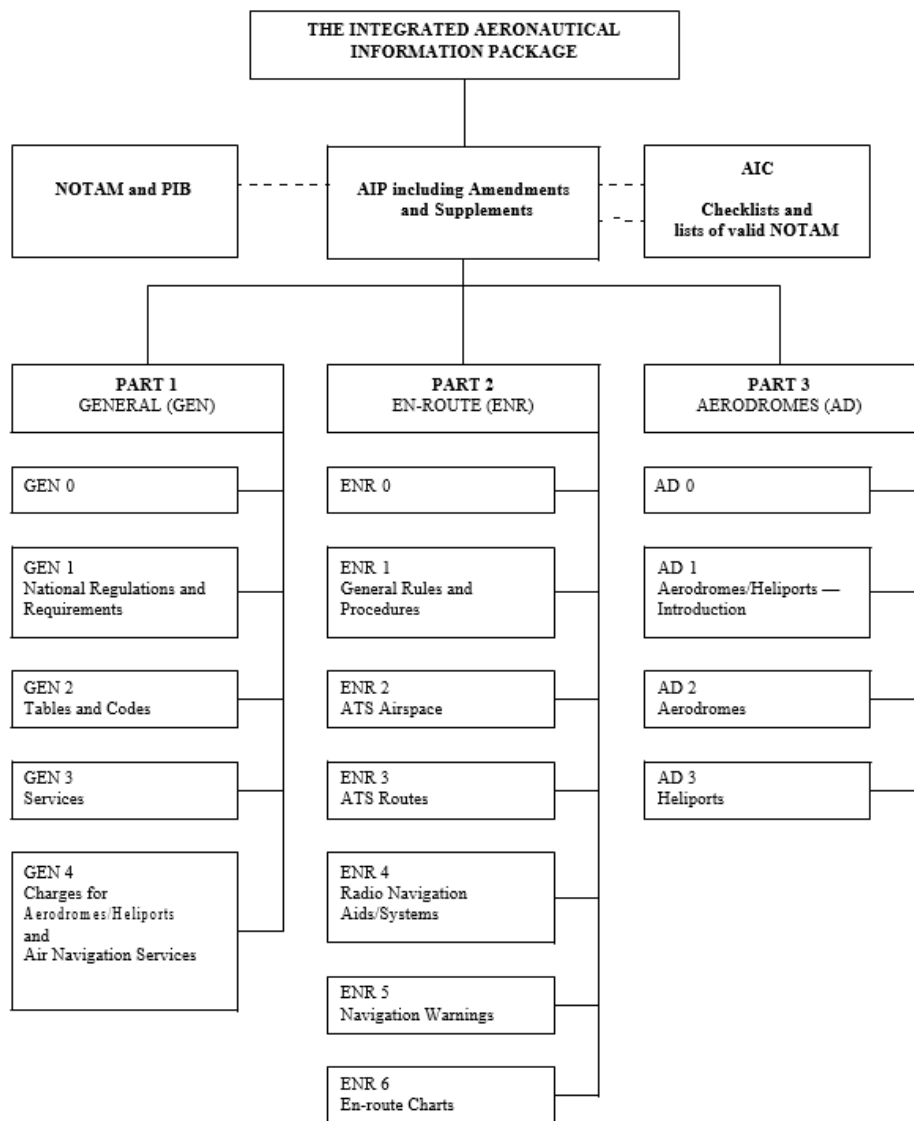
Detailed information on heliports.

4 REGULAR AMENDMENT INTERVAL

- 4.1 The Timor-Leste AIP will be amended every 12 months and will be replaced in its entirety. Interim amendments will be notified via AIC.

5 CONTACT IN CASE OF DETECTED ERRORS

- 5.1 All care has been taken to ensure that the information contained within this AIP is accurate and complete. Any errors and omissions which may be detected, as well as any correspondence concerning the Integrated Aeronautical Information Package, should be referred to AACTL, whose address is shown at GEN 1.



INTENTIONALLY BLANK

AD 0.2 RECORD OF AIP TIMOR-LESTE AMENDMENTS

AIP AMENDMENT			
NR/ Year	Publication date	Date Entered	Entered by
1	2004		
2	25 MAR 2021		
3	02 DEC 2021		
4	16 JUN 2022		
5			
6			
7			
8			
9			
10			
11			
12			
13			
14			
15			
16			
17			
18			
19			
20			

AIRAC AIP AMENDMENT			
NR/ Year	Publication date	Date Entered	Entered by
1			
2			
3			
4			
5			
6			
7			
8			
9			
10			
11			
12			
13			
14			
15			
16			
17			
18			
19			
20			

AD 0.3 RECORD OF AIP TIMOR-LESTE SUPPLEMENTS

NR/ Year	Subjects	AIP Sections(s) Affected	Period of Validity	Cancellation record
01/2021	PBN	Pt 1 and 2	UFN	NA

INTENTIONALLY BLANK

AD 0.4 CHECKLIST OF AIP TIMOR-LESTE PAGES

Edition No.	Page	Date
4	Cover 1-2	16 JUN 2022
4	3-1 to 3-37	16 JUN 2022
4	3-38 to 3-40	25 MAR 2021
4	3-41	02 DEC 2021
4	3-42 to 3-44	25 MAR 2021
4	3-45	16 JUN 2022
4	3-46	25 MAR 2021
4	3-47 to 3-49	16 JUN 2022
4	3-50 to 3-51	15 JAN 2004
4	3-52 to 3-53	12 NOV 2015
4	3-54 to 3-59	16 JUN 2022
4	3-60 to 3-61	Apr 2012
4	3-62 to 3-69	25 MAR 2021
4	3-70 to 3-76	16 JUN 2022
4	3-77	02 DEC 2021
4	3-78 to 3-83	25 MAR 2021
4	3-84 to 3-85	16 JUN 2022
4	3-86	JAN 2018
4	3-87	01 NOV 2017
4	3-88 to 3-89	JAN 2018
4	3-90	JUL 2020
4	3-91	MAR 2017
4	3-92 to 3-98	25 MAR 2021

INTENTIONALLY BLANK

AD 0.5 LIST OF HAND AMENDMENTS TO AIP TIMOR-LESTE

AIP page (s) Affected	Amendment text	Introduced by AIP Amendment NR

INTENTIONALLY BLANK

AD 0.6 TABLE OF CONTENTS TO PART 3 (AD)

PART 3 – AERODROMES (AD).....	3-1
AD 0.....	3-1
AD 0.1 PREFACE	3-1
1 NAME OF PUBLISHING AUTHORITY	3-1
2 APPLICABLE ICAO DOCUMENTS.....	3-1
3 AIP TIMOR-LESTE STRUCTURE	3-1
3.1 The AIP Structure	3-1
3.2 Part 1 – General (GEN)	3-1
3.3 Part 2 – Enroute (ENR)	3-2
3.4 Part 3- Aerodromes (AD).....	3-3
4 REGULAR AMENDMENT INTERVAL	3-4
5 CONTACT IN CASE OF DETECTED ERRORS.....	3-4
AD 0.2 RECORD OF AIP TIMOR-LESTE AMENDMENTS.....	3-7
AD 0.3 RECORD OF AIP TIMOR-LESTE SUPPLEMENTS	3-9
AD 0.4 CHECKLIST OF AIP TIMOR-LESTE PAGES.....	3-11
AD 0.5 LIST OF HAND AMENDMENTS TO AIP TIMOR-LESTE.....	3-13
AD 0.6 TABLE OF CONTENTS TO PART 3 (AD)	3-15
AD 1.....	3-19
AERODROMES/HELIPORTS - INTRODUCTION	3-19
AD 1.1 AERODROMES/HELIPORTS AVAILABILITY.....	3-19
1 INTRODUCTION	3-19
2 GENERAL	3-19
3 LANDINGS MADE AT OTHER THAN DILI AERODROME.....	3-20
4 TRAFFIC OF PERSONS AND VEHICLES ON AERODROMES.	3-20
5 MOVEMENT OF PERSONS	3-21
6 SECURITY AND POLICING	3-21
7 OPERATIONS OUTSIDE OF PUBLISHED HOURS (NIGHT OPERATIONS)	3-21
8 PARKING	3-22
9 CLOSURE OF AERODROMES.....	3-23
10 LOW VISIBILITY OPERATIONS.....	3-23
11 AERODROME MARKERS AND MARKINGS	3-23

12	LIGHTING.....	3-23
13	VISUAL DOCKING GUIDANCE SYSTEMS.....	3-23
14	PAVEMENT STRENGTH LIMITATIONS.....	3-24
AD 1.2	RESCUE AND FIRE FIGHTING SERVICES AND SNOW PLAN	3-25
1	RESCUE AND FIRE FIGHTING SERVICES	3-25
2	LEVELS OF EMERGENCY RESPONSE AT AERODROMES	3-25
3	LOCAL STANDBY	3-25
4	FULL EMERGENCY	3-25
5	AERODROMES WHERE NO RFFS ESTABLISHED	3-25
6	SNOW PLAN	3-25
AD 1.3	INDEX TO AERODROMES AND HELIPORTS	3-27
1	INDEX.....	3-27
AD 1.4	GROUPING OF AERODROMES/HELIPORTS.....	3-29
1	PRIMARY/MAJOR INTERNATIONAL AERODROME	3-29
2	SECONDARY/OTHER INTERNATIONAL AERODROME.....	3-29
3	NATIONAL AERODROME	3-29
AD 1.5	AERODROME HANDLING SERVICE PROVIDERS	3-31
1	PRESIDENT NICOLAU LOBATO INTERNATIONAL AIRPORT	3-31
2	AVIATION FUEL/OIL.....	3-31
3	GROUND HANDLING	3-31
AD 2.....		3-31
AERODROMES		3-33
AD 2.1	AERODROME LOCATION INDICATOR AND NAME	3-33
1	GENERAL	3-33
2	WPAT-ATAURO ISLAND.....	3-35
2.1	Atauro Aerodrome Chart	3-36
3	WPEC-BAUCAU.....	3-39
3.1	Baucau Aerodrome Chart.....	3-41
4	WPD-L-DILI	3-43
4.1	Dili Aerodrome Chart	3-46
4.2	Dili VOR Chart.....	3-48
4.3	Dili VOR/DME B, C & D Chart	3-49
4.4	Dili RNAV (GNSS) RWY 08 CAT H Chart	3-50
4.5	Dili RNAV (GNSS) RWY 26 CAT H Chart	3-51

4.6	Dili ATSEV ONE SID Chart	3-52
4.7	Dili FILOM ONE SID Chart.....	3-53
4.8	Dili RNP Z RWY 08 Chart.....	3-54
4.9	Dili RNP Z RWY 26 Chart.....	3-55
4.10	Dili STAR JEMZE ONE VICTOR ARRIVAL Chart	3-56
4.11	Dili STAR JEMZE ONE QUEBEC ARRIVAL Chart	3-57
4.12	Dili Type A Chart.....	3-58
5	WPFL-LOSPALOS FUILORO	3-61
5.1	Lospalos Fuiloro Aerodrome Chart	3-62
6	WPMN-MALIANA	3-65
6.1	Maliana Aerodrome Chart	3-66
7	WPOC-OECUSSI	3-69
7.1	Oecussi Aerodrome Chart.....	3-73
8	WPSM-SAME	3-75
8.1	Same Aerodrome Chart	3-76
9	WPDB-SUAI	3-79
9.1	Suai Aerodrome Chart.....	3-82
9.2	Suai RWY 17 Departures Chart	3-84
9.3	Suai RWY 35 VOR/DME Chart	3-85
9.4	Suai RNP 346 Chart	3-86
9.5	Suai RNP 249 Chart	3-87
9.6	Suai RWY 35 RNAV (GNSS) Chart	3-88
9.7	Suai Type A Chart	3-89
10	WPVQ-VIQUEQUE	3-91
10.1	Viqueque Aerodrome Chart.....	3-92
AD 3.....		3-95
HELIPORTS.....		3-95
AD 3.1 HELIPORT LOCATION INDICATOR AND NAME.....		3-95
1	RESERVED	3-95

INTENTIONALLY BLANK

AD 1

AERODROMES/HELIPORTS - INTRODUCTION

AD 1.1 AERODROMES/HELIPORTS AVAILABILITY

1 INTRODUCTION

- 1.1 Information regarding aerodromes within Timor-Leste is published in AIP and the standards for aerodromes and heliports are published under CASR Pt139 and associated MOS.
- 1.2 All aerodromes in Timor-Leste are owned by the government.
- 1.3 The aerodrome and heliport directory are published in Part 3 of the AIP.

2 GENERAL

- 2.1 Aeroportu International Presidente Nicolau Lobatu and Baucau are designated as International Aerodromes and other aerodromes as authorised by government resolutions may be used as international aerodromes. However, Presidente Nicolau Lobato International Airport presently is the only aerodrome authorised by AACTL for regular commercial operations on a charter basis.
- 2.2 Operators intending to operate international flights to Baucau aerodrome must obtain prior approval from AACTL which will consider requests on a case-by-case basis. Operators must conduct operations in accordance with the approved slot time, and are responsible for making their own arrangements with and obtain prior approval of the relevant Timor-Leste border control agencies.
- 2.3 Several airstrips and helicopter landing sites exist throughout Timor-Leste that have not been assessed as suitable for civil aircraft operations. Inclusion of an aerodrome in this AIP does not necessarily mean that it is either certified or suitable for use by an operator.
- 2.4 Due to lack of taxiways at aerodromes, pilots may be required after landing to backtrack and taxi on the runway to proceed to

aprons and, likewise, it may be required to position for takeoff.

- 2.5 Visual signs may not be available at all aerodromes.
- 2.6 No friction measuring devices are available for measuring runway surface friction.
- 2.7 Timor-Leste has high and rugged terrain. High terrain and obstructions exist close to the aerodromes. Most obstructions are unmarked or unlit. Pilots must exercise caution especially when conducting circling approaches or operating in low visibility conditions. Details of known obstructions are provided respectively for the listed aerodromes under Section [AD 2](#).
- 2.8 Aerodrome operating minima are not established. Operators shall establish aerodrome operating minima for each of the aerodromes to which they operate into in accordance with the provisions of Annex 6, Part 1.

3 LANDINGS MADE AT OTHER THAN DILI AERODROME.

- 3.1 If a landing is made other than Dili aerodrome or a designated alternate aerodrome, the pilot-in-command shall report the landing as soon as practicable to the immigration, customs, and health authorities. This notification may be through any available communication facility.
- 3.2 The pilot-in-command shall ensure that:
 - a. if permission has not been granted to the aircraft at the previous landing, contact between passengers/crew, and other persons is avoided;
 - b. Cargo, baggage, and mail are not removed from the aircraft.

4 TRAFFIC OF PERSONS AND VEHICLES ON AERODROMES.

- 4.1 The grounds at aerodromes are divided into two zones as follows:
 - a. Public zone comprising that part of the aerodrome opened to public; and
 - b. Restricted zone comprising the rest of the aerodrome.

5 MOVEMENT OF PERSONS

- 5.1 Movement of vehicles in the restricted zone is strictly confined to vehicles driven or used by persons issued with a special permit. Persons so authorized must respect traffic direction, traffic signs and speed limits.

6 SECURITY AND POLICING

- 6.1 Security, care, and protection of aircraft, vehicles, equipment, and goods at aerodromes are not the responsibility of the State or of the aerodrome operator and they cannot be held responsible for any loss or damage.

7 OPERATIONS OUTSIDE OF PUBLISHED HOURS (NIGHT OPERATIONS)

- 7.1 Night operations generally are not permitted at the aerodromes. However, the ANATL, E.P. or the Regional Authority of Oé-Cusse Ambeno may permit night operations for emergency purposes only, such as for urgent medical evacuation or mercy flights and training flights at Presidente Nicolau Lobato International Airport or Aeroporto Internacional de Oé-Cusse Ambeno “Rota do Sândalo”.
- 7.2 Night operations where permitted are undertaken at the sole discretion of the operator and ANATL nor the Regional Authority of Oé-Cusse Ambeno shall not be held liable for any incident or an accident arising from such operations.
- 7.3 Emergency/Mercy Flight-Any operator intending to conduct emergency night operations should give as much prior notification as possible to ANATL or the Regional Authority of Oé-Cusse Ambeno of their intentions including stating any requirement for air traffic control and aerodrome services and obtain approval.
- 7.4 When circumstances do not permit prior notification to AACTL, operators shall notify ANATL or the Regional Authority of Oé-Cusse Ambeno prior to the flight, and AACTL the following day of any emergency flight operations including positioning flights conducted the previous night.

- 7.5 Operators/pilots shall comply with the following requirements appropriate with respect to airways clearance for departing international flights when arrangements have not been made for local air traffic services:
- Contact Brisbane Radio on HF before departure providing flight details and obtain airways clearance; or
 - Contact Ujung Pandang ATSU on telephone number +62 411 553053 or +62 411 4813225 for airways clearance to enter Ujung Pandang FIR before departure.
- 7.6 Operators/pilots shall comply as appropriate with the regulations of the State of the Operator when conducting emergency night operations at Dili aerodrome. The pilot-in-command should preferably have previous experience in daytime operations into Dili aerodrome and be familiar with the routes and terrain conditions. Additionally, the following must be complied with:
- Flights shall be flown under IFR;
 - ICAO requirements for lowest safe altitudes;
 - Adequate fuel for diversion purposes;
 - Runway inspection prior to take-off and landing; and
 - Arrangements with the border control agencies for approval.
- 7.7 Operators and/or pilots-in-command are responsible to assess and ensure that each emergency night operation can be conducted in a safe manner.
- 7.8 Night Training-ANATL may approve night training flights in the Dili CTR/aerodrome to enable flight crew to maintain their proficiency. Operators wishing to conduct night training shall make a request to ANATL and comply with all conditions stated in the approval.

8 PARKING

- 8.1 Aircraft parking space at aerodromes is limited. Overnight parking at Presidente Nicolau Lobato International Airport is subject to specific approval from ANATL. Requests for overnight

parking shall be included in the request for flight approval.

9 CLOSURE OF AERODROMES

- 9.1 Aerodromes will be closed under the following conditions:
- a. Whenever the landing area is unfit or is unsafe; or
 - b. At such other times as notified by NOTAM.
 - c. Unregistered or uncertified aerodromes may not be notified as closed even when the landing area is unsafe or unfit for use, see [AD 2.1](#).
- 9.2 Aerodromes will not be closed because of adverse weather conditions or unavailability of essential services. The pilot-in-command is responsible to decide whether to take-off or land during adverse weather conditions or when advised of unavailability of services
- 9.3 Aircraft experiencing an emergency will be permitted to land regardless whether the aerodrome is closed, or conditions are unsafe. When ATC is operating, the pilot will be advised if conditions are unsafe. Outside of ATC operating hours the pilot will receive no advice

10 LOW VISIBILITY OPERATIONS

- 10.1 Low visibility operations are not approved in Timor-Leste.

11 AERODROME MARKERS AND MARKINGS

- 11.1 Where possible, aerodrome markers and markings are in accordance with ICAO DOC 9157.

12 LIGHTING

- 12.1 Lighting provided at aerodromes in Timor-Leste (except WPOC) may not necessarily be in accordance with ICAO standards. Clarification of lighting at intended aerodromes should be confirmed with ANATL to ensure that it meets individual operational needs.

13 VISUAL DOCKING GUIDANCE SYSTEMS

- 13.1 VDGS are not currently used in Timor-Leste.

14 PAVEMENT STRENGTH LIMITATIONS

- 14.1 Aerodrome pavement strength limitations (where known) are published at AIP [AD 2](#).

AD 1.2 RESCUE AND FIRE FIGHTING SERVICES AND SNOW PLAN

1 RESCUE AND FIRE FIGHTING SERVICES

- 1.1 Information on Rescue and Fire Fighting Services is given on the relevant page for each aerodrome at AD 2.
- 1.2 No facilities are available for removal of disabled aircraft.

2 LEVELS OF EMERGENCY RESPONSE AT AERODROMES

- 2.1 ARFFS will respond at the appropriate airport category for all emergencies.

3 LOCAL STANDBY

- 3.1 Where a Local Standby is declared, on airport services will respond for the emergency.

4 FULL EMERGENCY

- 4.1 Where a Full Emergency is declared, on and off airport services will respond for the emergency.

5 AERODROMES WHERE NO RFFS ESTABLISHED

- 5.1 Limited or no support may be provided by local fire services remote from aerodromes.

6 SNOW PLAN

- 6.1 Due to the tropical climate in Timor-Leste there is no national snow plan.

INTENTIONALLY BLANK

AD 1.3 INDEX TO AERODROMES AND HELIPORTS

1 INDEX

- 1.1 A list of aerodromes included in AIP is shown below.
Aerodromes marked with * do not have a NOTAM service, and information provided in AIP may not be representative of current aerodrome conditions and may be inaccurate.

Aerodrome/Heliport Name and Location Indicator	Type of Traffic permitted to use the Aerodrome/Heliport			Reference to AD Section and RMKS
	International (INTL)/ National (NTL)	IFR VFR	S=Scheduled NS=Non Scheduled P=Private	
Aerodromes				
WPAT-Atauro Island*	NTL	VFR	NS P	AD 2.2 Unmanned
WPEC-Baucau	INTL NTL	VFR	NS P	AD 2.3 Unmanned
WPDL-Dili	INTL NTL	VFR IFR	S NS P	AD 2.4
WPFL-Lospalos Fuiloro*	NTL	VFR	NS P	AD 2.5 Unmanned
WPMN-Maliana*	NTL	VFR	NS P	AD 2.6 Unmanned
WPOC-Oecussi	INTL NTL	VFR	NS P	AD 2.7 PPR
WPSM-Same*	NTL	VFR	NS P	AD 2.8 Unmanned
WPDB-Suai	INTL NTL	VFR IFR	NS P	AD 2.9 Unmanned
WPVQ-Viqueque*	NTL	VFR	NS P	AD 2.10 Unmanned
Heliports				Reserved

INTENTIONALLY BLANK

AD 1.4 GROUPING OF AERODROMES/HELIPORTS

1 PRIMARY/MAJOR INTERNATIONAL AERODROME

- 1.1 The aerodrome of entry and departure for international air traffic where all formalities concerning customs, health, immigration, animal and plant quarantine and similar procedures are carried out and where air traffic services are available during published hours of operation.

2 SECONDARY/OTHER INTERNATIONAL AERODROME

- 2.1 An aerodrome available for entry and departure of international air traffic where air traffic services and the formalities concerning customs, health, immigration, animal and plant quarantine and similar procedures are made available on a restricted basis only to flights with prior approval.

3 NATIONAL AERODROME

- 3.1 An aerodrome available only for domestic air traffic where civil air traffic are permitted under conditions specified by ANATL.
- 3.2 Nomination as an aerodrome as a national aerodrome does not necessarily mean that the aerodrome is certified or registered.

INTENTIONALLY BLANK

AD 1.5 AERODROME HANDLING SERVICE PROVIDERS

1 PRESIDENT NICOLAU LOBATO INTERNATIONAL AIRPORT

- 1.1 Contact details of aircraft fuel and ground handling service providers at Presidente Nicolau Lobato International Airport are listed below.
- 1.2 The provision of any firm or corporation name is for the information and convenience of aircraft operators and pilots only and in no manner constitutes an endorsement or recommendation by ANATL.

2 AVIATION FUEL/OIL

ETO MOVING ENERGY

Tel: +670 3322 793

Mobile: +670 7738 3270 +670 7757 1385

Email: jose.gusmao@eto.tl info@eto.tl pedro.costa@eto.tl

Website: www.eto.tl

PERTAMINA INTERNATIONAL TIMOR SA

Tel: +670 3321 760

Mobile: +670 7310 6060 +670 7760 2222

E-mail: roni.viera@pitsa.tl

Website: www.pitsa.tl

3 GROUND HANDLING

Bollore

Tel: +670 3324 212

Mobile: +670 7723 0522 (H24)

Fax: +670 3324 077

E-mail: manuel.soares@bollore.com

STAT

Tel: +670 3321 025

Mobile: +670 7733 8725

Fax: +670 3310 917

E-mail: stat_j@yahoo.com

E-mail: statdil@gmail.com

INTENTIONALLY BLANK

AD 2

AERODROMES

AD 2.1 AERODROME LOCATION INDICATOR AND NAME

1 GENERAL

- 1.1 Full details of all international and national aerodromes in Timor-Leste are provided in AIP.
- 1.2 Details of uncertified and unregistered aerodromes may also be included in AIP. It is the sole responsibility of a pilot intending to use any uncertified or unregistered aerodrome to obtain current information on that aerodrome from the owner/operator prior to flight planning and to assess the suitability of the aerodrome for the intended operation.
- 1.3 Inclusion of aerodrome information in AIP is based upon the information available at the time of publication and will not be updated by NOTAM for uncertified or unregistered aerodromes.

INTENTIONALLY BLANK

2 WPAT-ATAURO ISLAND

Name: Atauro Island

- a. ICAO Code: WPAT
- b. IATA Code: AUT
- c. Airport Authority: ANATL
 - i. +670 78579932
 - ii. +670 78579284
 - iii. PPR

ARP: 081435S 1253622E

Elevation: 10'

Runways:

- a. RWY 01/19
- b. Length: 700m
- c. Gravel

Declared Distances: Not available

Airport Lighting: NIL

Air Traffic Control: NIL

Navigation Aids: NIL

ARFFS: NIL

Fuel: NIL

Local Traffic Regulations:

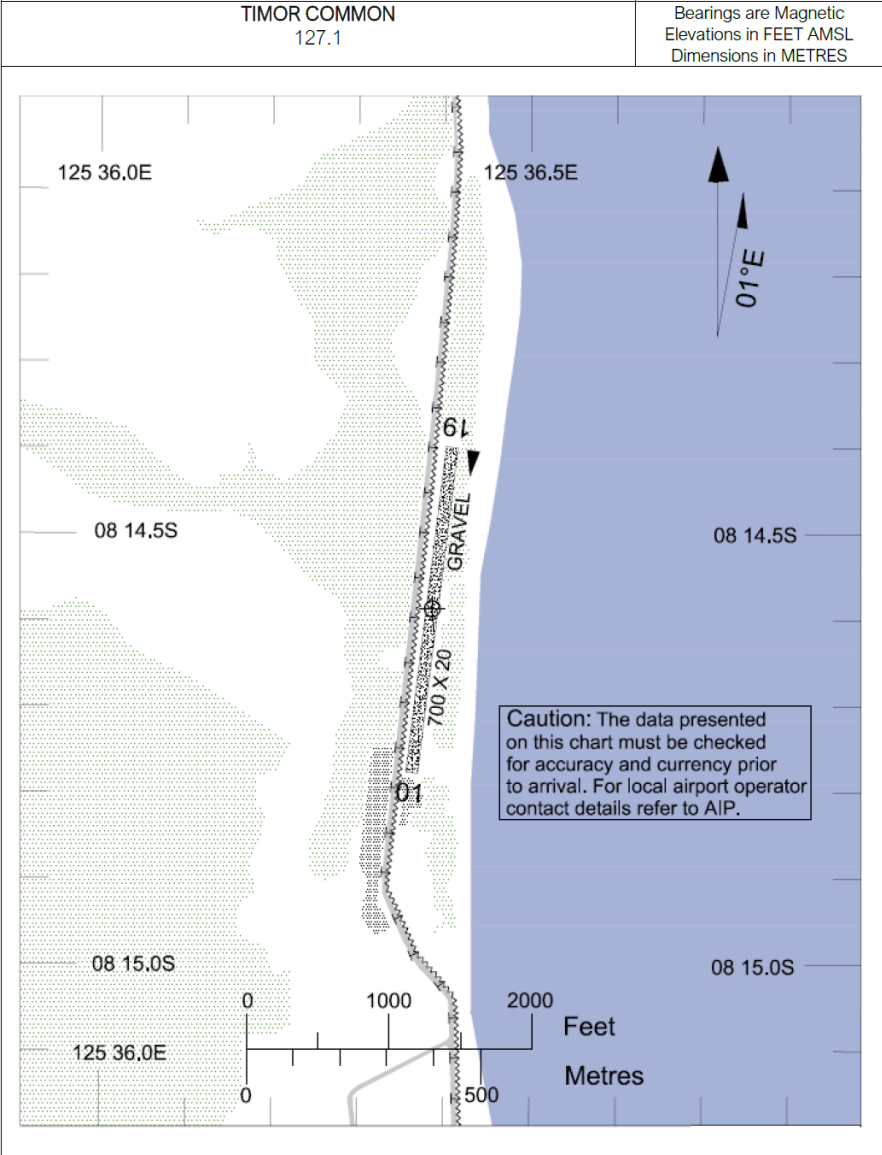
- a. Traffic shall use Timor Common Freq 127.10MHz
- b. Airport available HJ only
- c. VFR Traffic only
- d. Right hand circuits RWY 01

2.1 **Atauro Aerodrome Chart**

AERODROME
CHART AD 2-2

AD ELEV 10
08 14 35S 125 36 22E

ATAURO (WPAT)
TIMOR-LESTE



AERODROME
CHART AD 2-2AD ELEV 10
08 14 35S 125 36 22EATAURO (WPAT)
TIMOR-LESTE

TIMOR COMMON 127.1		Bearings are Magnetic Elevations in FEET AMSL Dimensions in METRES
RWY	DIRECTION	
01	006°	
19	186°	

NOTES

CAUTION: HOUSES, TREES AND FENCES LOCATION IMMEDIATELY PRIOR
TO THR RWY 01.

ANIMAL HAZARDS EXIST.
AIRPORT AVAILABLE HJ ONLY
RIGHT HAND CIRCUITS RWY 01
VFR TRAFFIC ONLY

25MAR21

INTENTIONALLY BLANK

3 WPEC-BAUCAU

Name: Baucau Airport

- a. ICAO Code: WPEC
- b. IATA Code: BCH
- c. Airport Authority: ANATL
- d. Flight Approvals: AACTL
 - i. +670 78579932
 - ii. +670 78579284
 - iii. PPR-7 business days

ARP: 082907.70S 1262357.60E

Elevation: 1777'

Runways:

- a. Asphalt PCN: 49/F/A/W/T
- b. THR 14 Co-Ordinates 082835.31S 1262332.36E
 - i. Elevation: 1692'
- c. THR 32 Co-Ordinates 082939.85S 1262422.64E
 - i. Elevation: 1777'
- d. RWY Bearing: 139°/319°M
- e. Length: 2509m
- f. Width: 56m
- g. Shoulders: Nil
- h. RWS: 2629x300m
- i. RESA: Nil
- j. CWY: Nil

Declared Distances:

- a. TORA: 14/32 2509m
- b. TODA 14/32: 2509m
- c. ASDA 14/32: 2509m
- d. LDA 14/32: 2509m

Taxiways:

- a. Asphalt PCN: 49/F/A/W/T
- b. TWY width: 37m

Apron Information:

- a. Asphalt PCN: 49/F/A/W/T
- b. 100x108m

Airport Lighting: Nil

Air Traffic Control: Nil

Navigation Aids: Nil

ARFFS: Nil

Fuel: Nil

Local Traffic Regulations:

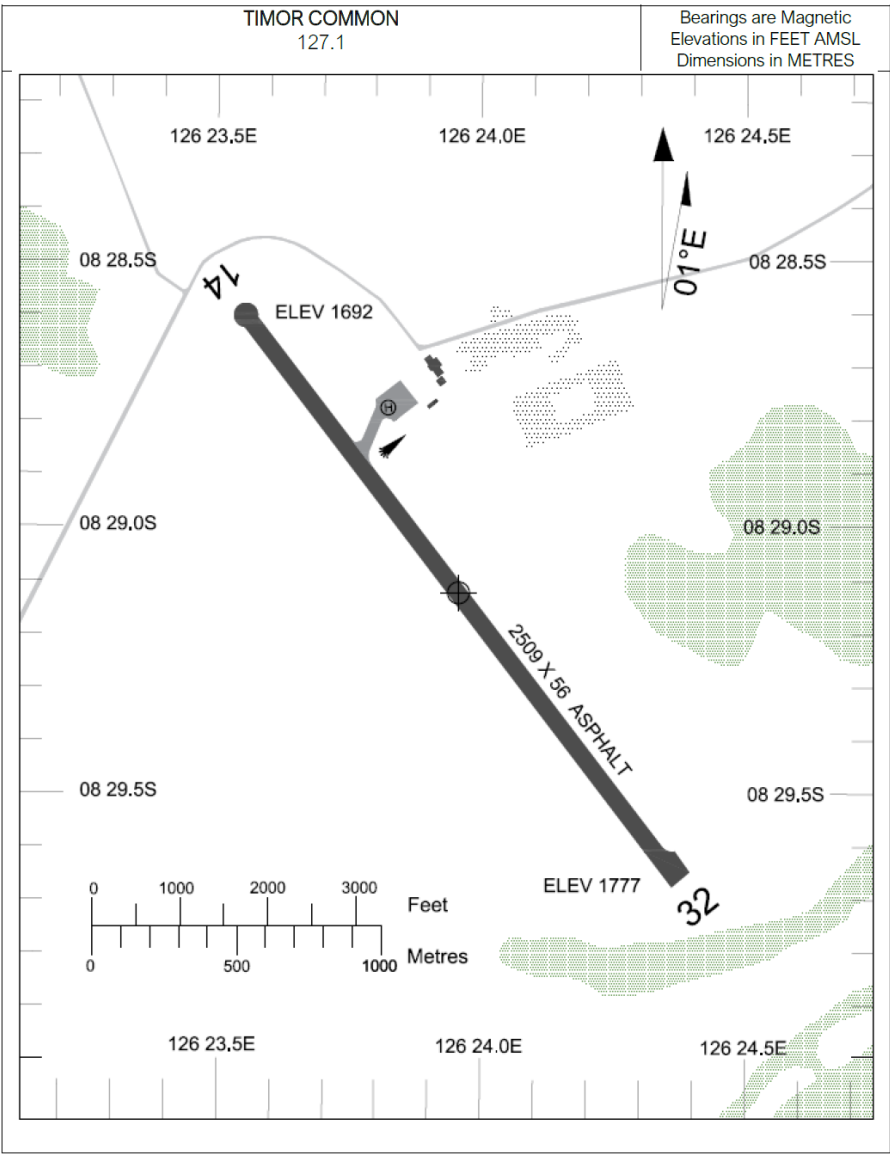
- a. Traffic shall use Timor Common Freq 127.10MHz
- b. Pilots must overfly aerodrome to observe prior to making an approach
- c. Airport available HJ only
- d. VFR traffic only

3.1 Baucau Aerodrome Chart

AERODROME
CHART AD 2-3

AD ELEV 1777
08 29 07.7S 126 23 57.6E
TIMOR COMMON
127.1

BAUCAU (WPEC)
TIMOR-LESTE



AERODROME
CHART AD 2-3

AD ELEV 1777
08 29 08S 126 23 58E

BAUCAU (WPEC)
TIMOR-LESTE

TIMOR COMMON 127.1				Bearings are Magnetic Elevations in FEET AMSL Dimensions in METRES
RWY	DIRECTION	THR	RWS	BEARING STRENGTH
14	139°	08 28 35.3S 126 23 32.4E	2629 X 300	PCN 49/F/A/W/T
32	319°	08 29 39.9S 126 24 22.6E		

NOTES

ANIMAL HAZARDS EXIST.
PILOTS MUST OVERFLY AD TO OBSERVE PRIOR TO MAKING AN APPROACH
AIRPORT AVAILABLE HJ ONLY

4 WPDL-DILI

Name: President Nicolau Lobato International Airport Dili

- e. ICAO Code: WPDL
- f. IATA Code: DIL
- g. Airport Authority: ANATL
- h. Flight Approvals: AACTL
- i. +670 78579932
- ii. +670 78579284
- iii. WPDLYDYX, WPDLZTZX
- iv. PPR

ARP: 083248.88S 1253129.89E

Elevation: 29'

Runways:

- a. Asphalt/Concrete
- i. PCN: 42/F/B/X/U
- b. THR 08 Co-Ordinates 083254.12S 1253059.06E
- i. Elevation: 21'
- c. THR 26 Co-Ordinates 083240.73S 1253158.04E
- i. Elevation: 29'
- d. RWY Bearing: 075°/255°M
- e. Length: 1850m
- f. Width: 30m
- g. Shoulders: Not provided
- h. RWS: 1970x150m
- i. RESA: Not provided
- j. CWY: Not provided

Declared Distances:

- a. TORA 08/26: 1850m
- b. TODA 08/26: 1850m

- i. Fence 5' ABV THR and 40m right of centreline not assessed for TODA RWY 26
- c. ASDA 08/26: 1850m
- d. LDA 08/26: 1850m

Taxiways:

- a. TWY D width: 23m
- b. TWY A width: 15m
- c. TWY B width: 15m
- d. TWY C width: 15m
- e. TWY E width: 23m

Apron Information:

- a. Asphalt/Concrete:
 - i. PCN: 42/F/B/X/U

Parking Stands:

- a. International Apron
 - i. Bays D1-D3 Code C
- b. Other Aprons
 - i. Apron A-Rotary and fixed wing up to 3C
 - ii. Apron B- Rotary and fixed wing up to 3C
 - iii. Apron C- Rotary and fixed wing up to 3C
 - iv. Apron E-Rotary and General Aviation

Airport Lighting:

- a. PAPI
- b. ABN GW

Air Traffic Control:

- a. Dili Approach: 122.90MHz
 - i. TX/RX located at Dili and Talabela, Hohonaro Liquilibato
- b. Dili Tower: 133.90MHz
- c. ATC Hrs 2130-0900 UTC daily

- d. TIBA: 127.10MHz
- i. TX/RX located at Dili and Talabela, Hohonaro Liquilibato

Navigation Aids:

- a. VOR/DME: 113.40 MHz/CH81X (DIL)
- i. 083238.18S 1253139.84E
- ii. VOR/DME has limited range due terrain to the south

Standby Power:

- a. Available for critical systems, max switchover time 15 seconds

ARFFS:

- a. Category 6
- b. Water rescue service navbl

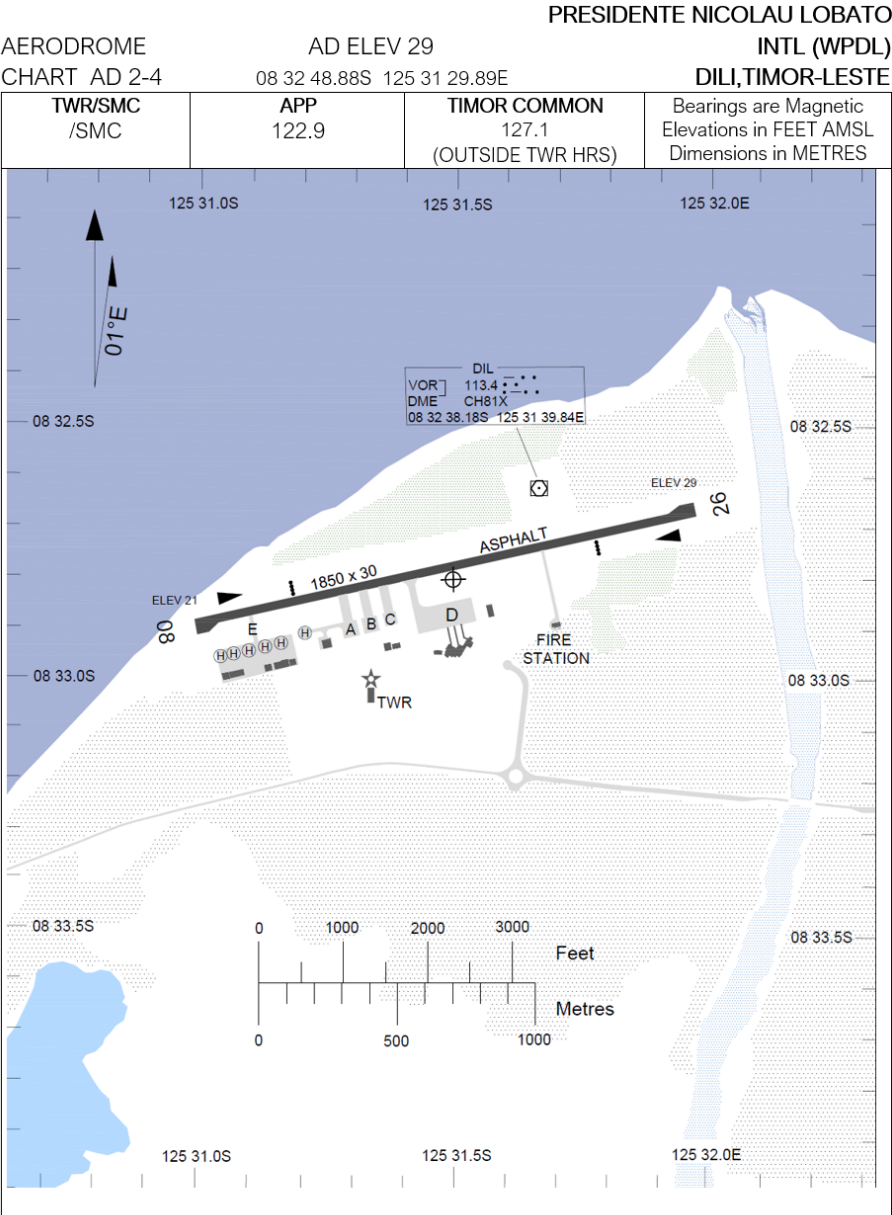
Fuel:

- a. Jet Fuel available
- b. AVGAS not available

Local Traffic Regulations:

- a. Right hand circuits RWY 26
- b. Helicopters must use runway for ARR and DEP and shall ground taxi to/from aprons
- c. Obstacles infringing OLS may not be lit
- d. Penetration of VSS by telecommunications mast, 526' AMSL, BRG 248M/2.59NM from DIL VOR, unlit. VSS penetrated by 44.9m
- e. Transient ships may infringe the RWY APCH slope clearance and VSS.

4.1 Dili Aerodrome Chart



AERODROME

CHART AD 2-4

AD ELEV 29

8 32 48.88S 125 31 29.89E

PRESIDENTE NICOLAU LOBATO

INTL (WPDL)

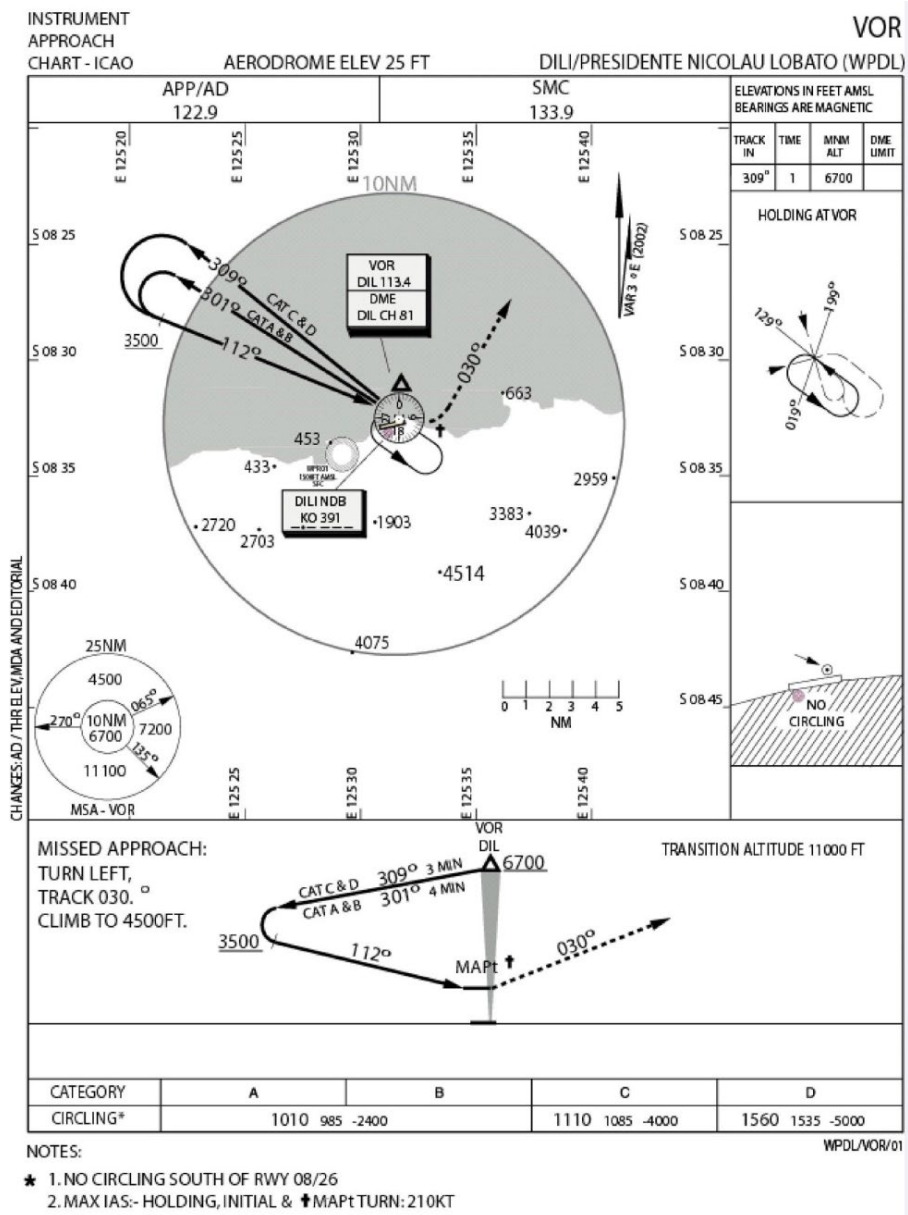
DILI,TIMOR-LESTE

TWR/SMC 133.9		APP 122.9		TIMOR COMMON 127.1 (OUTSIDE TWR HRS)		Bearings are Magnetic Elevations in FEET AMSL Dimensions in METRES	
RWY	DIRECTION	THR		RWS	BEARING STRENGTH		
08	075°	08 32 54.13S		1970 X 150	PCN 42/F/B/X/U		
		125 30 59.06E					
26	255°	08 32 40.73S					
		125 31 58.04E					
RWY	AERODROME LIGHTING						
08	PAPI LEFT SIDE 3°			ABN GW			
26	PAPI LEFT SIDE 3°						
NOTES							
CAUTION: HILLS WEST AND EAST NEAR BOTH ENDS OF RWY. CAUTION: BIRD AND ANIMAL HAZARDS EXIST.							
RWY 26 RH CIRCUITS AIRPORT AVAILABLE HJ ONLY PRIOR PERMISSION REQUIRED FOR NGT OPS (EMERGENCY ONLY). ACFT WITH MTOW GREATER THAN 7000KG MUST ROLL TO RWY END AFTER LANDING AND BACKTRACK TO PREVENT DAMAGE TO RWY. HELICOPTERS MUST USE RWY FOR ARR AND DEP AND TAXI TO/FROM APRONS							

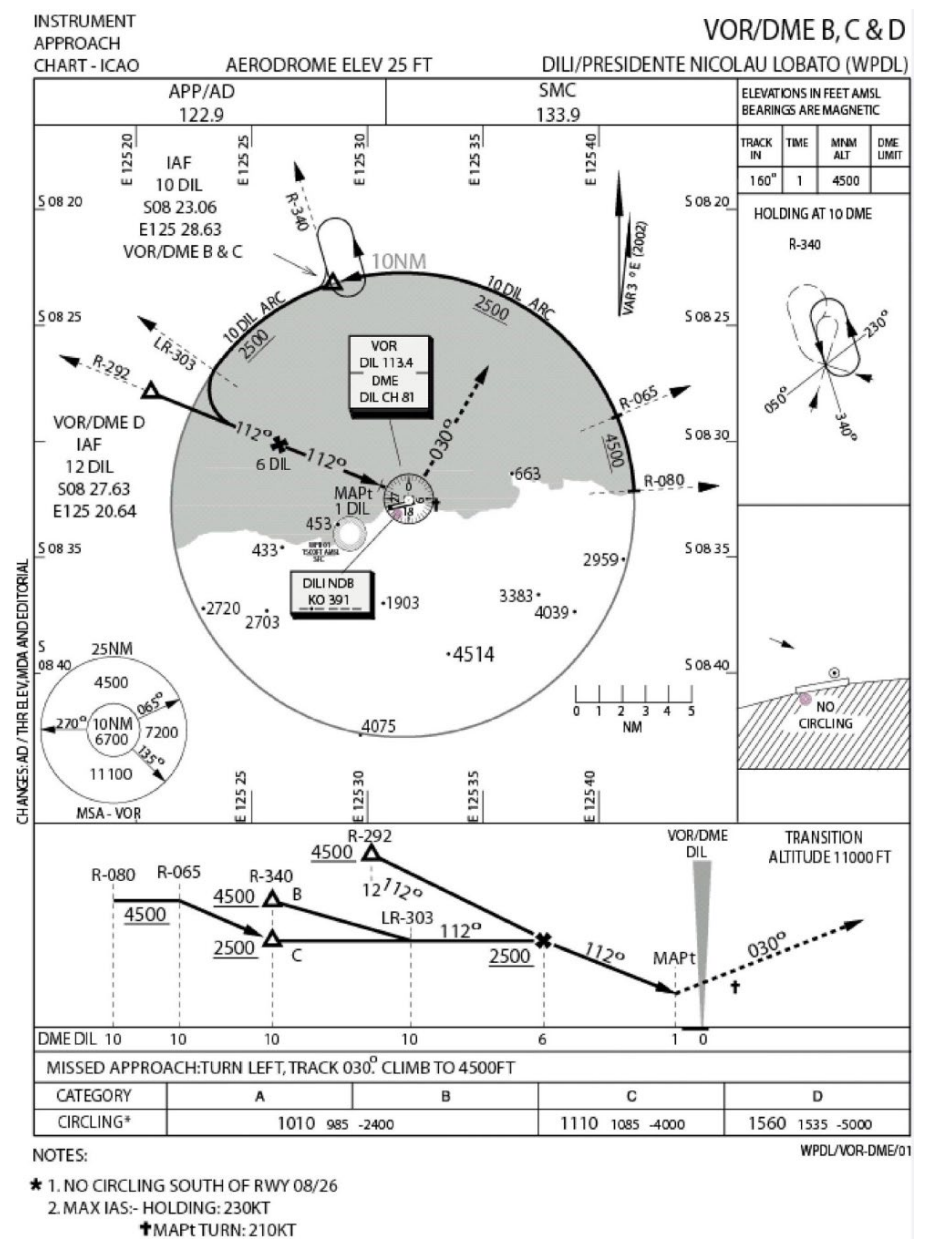
Changes: Coordinates changed to hundredths

16JUN22

4.2 Dili VOR Chart



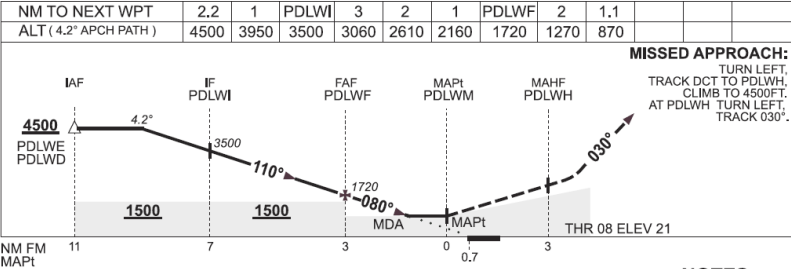
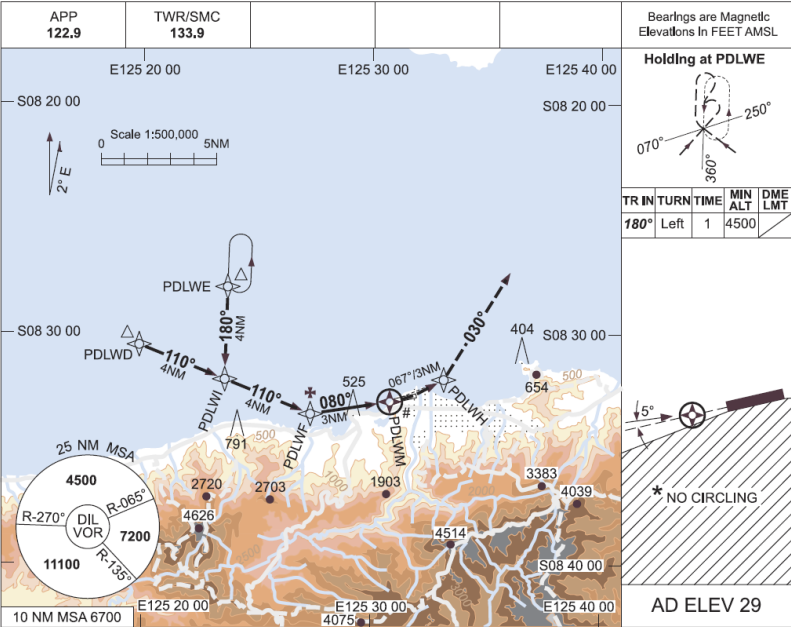
4.3 Dili VOR/DME B, C & D Chart



4.4 Dili RNAV (GNSS) RWY 08 CAT H Chart

CAD APPROVED OPERATORS ONLY
USE QNH

RNAV (GNSS) RWY 08
DILI, PRESIDENTE NICOLAU LOBATO (WPDL)



NOTES	
1. WPDL QNH REQUIRED.	
2. MAX IAS: HOLDING : 100KT INITIAL : 100KT	
3. APCH PATH ANGLE DOES NOT COINCIDE WITH PAPI ON GLIDE SLOPE INDICATION.	

CATEGORY	H
S-I GNSS	870 (849-3.5)
	NOT AUTHORISED

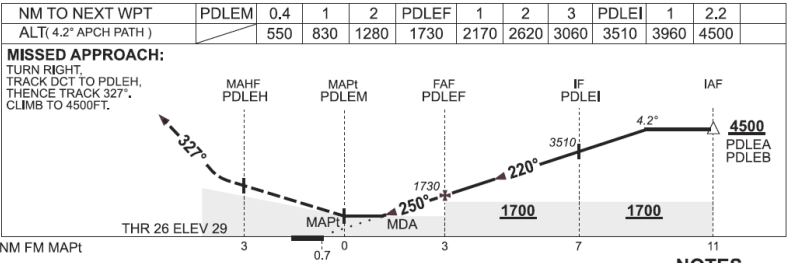
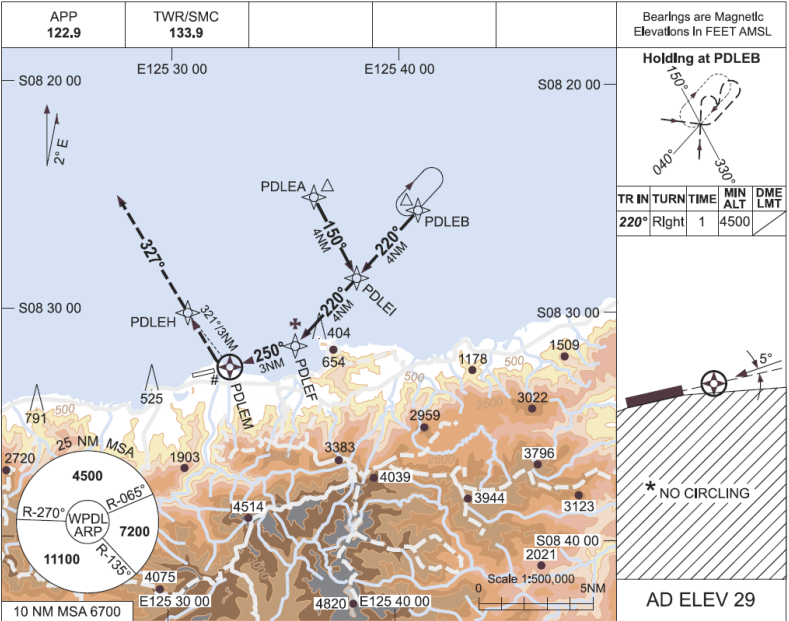
Changes: NEW PROC.



4.5 Dili RNAV (GNSS) RWY 26 CAT H Chart

CAD APPROVED OPERATORS ONLY
USE QNH
12 NOV 2015

RNAV (GNSS) RWY 26
DILI, PRESIDENTE NICOLAU LOBATO (WPDL)



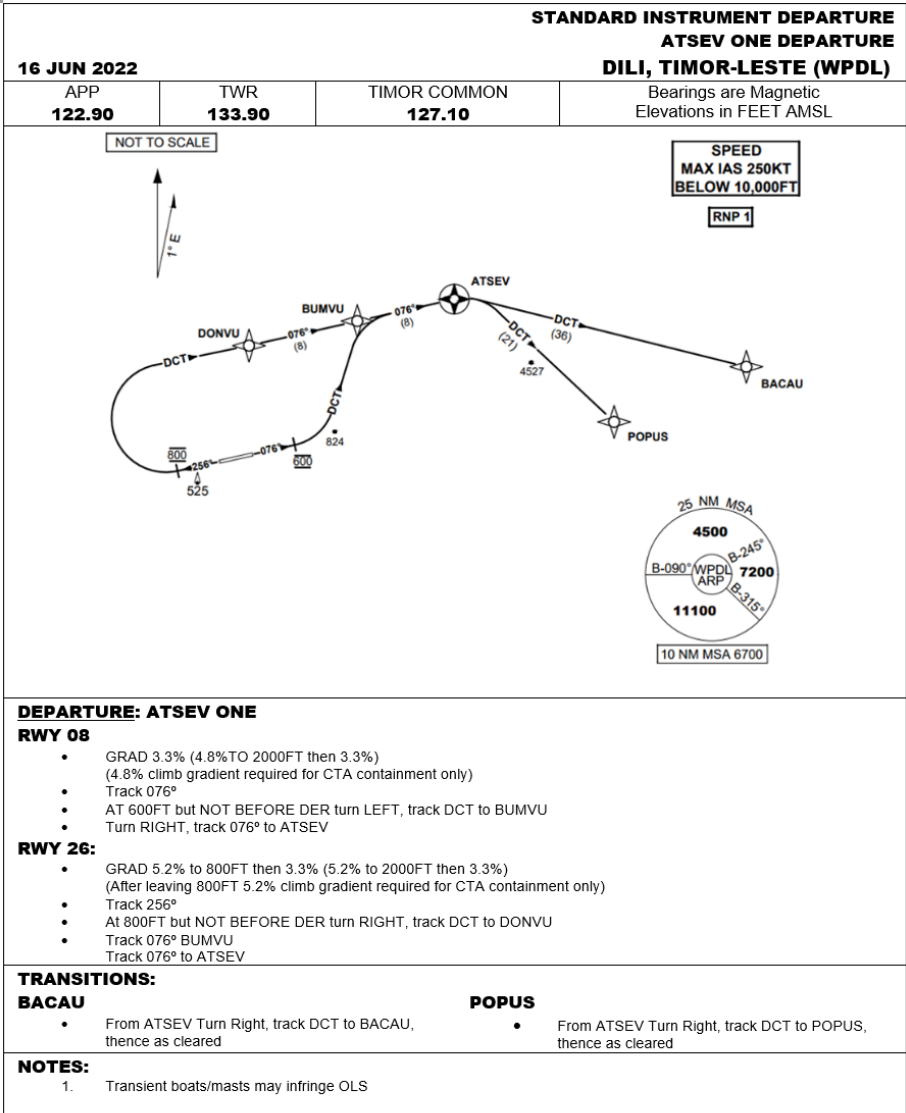
CATEGORY	H
S-I GNSS	550 (521-2.2)
	NOT AUTHORISED

NOTES
1. WPDL QNH REQUIRED.
2. MAX IAS: HOLDING:100KT INITIAL :100KT # MAP TURN: 90KT.
3. APCH PATH ANGLE DOES NOT COINCIDE WITH PAPI ON GLIDE SLOPE INDICATION.

Changes: NEW PROC.



4.6 Dili ATSEV ONE SID Chart



New Procedure



4.7 Dili FILOM ONE SID Chart

STANDARD INSTRUMENT DEPARTURE
FILOM ONE DEPARTURE
DILI, TIMOR-LESTE (WPDJ)

16 JUN 2022 APP 122.90	TWR 133.90	TIMOR COMMON 127.10	Bearings are Magnetic Elevations in FEET AMSL
--------------------------------------------	----------------------	-------------------------------	--------------------------------------------------

NOT TO SCALE

SPEED
 MAX IAS 250KT
 BELOW 10,000FT
RNP 1

DEPARTURE: FILOM ONE

RWY 08

- GRAD 3.3% (4.8% TO 2000FT then 3.3%)
(4.8% climb gradient required for CTA containment only)
- MAX IAS 240KT
- Track 076°
- AT 600FT but NOT BEFORE DER turn LEFT, track DCT to BEGRO
- Track 266° to FILOM
MAX IAS 240KT at FILOM

RWY 26:

- GRAD 5.2% to 800FT then 3.3% (5.2% TO 2000FT then 3.3%)
(After leaving 800FT 5.2% climb gradient required for CTA containment only)
- MAX IAS 240KT
- Track 256°
- AT 800FT but NOT BEFORE DER turn RIGHT, track DCT to FILOM
MAX IAS 240KT at FILOM

TRANSITIONS:

DOVIK

- From FILOM track 293° to DOVIK, thence as cleared

MUBRA

- From FILOM track 266° to ABTUX
- Turn LEFT, track 226° to MUBRA, thence as cleared

NOTES:

- Climb gradients required for Enroute LSALTs

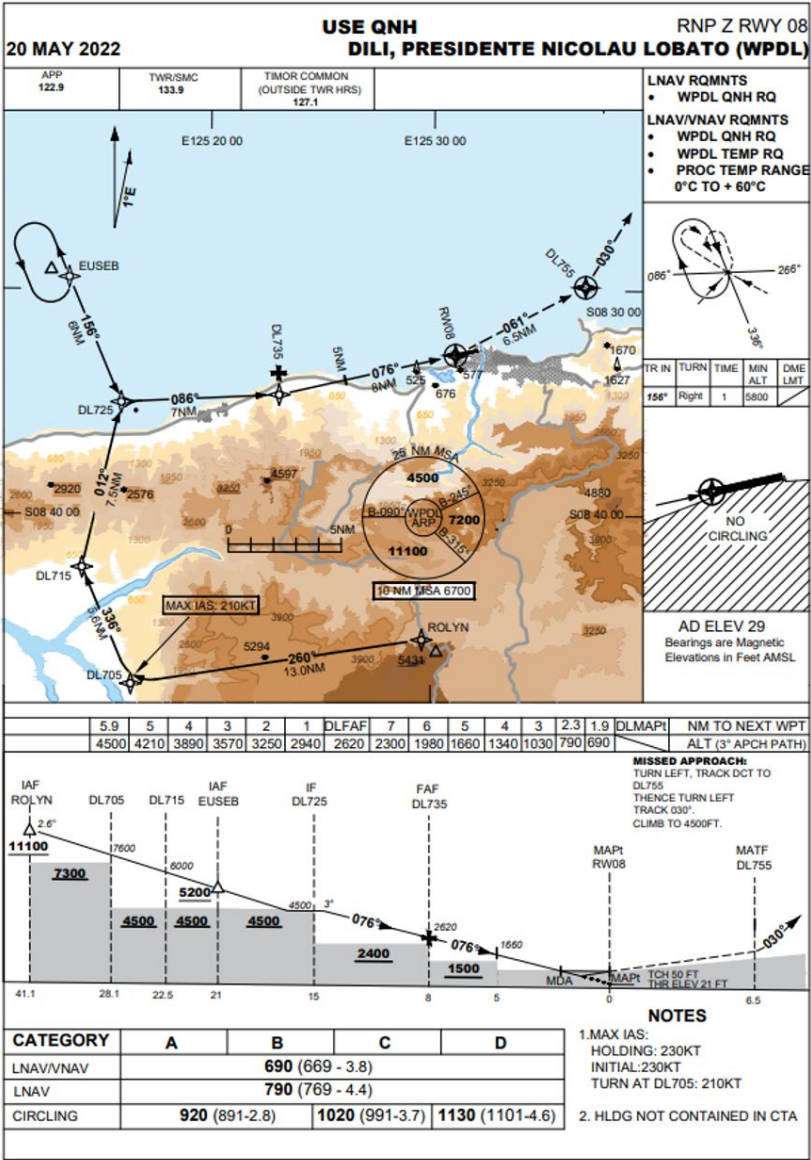
DEP RWY 08
 For DOVIK: 3.8% TO 7000
 For MUBRA (W42): 3.5% TO 7500
 For MUBRA (W33): 4.5% TO 9500

DEP RWY 26
 For DOVIK: 4.5% TO 7000
 For MUBRA (W42): 4.1% TO 7500
 For MUBRA (W33): 5.2% TO 9500

Transient bgats/masts may infringe OLS



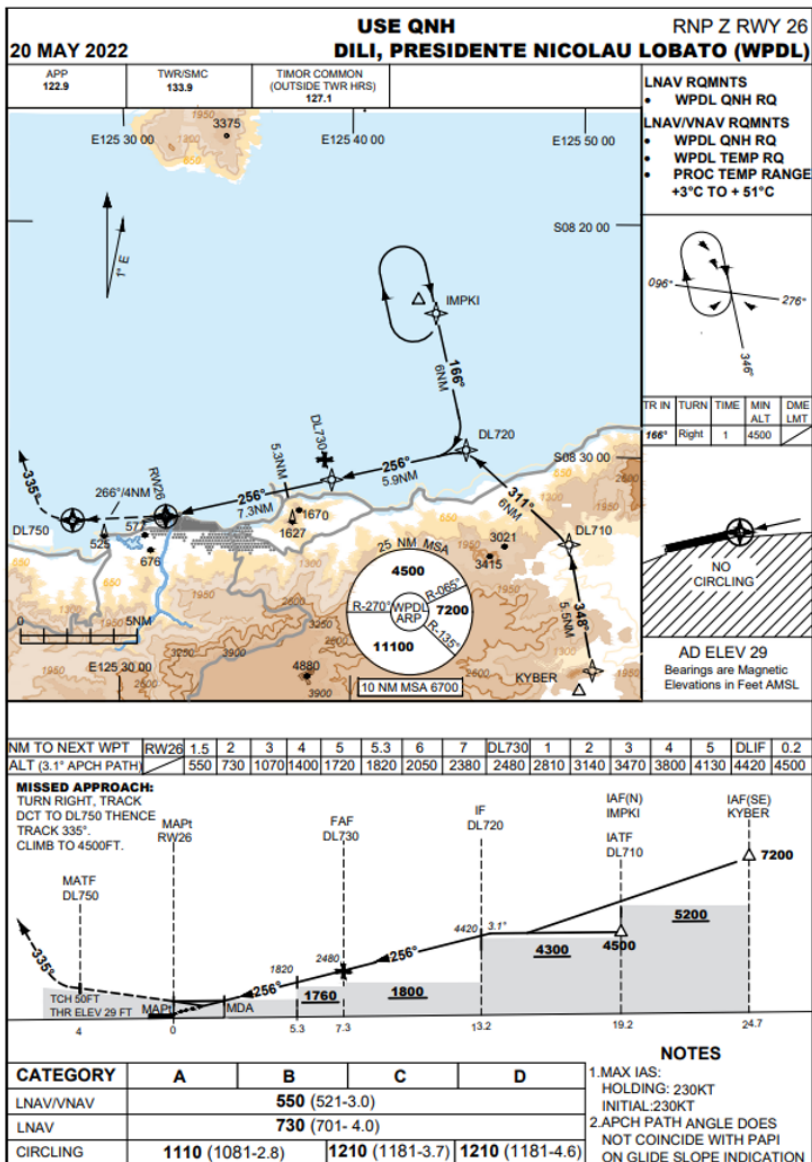
4.8 Dili RNP Z RWY 08 Chart



New Procedure



4.9 Dili RNP Z RWY 26 Chart

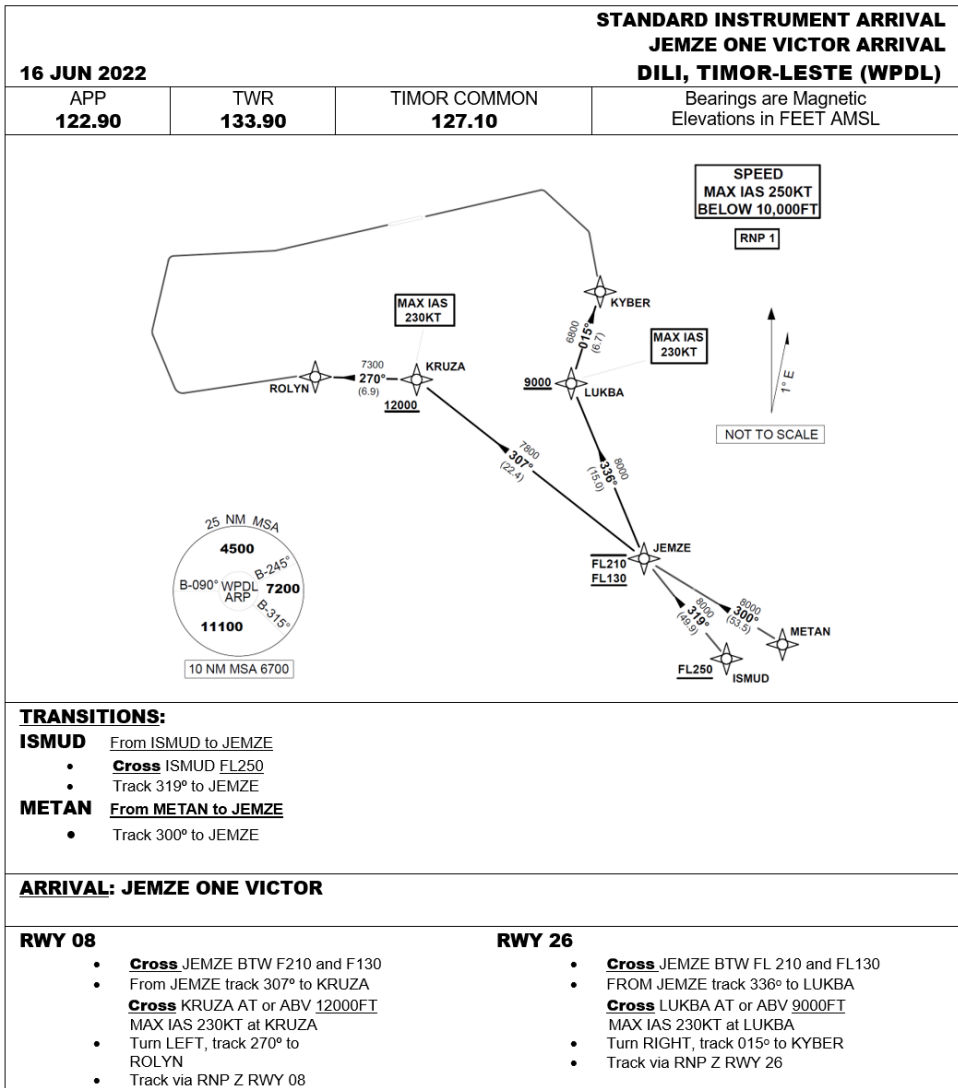


New Procedure

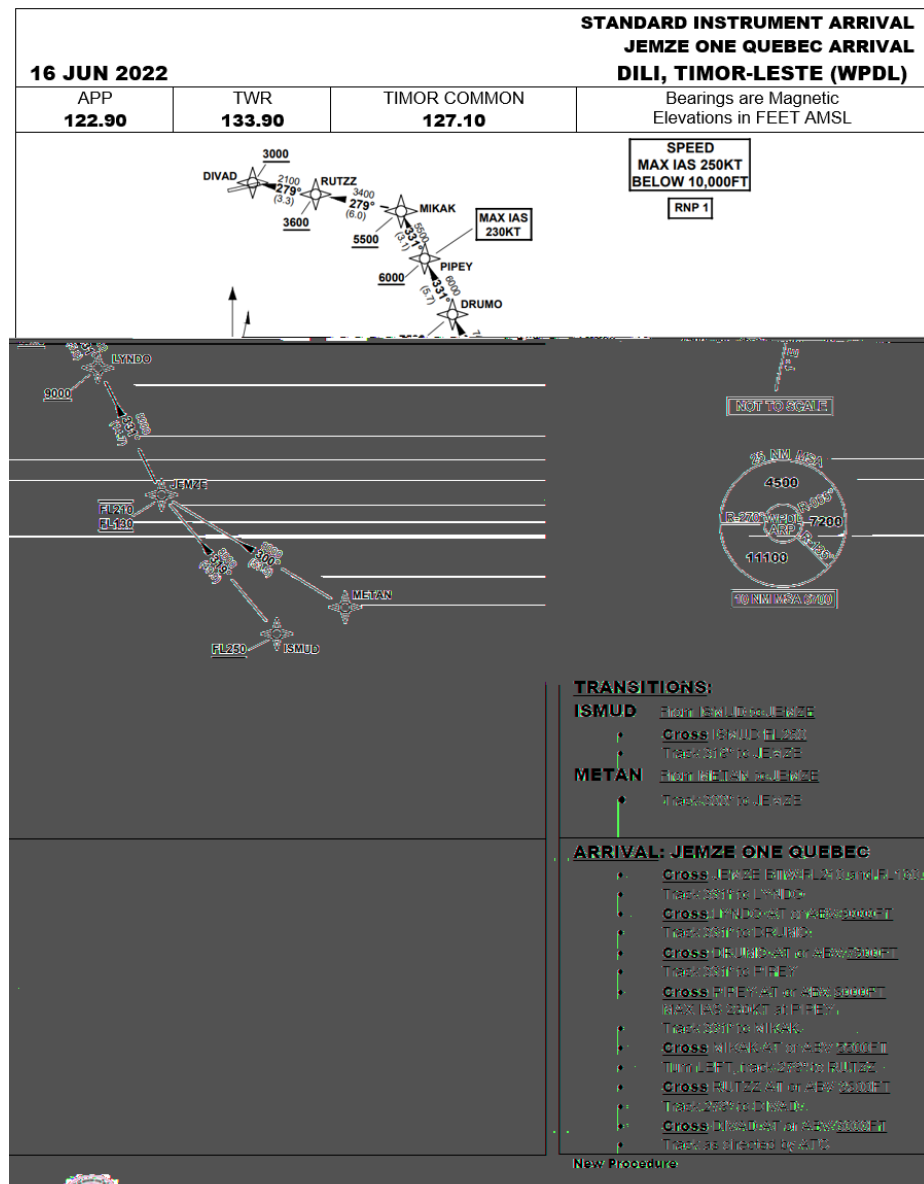


4.10

Dili STAR JEMZE ONE VICTOR ARRIVAL Chart

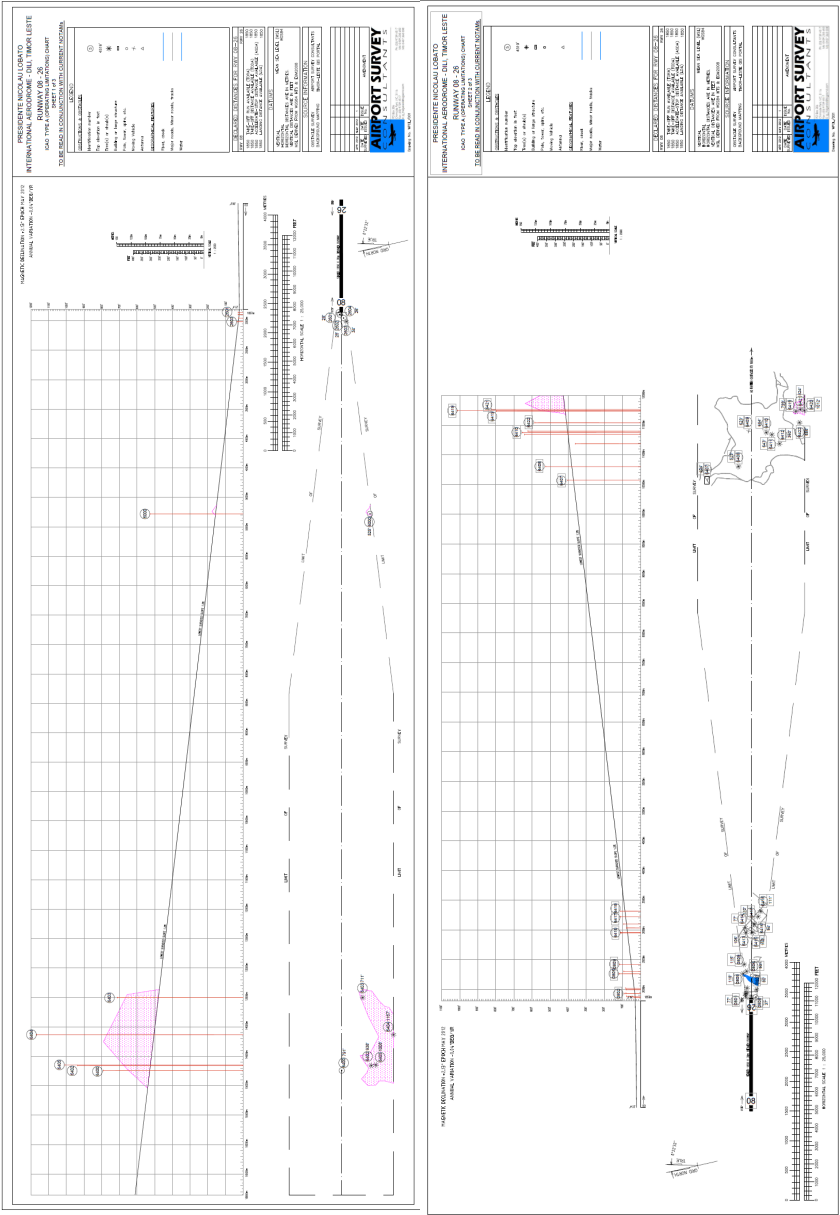


4.11 Dili STAR JEMZE ONE QUEBEC ARRIVAL Chart



4.12

Dili Type A Chart



PRESIDENTE NICOLAU LOBATO INTERNATIONAL AERODROME - DILI**TYPE A OPERATING CHART - OBSTACLE DATA**

SURVEYED: P.FITZGERALD

DATE: APRIL 2012

SHEET 3 OF 3 SHEETS



Point ID	Dist from SOT	Offset (-ve is L, +ve is R)	WGS84 Zone 51		MSL Elev (m)	MSL Elev (ft)	Description
			Easting	Northing			
0808	1856.5	74.1	778838.0	9054502.6	11.2	37	Perimeter Fence
0801	1877.6	-93.5	778822.4	9054670.9	23.6	77	Tree
0802	1920.8	-95.1	778864.3	9054681.8	28.0	92	Tree
0803	1926.1	-73.7	778874.1	9054662.0	24.5	80	Tree
0807	1987.5	89.0	778969.2	9054516.4	24.3	80	Tree
0804	2013.5	-70.1	778960.3	9054677.4	25.2	83	Tree
0805	2254.9	-136.2	779181.8	9054794.2	35.9	118	Tree
0806	2294.9	-76.6	779233.8	9054744.6	28.5	93	Tree
0809	2411.7	-118.1	779338.9	9054810.4	35.1	115	Tree
6413	2942.5	-87.1	779864.2	9054894.8	32.3	106	Tree
6415	2947.0	17.9	779891.2	9054793.2	33.5	110	Tree
6414	3026.5	-97.8	779943.9	9054923.5	23.5	77	Tree
6416	3092.2	48.7	780039.8	9054794.5	28.5	94	Tree
6417	3216.4	117.0	780175.9	9054754.7	33.5	110	Tree
6418	3307.0	159.6	780273.6	9054732.6	33.7	111	Tree
6407	10564.4	-743.2	787168.3	9057183.6	123.2	404	Cristo Rei Statue
6408	10795.9	-213.1	787509.1	9056715.7	160.0	525	Tree
6412	11180.3	477.9	788034.0	9056123.7	109.7	360	Tree
6411	11334.0	348.9	788156.3	9056282.9	195.9	643	Tree
6410	11369.5	256.8	788171.1	9056380.6	199.3	654	Tree
6409	11393.1	-42.6	788129.4	9056678.2	190.0	623	Terrain
6422	11535.3	816.0	788453.9	9055870.2	178.3	585	Tree
6419	11728.1	754.9	788629.1	9055971.5	243.5	799	Tree
6420	11738.6	900.0	788670.7	9055832.0	308.4	1012	Tree
6421	11758.6	830.2	788675.2	9055904.5	251.1	824	Tree
2601	1851.7	43.8	776997.3	9054216.1	8.5	28	Perimeter Fence
2602	1887.2	27.9	776966.0	9054192.9	8.5	28	Perimeter Fence
2604	1947.2	-40.9	776922.3	9054112.7	7.8	26	Sign
2603	2008.7	-85.8	776871.9	9054055.5	10.2	34	Tree
6000	5274.7	-495.5	773769.9	9052949.2	159.9	525	Comms Tower
6403	13491.2	-367.7	765716.3	9051298.1	216.8	711	Tree
6404	14122.2	-900.1	765215.0	9050641.7	355.7	1167	Tree
6405	14636.8	-596.2	764646.7	9050827.3	307.3	1008	Tree
6402	14646.4	-516.4	764620.1	9050903.2	285.8	938	Tree
6400	14730.3	-8.1	764428.2	9051381.5	241.0	791	Comms Tower

INTENTIONALLY BLANK

5 WPFL-LOSPALOS FUILORO**Name:** Lospalos Fuiloro

- a. ICAO Code: WPFL
- b. Airport Authority: ANATL
 - i. +670 78579932
 - ii. +670 78579284
 - iii. PPR

ARP: 082651S 1265916E**Elevation:** 1350'**Runways:**

- a. RWY 02/20
- b. Length: 750m
- c. Grass

Declared Distances: Not available**Airport Lighting:** NIL**Air Traffic Control:** NIL**Navigation Aids:** NIL**ARFFS:** NIL**Fuel:** NIL**Local Traffic Regulations:**

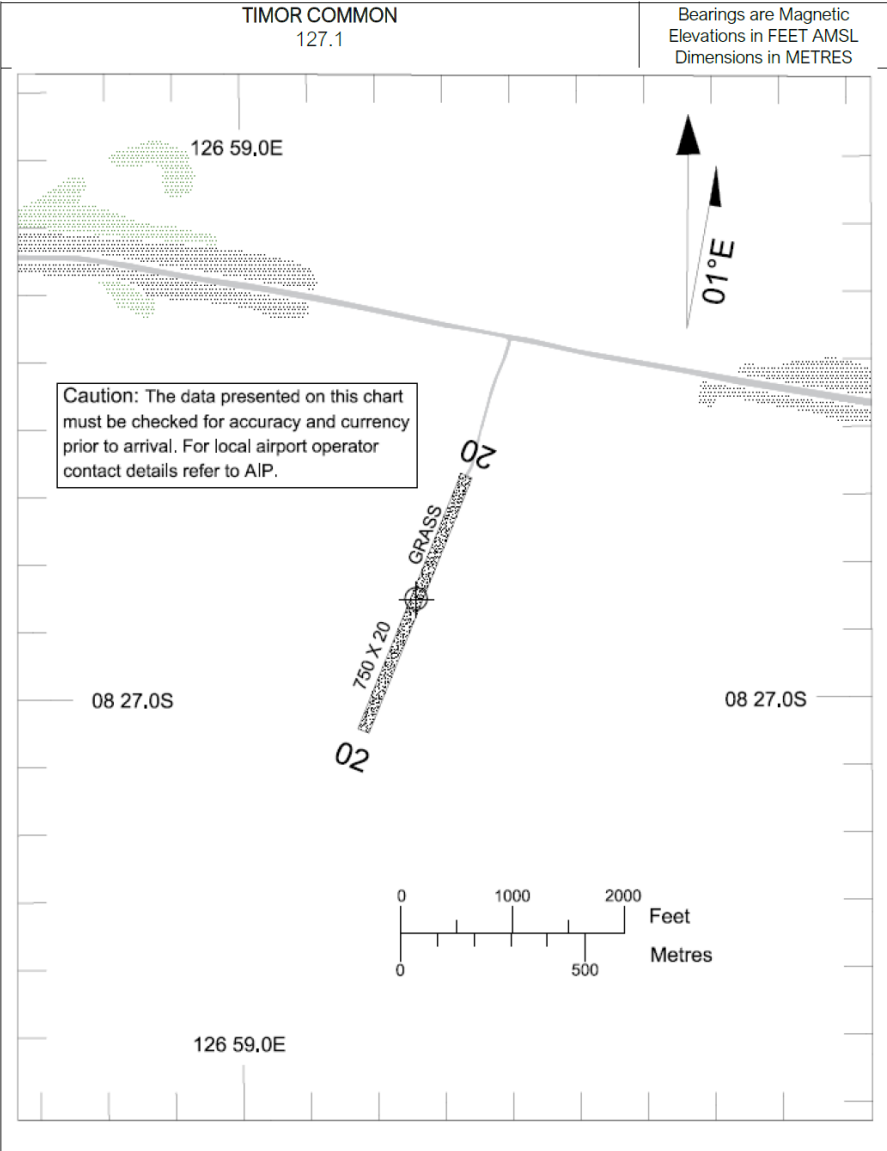
- a. Traffic shall use Timor Common Freq 127.10MHz
- b. Airport available HJ only
- c. VFR traffic only

5.1 Lospalos Fuiloro Aerodrome Chart

AERODROME
CHART AD 2-5

AD ELEV 1350
08 26 51S 126 59 16E

LOSPALOS FUILORO (WPFL)
TIMOR-LESTE



AERODROME
CHART AD 2-5AD ELEV 1350
08 26 51S 126 59 16ELOSPALOS FUILORO (WPFL)
TIMOR-LESTE

TIMOR COMMON 127.1			Bearings are Magnetic Elevations in FEET AMSL Dimensions in METRES
RWY	DIRECTION		
02	021°		
20	201°		
NOTES			
ANIMAL HAZARDS EXIST. VEHICLES USE RWY AS A ROADWAY. RWY CONDITION DETERIORATES AFTER HEAVY RAIN. AIRPORT AVAILABLE HJ ONLY. VFR TRAFFIC ONLY.			

25MAR21

INTENTIONALLY BLANK

6 WPMN-MALIANA**Name:** Maliana

- a. ICAO Code: WPMN
- b. IATA Code: MPT
- c. Airport Authority: ANATL
 - i. +670 78579932
 - ii. +670 78579284
 - iii. PPR

ARP: 085820S 1251254E**Elevation:** 700'**Runways:**

- a. RWY 11/29
- b. Length: 860m
- c. Gravel/Grass

Declared Distances: Not available**Airport Lighting:** NIL**Air Traffic Control:** NIL**Navigation Aids:** NIL**ARFFS:** NIL**Fuel:** NIL**Local Traffic Regulations:**

- a. Traffic shall use Timor Common Freq
127.10MHz
- b. Airport available HJ only
- c. VFR traffic only

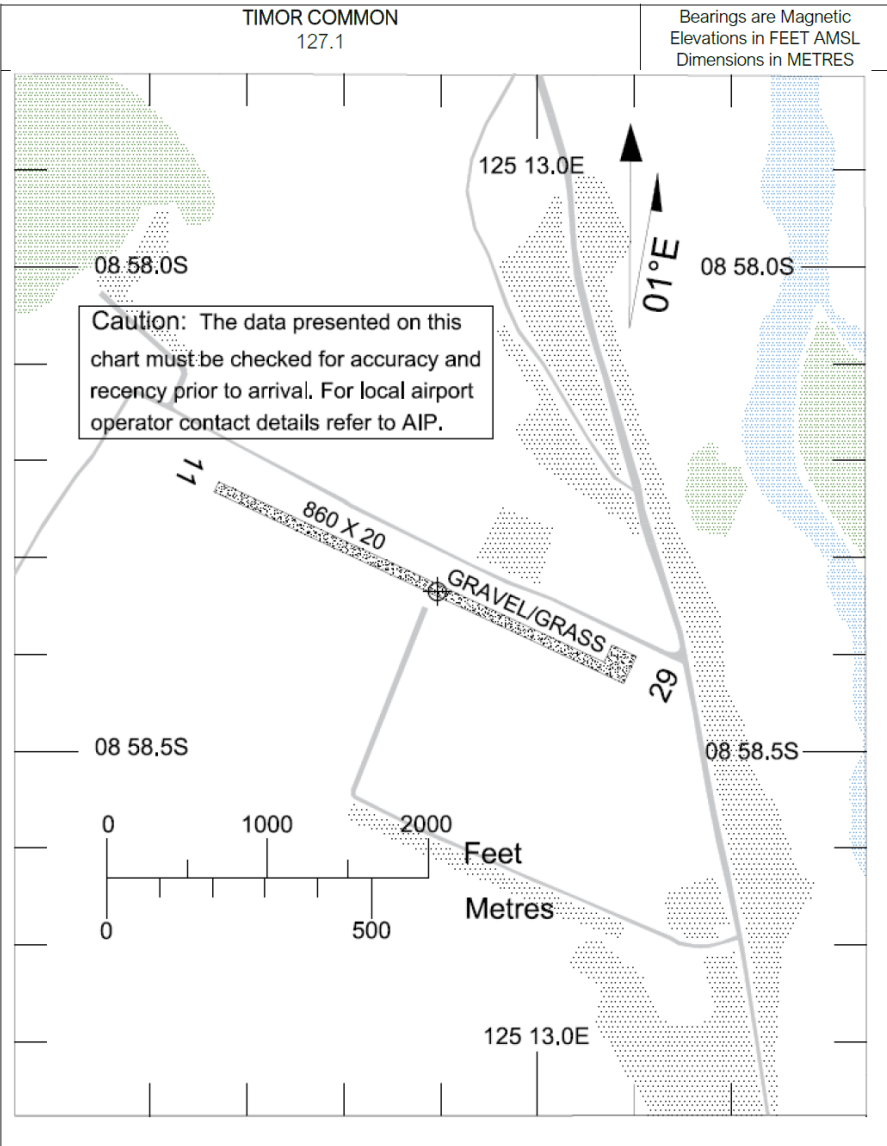
6.1 Maliana Aerodrome Chart

AERODROME
CHART AD 2-6

AD ELEV 700
8 58 20S 125 12 54E
TIMOR COMMON
127.1

MALIANA (WPMN)
TIMOR-LESTE

Bearings are Magnetic
Elevations in FEET AMSL
Dimensions in METRES



25MAR21

AERODROME
CHART AD 2-6

AD ELEV 700
8 58 20S 125 12 54E

MALIANA (WPMN)
TIMOR-LESTE

TIMOR COMMON 127.1		Bearings are Magnetic Elevations in FEET AMSL Dimensions in METRES
RWY	DIRECTION	
11	114°	
29	294°	

NOTES

ANIMAL HAZARDS EXIST.
AIRPORT AVAILABLE HJ ONLY
VFR TRAFFIC ONLY

25MAR21

INTENTIONALLY BLANK

7 WPOC-OECUSSI

Name: Rota Do Sandalo International Airport Oecussi

- a. ICAO Code: WPOC
- b. IATA Code: OEC
- c. Airport Authority: President Da RAEOA/ZEESM
- d. Flight Approvals: AACTL
 - i. +670 78579932
 - ii. +670 78579284
 - iii. PPR-7 business days

ARP: 091154.05S 1242020.49E

Elevation: 15'

Runways:

- a. Asphalt flexible pavement PCN: 120/F/A/W/T
- b. THR 27 Co-Ordinates 091152.27S 1242053.18E
 - i. Elevation: 14'
- c. THR 09 Co-Ordinates 091156.16S 1241941.24E
 - i. Elevation: 14'
- d. RWY Bearing: 266/086°M
- e. Length: 2200m
- f. Width: 45m
- g. Shoulders: 7.5m (asphalt)
- h. RWS: 2440x300m
 - i. Note: Last 75m of RWS are flyover not graded
- i. RESA 27/09: 90x90m (compacted gravel)
- j. CWY 27/09: 300m

Declared Distances:

- a. TORA: 27/09 2200m
- b. TODA: 27/09: 2410m

- c. ASDA: 27/09; 2260m
- d. LDA: 27/09: 2200m

Turning Pads:

- a. Turning nodes approved for Code E with max wheelbase of 25.6m

Taxiways:

- a. Asphalt flexible pavement PCN: 120/F/A/W/T
- b. TWY A width: 23m
- c. TWY B width: 23m
- d. TWY Shoulders: 10.5m (asphalt)

Apron Information:

- a. Rigid concrete, 138x250m
- b. Flexural strength 615.25psi/4.242MPa

Parking Stands:

- a. Remote stands 1A/1B for turboprop aircraft
- b. Stands 2/3 aerobridges for Code C aircraft
- c. Remote stands 4A/B nose in for Code C aircraft
- d. Remote stand 4 nose in for Code E aircraft

Airport Lighting:

- a. SALS
- b. HIRL
- c. RTIL
- d. PAPI
- e. Turn Pads CTR line insets
- f. Taxiway A, B and Apron Taxi Lane
- g. ABN GW

Air Traffic Control:

- a. Primary Freq 122.30MHz

- b. Secondary Freq 133.60 MHz
- c. ATIS 126.80MHz
- d. NOTE: ATC services currently not manned

Navigation Aids:

- a. DVOR/DME: 113.60 MHz/CH83X
- b. 091149.89S 1241950.22E
- c. DVOR unusable as follows:
 - i. Radial 090 CCW 250 beyond 40NM below A030
 - ii. Radial 250 CCW 220 beyond 40NM below A100
 - iii. Radial 220 CCW 190 beyond 40NM below F140
 - iv. Radial 190 CCW 150 beyond 40NM below F130
 - v. Radial 150 CCW 090 beyond 40NM below F150

Standby Power

- a. Available max switchover time 15 seconds
- b. UPS for critical systems max 30 min

ARFFS:

- a. Category 7 provided including ambulance
- b. Pante Macassar City Fire Fighting Station information:
 - i. Contact Number: +670 2530039
 - ii. Person in Charge: Fidelio da Cunha (+670 75833234)
 - iii. Distance: 5 km from Airport
 - iv. Vehicle Operation: 1 vehicle
 - v. Capacity: 5000 ltrs /water
 - vi. Consist of (3 shift operation): 21 personnel

c. Pante Macassar Regional Hospital information:

- i. Contact Number: +670 2530027
- ii. Person in Charge: (+670 78526100) Manuel da Cunha
- iii. Distance: 6 km from Airport
- iv. Max available beds: 48

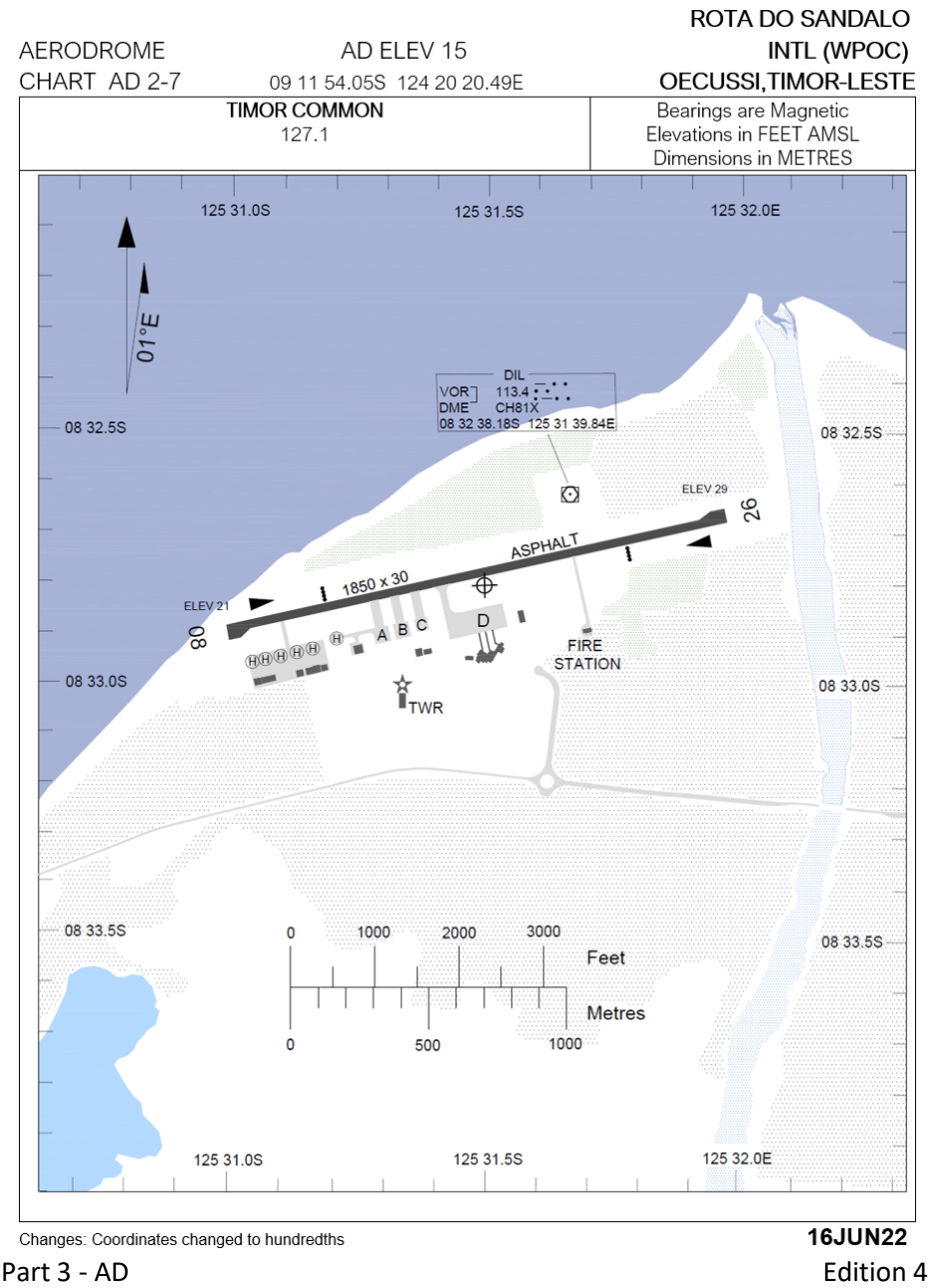
Fuel:

- a. Jet Fuel not available
- b. AVGAS not available

Local Traffic Regulations:

- a. Traffic shall use Timor Common Freq 127.10MHz
- b. Airport available HJ only
- c. VFR traffic only
- d. RWY 27 left hand traffic pattern only
- e. RWY 09 right hand traffic pattern only

7.1 Oecussi Aerodrome Chart



AERODROME
CHART AD 2-7

AD ELEV 15
09 11 54.05S 124 20 20.49E

INTL (WPOC)
OECUSSI,TIMOR-LESTE

TIMOR COMMON 127.1				Bearings are Magnetic Elevations in FEET AMSL Dimensions in METRES	
RWY	DIRECTION	THR	RWS	BEARING STRENGTH	
09	086°	09 11 56.16S 124 19 41.24E	2320 X 300	PCN 120/F/A/W/T	
27	266°	09 11 52.27S 124 20 53.18E			
RWY	AERODROME LIGHTING				
09	SALS HIRL RTIL PAPI LEFT SIDE 3°		TWY B ABN GW		
27	SALS HIRL RTIL PAPI LEFT SIDE 3°				
NOTES					
AIRPORT AVAILABLE HJ ONLY					

Changes: Coordinates changed to hundredths

8 WPSM-SAME**Name:** Same

- a. ICAO Code: WPSM
- b. Airport Authority: ANATL
- v. +670 78579932
- vi. +670 78579284
- vii. PPR

ARP: 090002S 1254102E**Elevation:** 1100'**Runways:**

- a. RWY 18/36
- b. Length: 820m
- c. Grass

Declared Distances: Not available**Airport Lighting:** NIL**Air Traffic Control:** NIL**Navigation Aids:** NIL**ARFFS:** NIL**Fuel:** NIL**Local Traffic Regulations:**

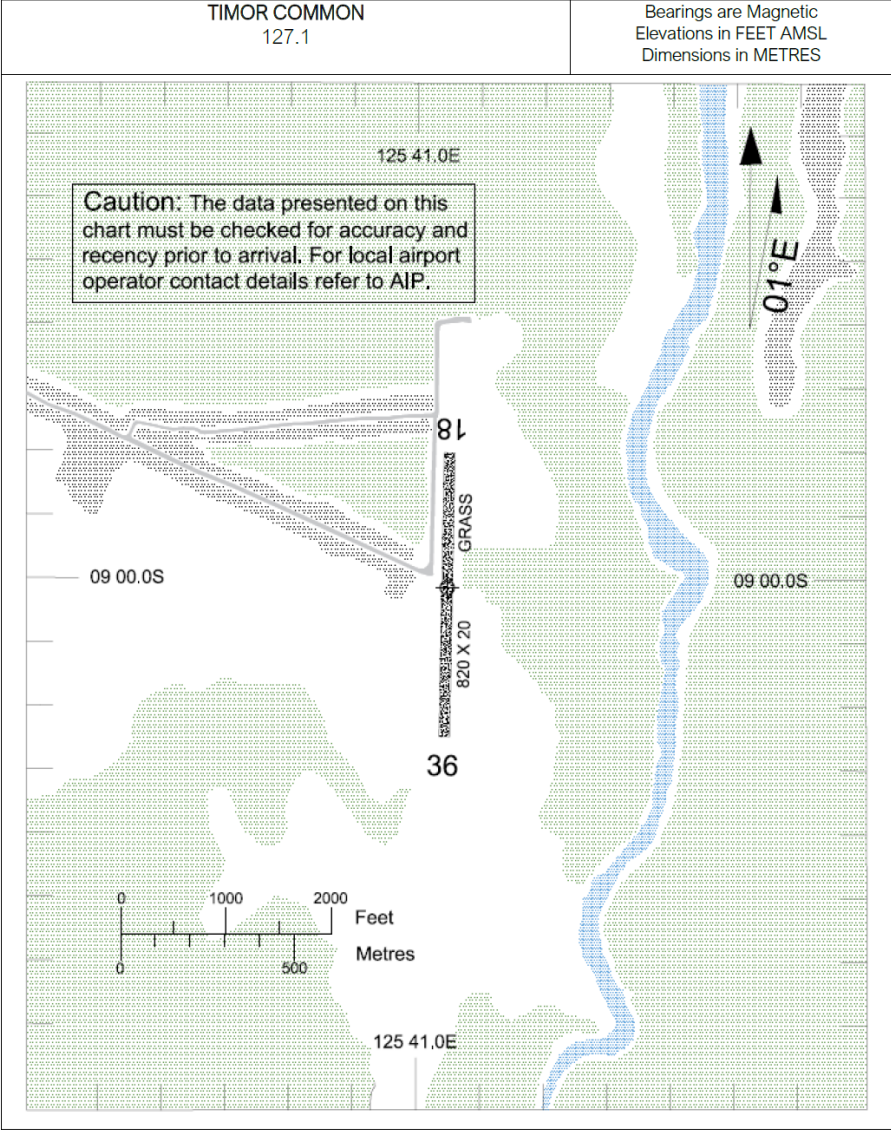
- a. Traffic shall use Timor Common Freq
127.10MHz
- b. Airport available HJ only
- c. VFR traffic only

8.1 Same Aerodrome Chart

AERODROME
CHART AD 2-8

AD ELEV 1100
09 00 02S 125 41 02E

SAME (WPSM)
TIMOR-LESTE



25MAR21

AERODROME
CHART AD 2-8AD ELEV 1100
09 00 02S 125 41 02ESAME (WPSM)
TIMOR-LESTE

TIMOR COMMON 127.1		Bearings are Magnetic Elevations in FEET AMSL Dimensions in METRES
RWY	DIRECTION	
18	180°	
36	360°	
<div>NOTES</div> <div>ANIMAL HAZARDS EXIST. AIRPORT AVAILABLE HJ ONLY VFR TRAFFIC ONLY</div>		

25MAR21

INTENTIONALLY BLANK

9 WPDB-SUAI

Name: Xanana Gusmao International Airport Suai

- a. ICAO Code: WPDB
- b. IATA Code: UAI
- c. Airport Authority: ANATL
- d. Flight Approvals: ANATL
 - i. +670 78579932
 - ii. +670 78579284
 - iii. PPR-7 business days

ARP: 091742.68S 1251705.66E

Elevation: 120'

Runways:

- a. Asphalt
 - i. PCN: 20/F/C/Y/T
- b. THR 35 Co-Ordinates 091826.49S 1251715.54E
 - i. Elevation: 57'
- c. THR 17 Co-Ordinates 091738.87S 1251704.80E
 - i. Elevation: 119'
- d. RWY Bearing: 166°/346°M
- e. Length: 1500m
- f. Width: 30m
- g. Shoulders: NIL
- h. RWS: 1620x150m
- i. RESA: 90x60m
- j. CWY: NIL

Declared Distances:

- a. TORA: 17 1500m
- b. TODA: 17 1500m
- c. ASDA: 17 1500m

ARFFS:

- a. Category 5
- b. DLY 2200-0500

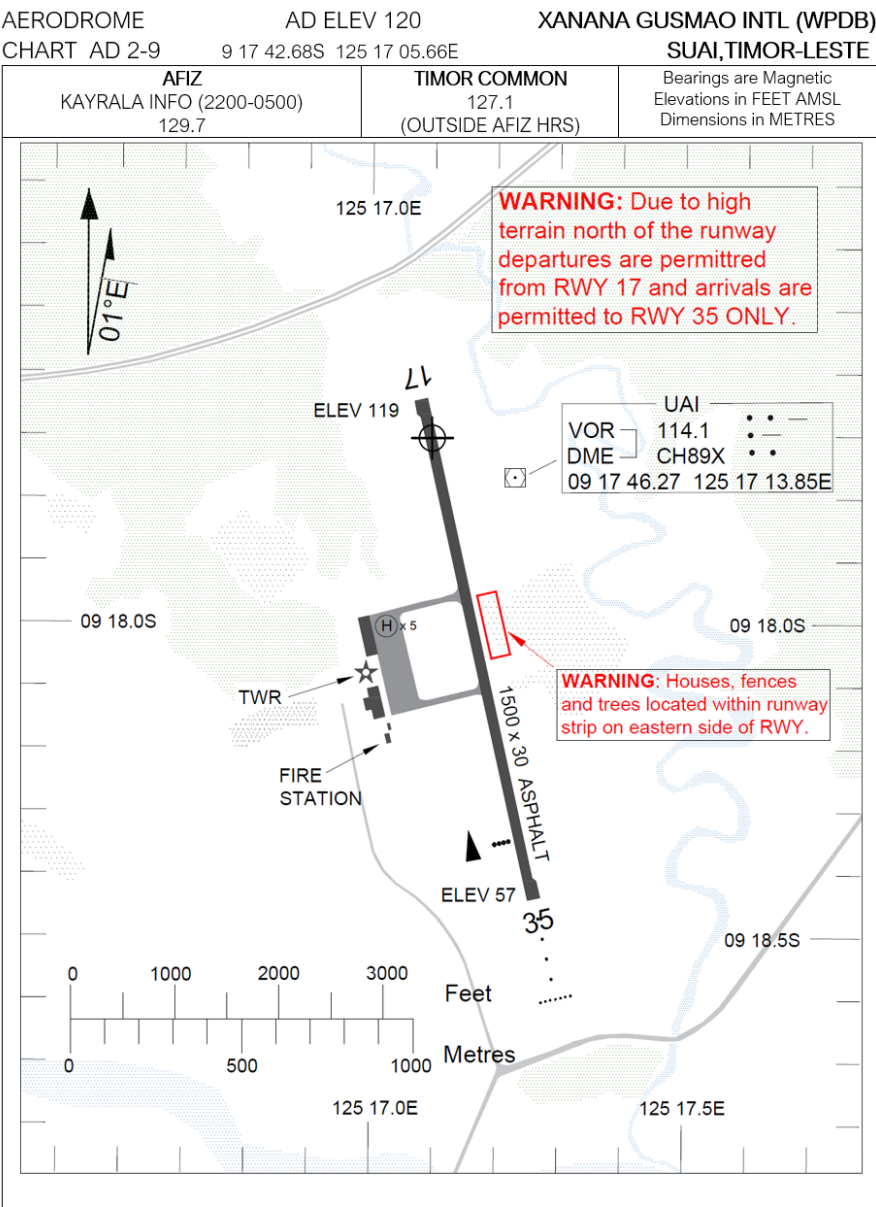
Fuel:

- a. Jet Fuel not available
- b. AVGAS not available

Local Traffic Regulations:

- a. Traffic shall use Timor Common Freq 127.10MHz outside AFIZ hours
- b. Airport available HJ only
- c. VFR traffic only
- d. Except for approved GNSS approach operators
- e. Departures RWY 17 only
- f. Arrivals RWY 35 only

9.1 Suai Aerodrome Chart



Changes: Coordinates changed to hundredths

16JUN22

AERODROME

AD ELEV 120

XANANA GUSMAO INTL (WPDB)

CHART AD 2-9

09 17 42.68S 125 17 05.66E

SUAI, TIMOR-LESTE

AFIZ KAYRALA INFO (2200-0500) 129.7			TIMOR COMMON 127.1 (OUTSIDE AFIZ HRS)	Bearings are Magnetic Elevations in FEET AMSL Dimensions in METRES
RWY	DIRECTION	THR	RWS	BEARING STRENGTH
17	166°	09 17 38.87S 125 17 04.80E	1620 X 150	PCN 20/F/C/Y/T
35	346°	09 18 26.49S 125 17 15.54E		
RWY	AERODROME LIGHTING			
17	MIRL		TWY ABN	
35	SALS MIRL PAPI LEFT SIDE 3°			
NOTES				
PILOTS MUST OVERFLY AD TO OBSERVE PRIOR TO MAKING AN APPROACH IF NOT IN COMMS WITH AFIZ AIRPORT AVAILABLE HJ ONLY				

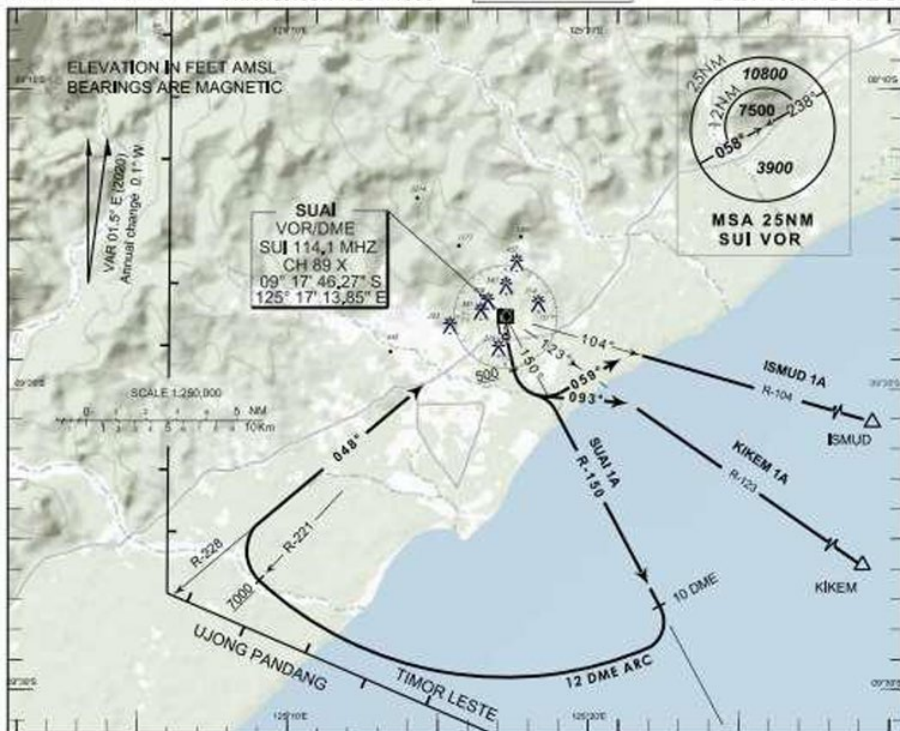
9.2 Suai RWY 17 Departures Chart

**INSTRUMENT
DEPARTURE
CHART - ICAO**

**AD ELEV 120 FT
THR RWY 17 ELEV 119 FT
TRANSITION ALT 11000**

**TWR / SMC
129.7 MHZ**

**SUAI / (WPDB)
RWY 17
DEPARTURES**



DEPARTURE ROUTE DESCRIPTION

SUAI 1A : After Take-off passing 500FT, Turn Left Intercept SUI VOR/DME R-150 at 10 DME SUI Turn Right Join 12 DME Arc. On Crossing R-221 SUI VOR Turn Right Track Inbound Via R-228 to SUI VOR/DME. PDG 4.5% until reaching 11000FT.

KIKEM 1A : After Take-off passing 500FT, Turn Left 093° Intercept R-123 SUI VOR Outbound to KIKEM

ISMUD 1A : After Take-off passing 500FT, Turn Left 059° Intercept R-104 SUI VOR Outbound to ISMUD

DATE OF AERONAUTICAL INFORMATION

TIMOR LESTE

JAN 2018

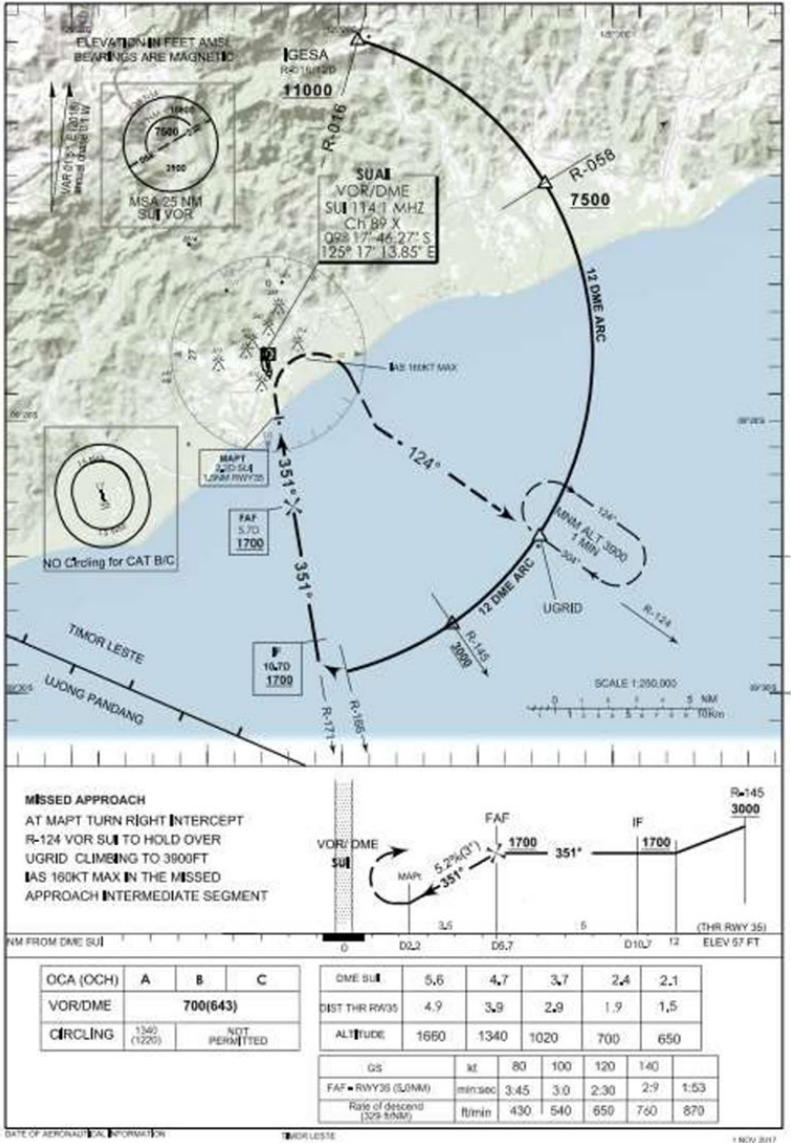
9.3 Suai RWY 35 VOR/DME Chart

**INSTRUMENT
APPROACH
CHART - ICAO**

AD ELEV 120 FT
THR RWY 35 ELEV 57 FT
TRANSITION ALT 11000

TWR / SMC
129,7 MHZ

**SUAI / (WPDB)
RWY 35
VOR/DME (12 DME ARC)**



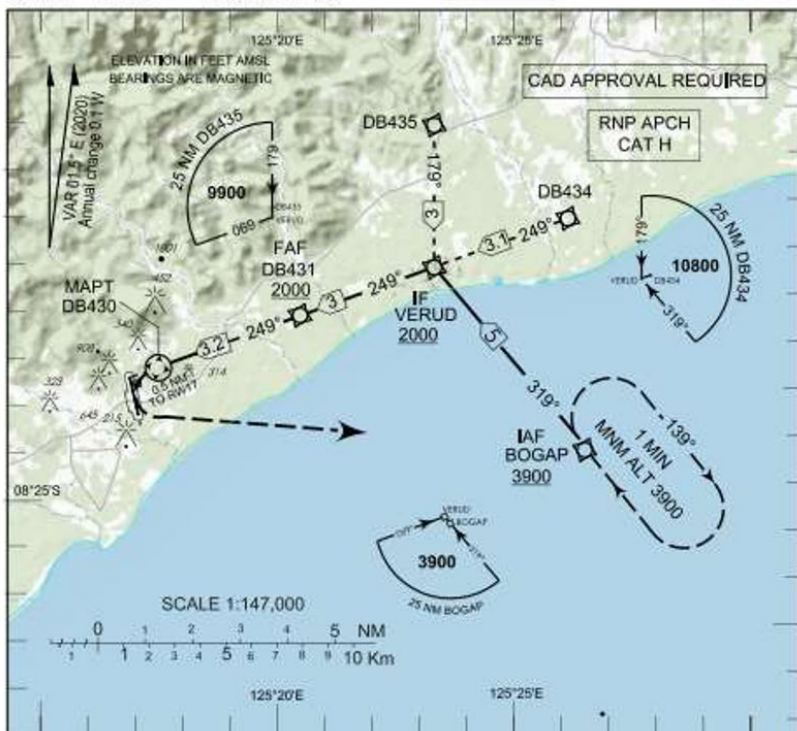
9.5 Suai RNP 249 Chart

INSTRUMENT
APPROACH
CHART - ICAO

AD ELEV 120 FT
THR RWY 17 ELEV 119 FT
TRANSITION ALT 11000

TWR / SMC
129.7 MHZ

SUAI (WPDB)
RNP 249

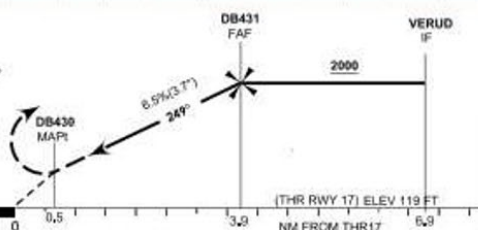


MISSED APPROACH

TURN LEFT TRACK DIRECT BOGAP
CLIMBING 3900 FT

PROCEED VISUALLY

249° / 0.5 NM
VSDA 8.3°



OCA (OCH)	CAT H
LNAV	730(611)

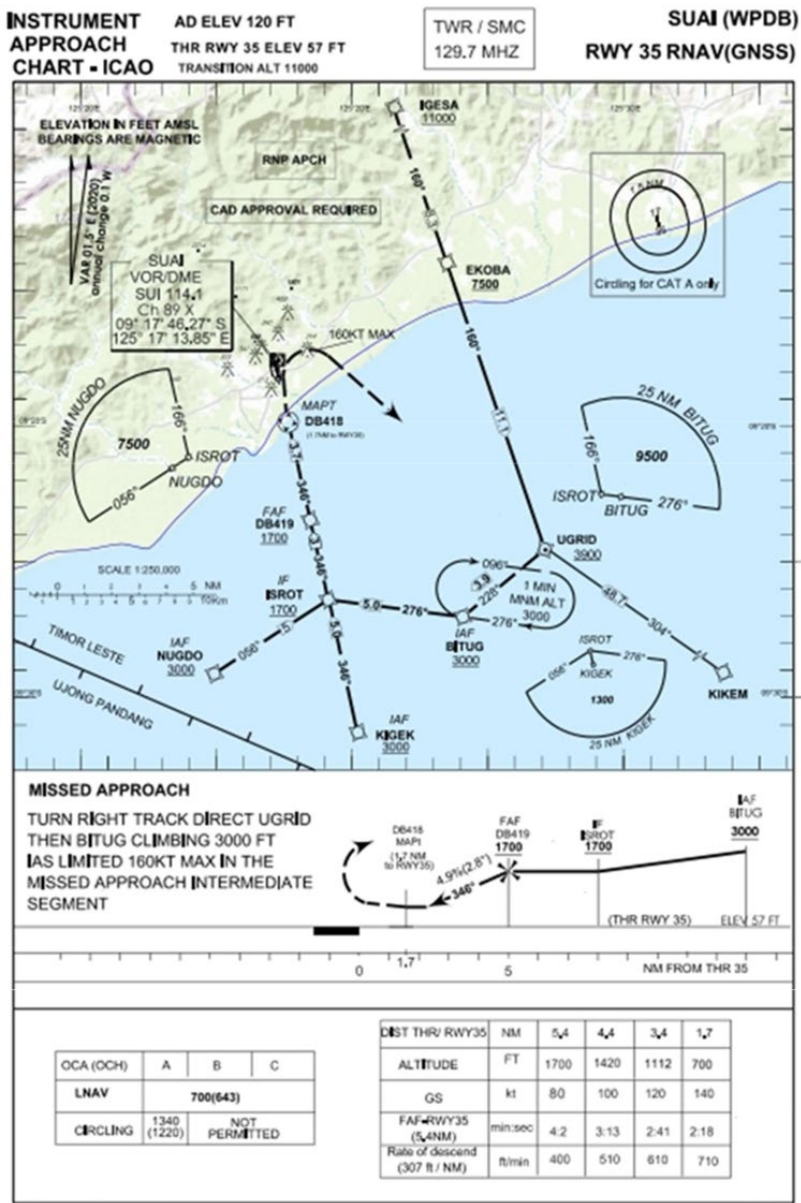
Ground Speed	kt	80	100	120	140
Rate of descent FAF-MAP1 8.5%(3.7°)	ft/min	2.24	1:55	1:36	1:22

DATE OF AERONAUTICAL INFORMATION

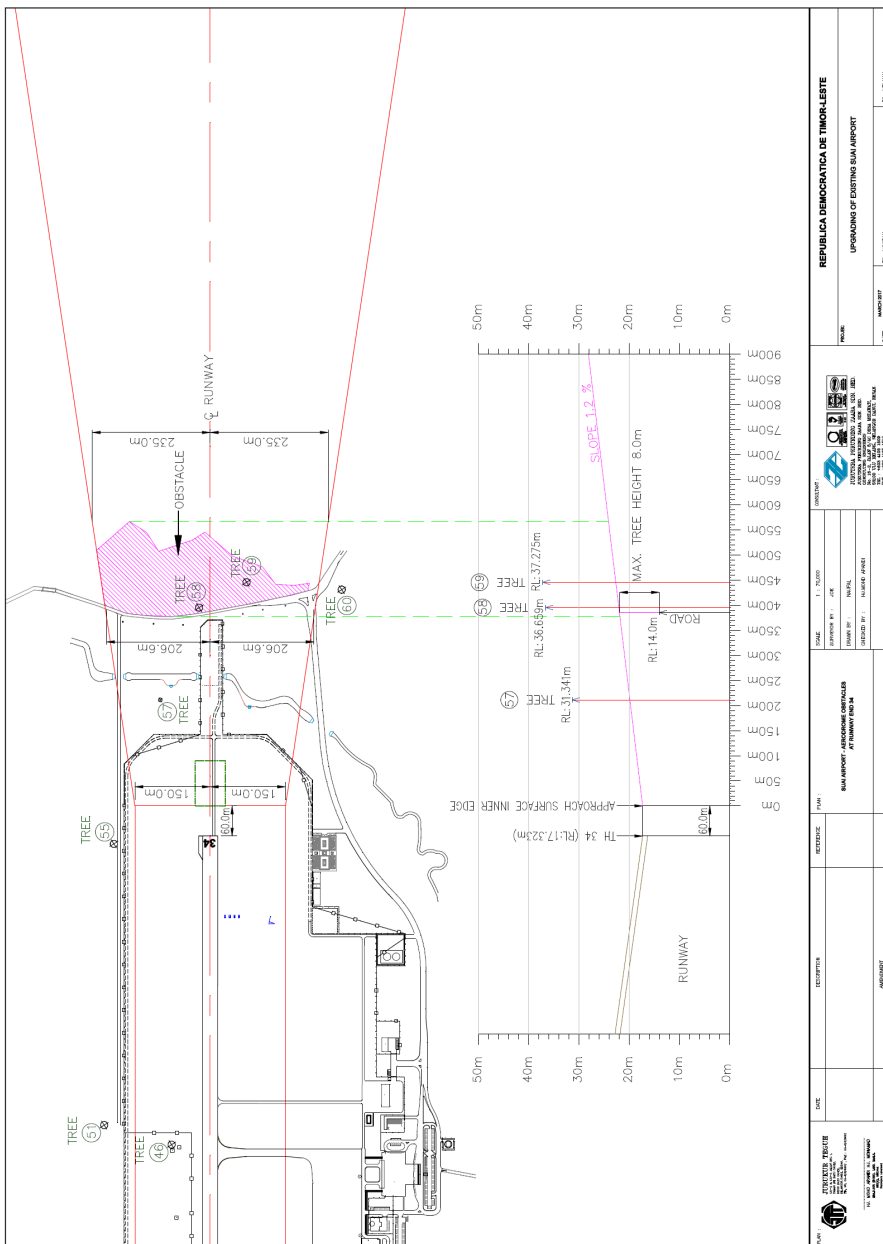
TIMOR LESTE

JAN 2018

9.6 Suai RWY 35 RNAV (GNSS) Chart



9.7 Suai Type A Chart



INTENTIONALLY BLANK

10 WPVQ-VIQUEQUE**Name:** Viqueque

- a. ICAO Code: WPVQ
- b. Airport Authority: ANATL
 - i. +670 78579932
 - ii. +670 78579284
 - iii. PPR

ARP: 085300S 1262223E**Elevation:** 100'**Runways:**

- a. RWY 15/33
- b. Length: 960m
- c. Gravel

Declared Distances: Not available**Airport Lighting:** NIL**Air Traffic Control:** NIL**Navigation Aids:** NIL**ARFFS:** NIL**Fuel:** NIL**Local Traffic Regulations:**

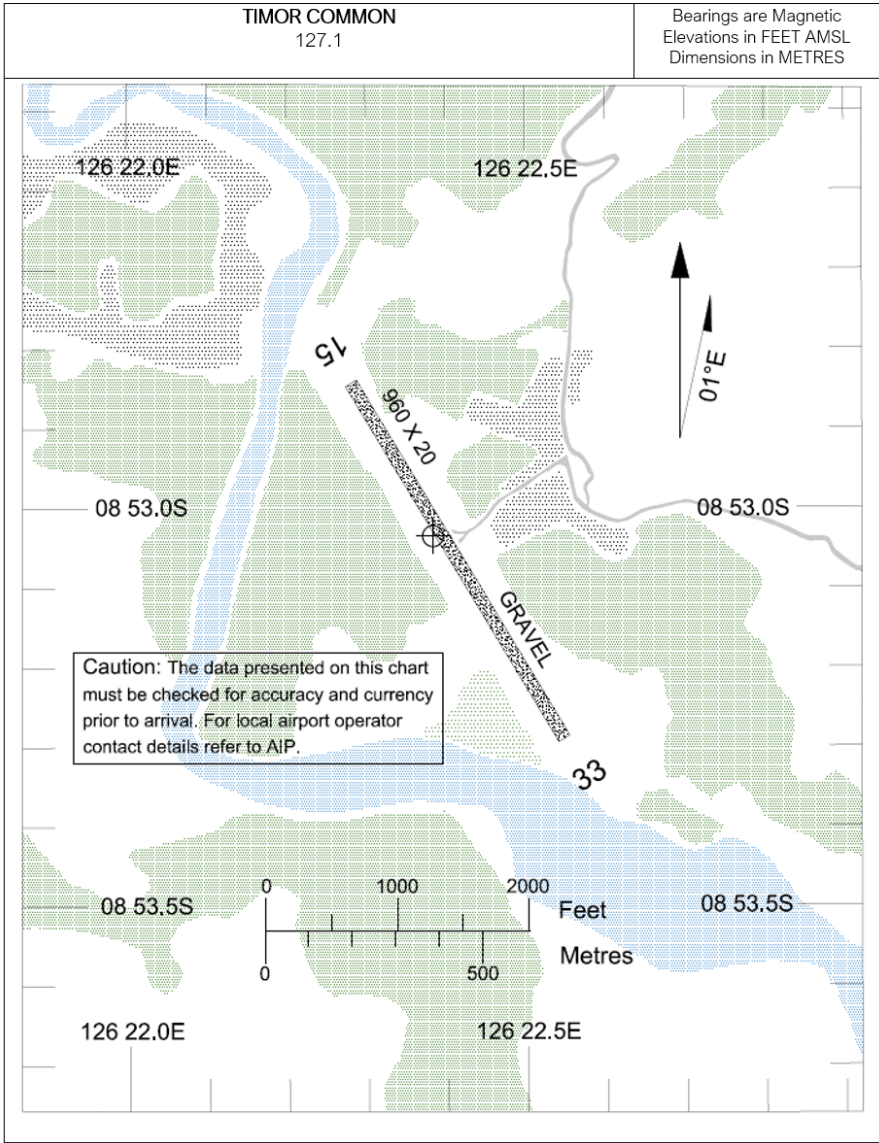
- a. Traffic shall use Timor Common Freq 127.10MHz
- b. Airport available HJ only
- c. VFR traffic only
- d. RWY 15 right hand traffic pattern only
- e. RWY 33 left hand traffic pattern only
- f. RWY 15 THR displaced 250m due obstacles, not marked

10.1 Viqueque Aerodrome Chart

AERODROME
CHART AD 2-10

AD ELEV 100
08 53 00S 126 22 23E

VIQUEQUE (WPVQ)
TIMOR-LESTE



AERODROME

AD ELEV 100

VIQUEQUE (WPVQ)

CHART AD 2-10

08 53 00S 126 22 23E

TIMOR-LESTE

TIMOR COMMON 127.1		Bearings are Magnetic Elevations in FEET AMSL Dimensions in METRES
RWY	DIRECTION	
15	148°	
33	328°	
<div>NOTES</div> <div>ANIMAL HAZARDS EXIST. RWY CONDITION DETERIORATES AFTER HEAVY RAIN. AIRPORT AVAILABLE HJ ONLY. VFR TRAFFIC ONLY.</div>		

25MAR21

INTENTIONALLY BLANK

AD 3

HELIPORTS

AD 3.1 HELIPORT LOCATION INDICATOR AND NAME

1 RESERVED

See [AD 1.3](#).

INTENTIONALLY BLANK